



VCP-510^{Q&As}

VMware Certified Professional on VSphere 5

Pass VMware VCP-510 Exam with 100% Guarantee

Free Download Real Questions & Answers **PDF** and **VCE** file from:

<https://www.geekcert.com/vcp-510.html>

100% Passing Guarantee
100% Money Back Assurance

Following Questions and Answers are all new published by VMware
Official Exam Center

-  **Instant Download** After Purchase
-  **100% Money Back** Guarantee
-  **365 Days** Free Update
-  **800,000+** Satisfied Customers





QUESTION 1

You are running into disk contention problems on a VMFS datastore. Which two actions will resolve this problem? (Choose two.)

- A. Adjust disk shares for all virtual machines accessing this datastore from the same ESXi host
- B. Move some of the virtual machines from this VMFS datastore to another datastore on a different LUN
- C. Adjust disk shares for each ESXi host accessing this datastore.
- D. Move some of the virtual machines from this VMFS datastore to another datastore on the same LUN.

Correct Answer: AB

QUESTION 2

An administrator is responsible for enabling file access for desktop users. Many users have complained that they cannot access their files. An alert in the vSphere Client states that the storage connectivity alarm for all hosts has been triggered. The storage screen indicates that everything is connected, but the triggered alert has not been acknowledged. Which action will correct the user access problem?

- A. Rescan the storage on the file-sharing virtual machine on which the users are seeing the problem.
- B. Reconnect the storage containing the user files to all hosts in the cluster, then Refresh datastores on all hosts in the cluster.
- C. Tell each user to reboot their computer.
- D. Reconnect the storage containing the user files to all hosts in the cluster, then Rescan datastores on all hosts in the cluster.

Correct Answer: D

QUESTION 3

Which two events will result in a vSphere 5.x host running a virtual machine that contains an older virtual hardware version? (Choose two)

- A. a virtual machine is created on a vSphere 5.x host and virtual for the VM are created on a VMFS3 datastore.
- B. a virtual machine was migrated from a vSphere 4.x host.
- C. a virtual machine is created on a vSphere 5.x host with a with a vmxnet network adapter.
- D. a virtual machine is created on a vSphere 5.x host and attached to an existing virtual disk created with vSphere 4.x

Correct Answer: BD



QUESTION 4

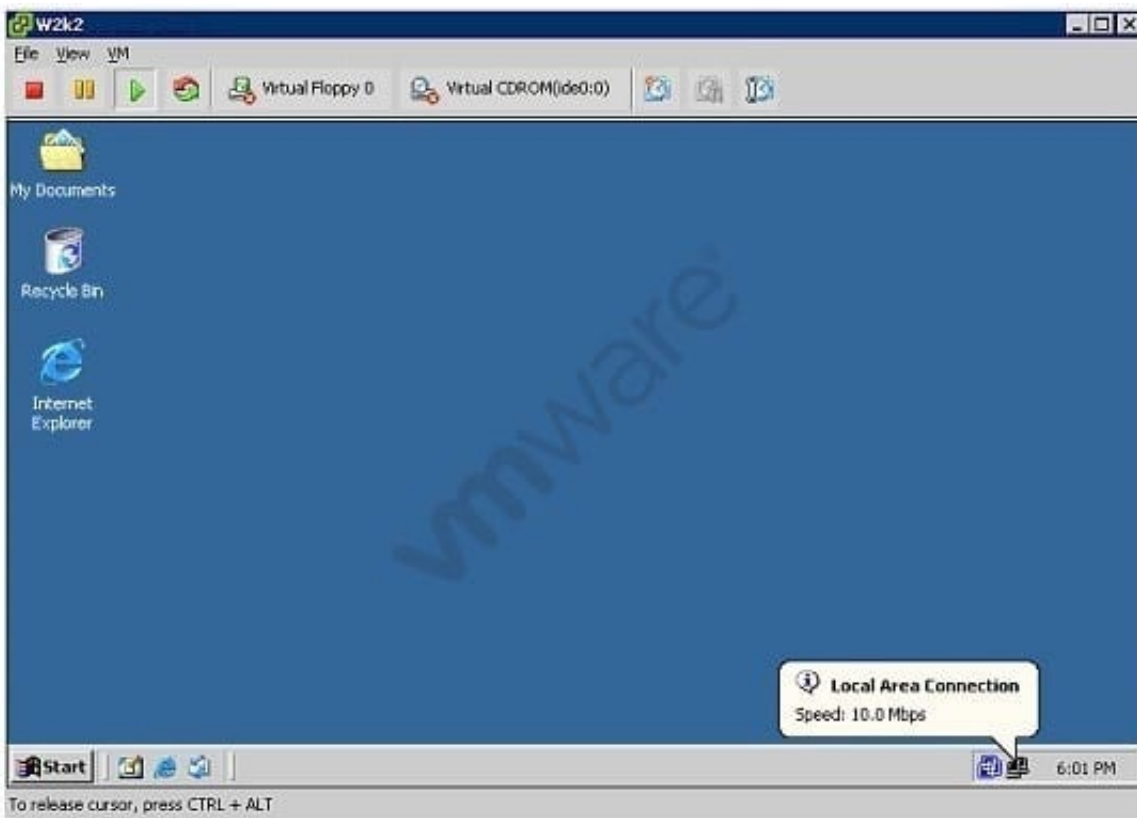
What is an accurate statement about vSphere Fault Tolerant secondary virtual machines?

- A. Cannot be stored on an NFS datastore
- B. Created on the same host as the primary
- C. Can prevent other virtual machines from powering up.
- D. Can be used for load balancing

Correct Answer: C

QUESTION 5

Click the Exhibit button. Which statement is true about the network performance of the virtual machine in the exhibit?



- A. The virtual machine can send at the maximum of 10Mbps.
- B. The virtual machine can send traffic as fast as the underlying virtual switch allows.
- C. Virtual switch autonegotiation settings must to be adjusted to improve performance.
- D. The underlying physical NIC is configured for 10Mbps.

Correct Answer: B



VCE & PDF

GeekCert.com

<https://www.geekcert.com/vcp-510.html>

2024 Latest geekcert VCP-510 PDF and VCE dumps Download

[VCP-510 PDF Dumps](#)

[VCP-510 Practice Test](#)

[VCP-510 Study Guide](#)