



VCP-550^{Q&As}

VMware Certified Professional - Data Center Virtualization

Pass VMware VCP-550 Exam with 100% Guarantee

Free Download Real Questions & Answers **PDF** and **VCE** file from:

<https://www.geekcert.com/vcp-550.html>

100% Passing Guarantee
100% Money Back Assurance

Following Questions and Answers are all new published by VMware
Official Exam Center

- ⚙️ **Instant Download** After Purchase
- ⚙️ **100% Money Back** Guarantee
- ⚙️ **365 Days** Free Update
- ⚙️ **800,000+** Satisfied Customers





QUESTION 1

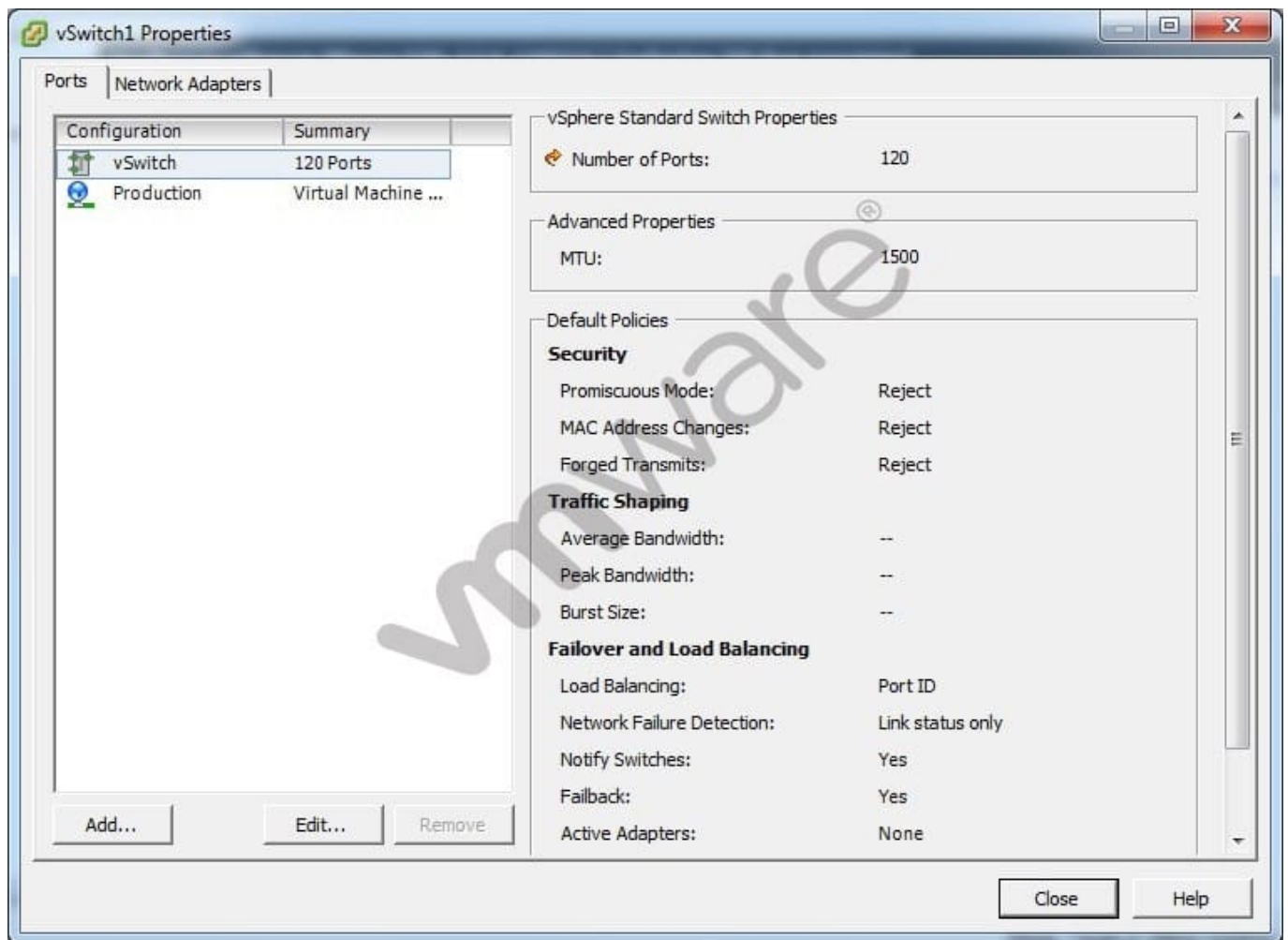
What two requirements must be met to create a fully automated Distributed Resource Scheduler (DRS) cluster? (Choose two.)

- A. Shared storage
- B. Hosts with identical processor features
- C. Storage vMotion
- D. vMotion

Correct Answer: AD

QUESTION 2

A security audit has revealed that a virtual machine on vSwitch1 is receiving all traffic sent to the virtual switch, violating corporate policy. The vSphere administrator examines the properties for vSwitch1, as shown in the exhibit: -- Exhibit -



-- Exhibit -Which configuration explains why the virtual machine is receiving all traffic sent to vSwitch1?

- A. The Production port group has the Promiscuous Mode policy set to Accept.
- B. vSwitch1 has the Promiscuous Mode policy set to Reject.
- C. The Network Failure Detection policy on the Production port group is set to Link Status plus Beaconsing.
- D. The Network Failure Detection policy on vSwitch1 is set to Link Status only.

Correct Answer: A

QUESTION 3

Which two features are different between VDP and VDPA? (Choose two.)

- A. Support for guest level backups of SQL and Exchange
- B. Ability to perform file level recovery



- C. Virtual machines supported per appliance
- D. Support for image level backups

Correct Answer: AC

QUESTION 4

An administrator needs to establish that a database server is entitled to twice the CPU resources than a web server during CPU resource contention. Which settings should the administrator change to accomplish this?

- A. Set the database server's CPU Shares to High and leave the web server's CPU Shares at Normal.
- B. Set the database server's CPU Shares to High and change the web server's CPU Shares to Low.
- C. Set the database server's Shares to High and change the web server's CPU Shares value to a custom value of 500.
- D. Set the database server's Shares to a Custom value of 500 and leave the web server's CPU Shares at Normal.

Correct Answer: A

QUESTION 5

-- Exhibit -

localhost.localdomain VMware ESXi, 5.5.0, 1106514 | Evaluation (60 days remaining)

Getting Started Summary Virtual Machines Resource Allocation Performance Configuration Local Users & Groups Events Permissions

Hardware

- Health Status
- Processors
- Memory
- Storage
- Networking
- Storage Adapters
- Network Adapters
- Advanced Settings
- Power Management

Processors

General

Model	Intel(R) Core(TM) i7-3740QM CPU @ 2.70GHz
Processor Speed	2.7 GHz
Processor Sockets	2
Processor Cores per Socket	1
Logical Processors	2
Hyperthreading	N/A

-- Exhibit -Which two statements below could explain why the vSphere Client is reporting N/A for hyperthreading? (Choose two.)

The physical CPUs in the host do not support hyperthreading.

- A. Hyperthreading is disabled in the host's BIOS.
- B. The physical CPUs in the host are not multi-core.
- C. The number of CPUs meets or exceeds the maximum without hyperthreading.



VCE & PDF

GeekCert.com

<https://www.geekcert.com/vcp-550.html>

2024 Latest geekcert VCP-550 PDF and VCE dumps Download

Correct Answer: AB

[VCP-550 Study Guide](#)

[VCP-550 Exam Questions](#)

[VCP-550 Braindumps](#)