



VCP550^{Q&As}

VMware Certified Professional - Data Center Virtualization

Pass VMware VCP550 Exam with 100% Guarantee

Free Download Real Questions & Answers **PDF** and **VCE** file from:

<https://www.geekcert.com/vcp550.html>

100% Passing Guarantee
100% Money Back Assurance

Following Questions and Answers are all new published by VMware
Official Exam Center

- ⚙️ **Instant Download** After Purchase
- ⚙️ **100% Money Back** Guarantee
- ⚙️ **365 Days** Free Update
- ⚙️ **800,000+** Satisfied Customers





QUESTION 1

Immediately after installing ESXi, an administrator observes that the Configure Lockdown Mode option is grayed out in the Direct Console User Interface (DCUI). What is the most likely explanation?

- A. The host has not yet been added to a vCenter Server.
- B. The BIOS on the host does not have NX/XD enabled.
- C. The ESXi host is running in evaluation mode.
- D. The host requires a reboot before this feature is available.

Correct Answer: A

QUESTION 2

Which condition will cause a HA/DRS cluster to display a yellow health indicator?

- A. There are insufficient resources to satisfy the cluster's requirements.
- B. A virtual machine has failed and cannot be restarted in the cluster.
- C. Virtual machine I/O activity in the cluster has reached or exceeded a critical level.
- D. One or more hosts in the cluster has entered maintenance mode.

Correct Answer: A

QUESTION 3

An administrator needs to create an alarm to monitor when a specific ESXi host in an HA/DRS cluster becomes disconnected from other vSphere components like HA agents or the vCenter server. Which process must the administrator use to accomplish this?

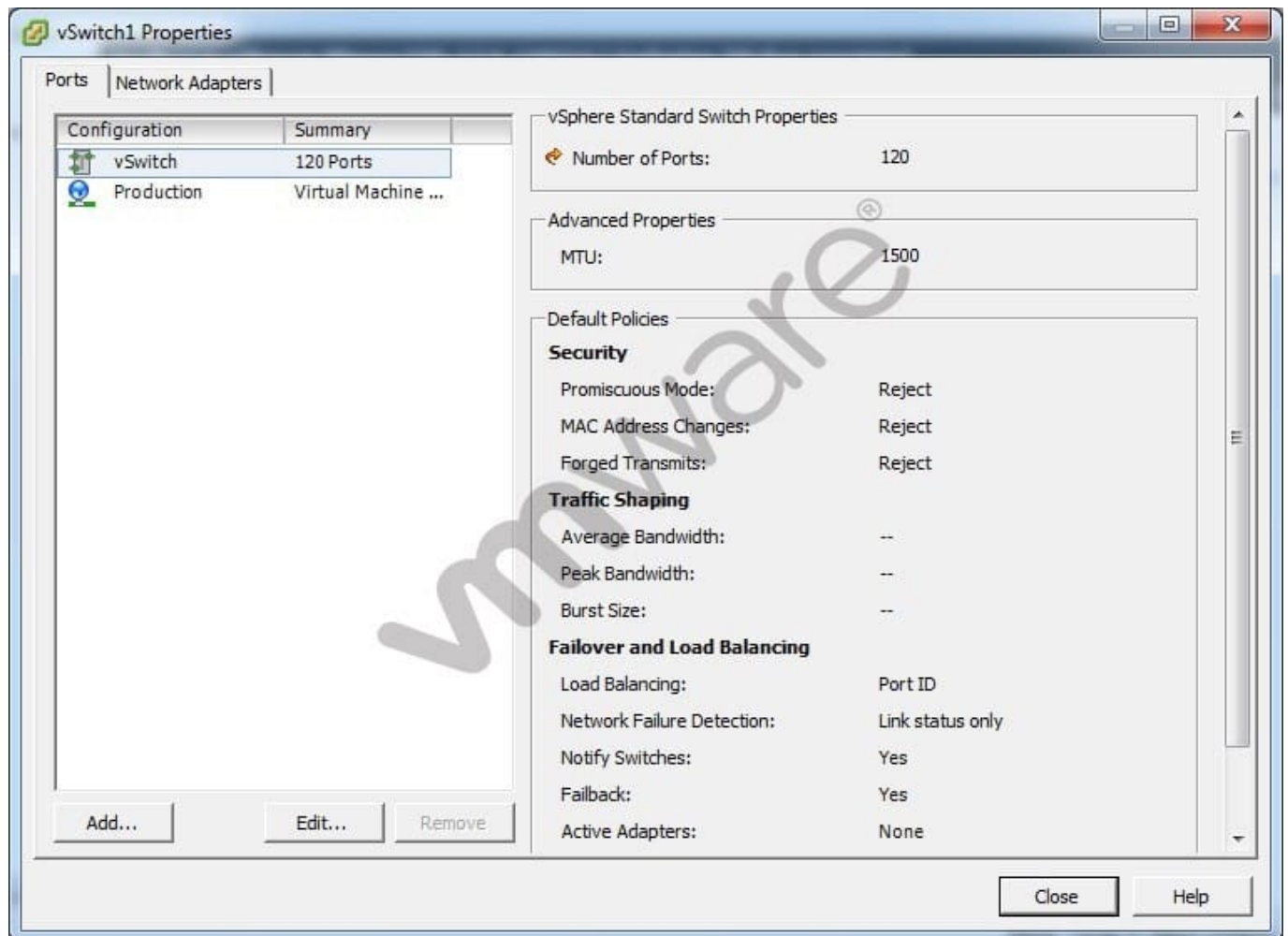
- A. Define a Host type alarm, monitor for the event Cannot connect host, and supply a conditional trigger on Host name equal to a specific label.
- B. Define a Cluster type alarm, monitor for the event Cannot connect host, and supply a conditional trigger on Host name equal to a specific label.
- C. Define a Cluster type alarm, monitor for the event Host status changed, and supply a specific label for each host.
- D. Define a Host type alarm, monitor for the condition Host status changed, and supply a specific label for each host.

Correct Answer: A



QUESTION 4

A security audit has revealed that a virtual machine on vSwitch1 is receiving all traffic sent to the virtual switch, violating corporate policy. The vSphere administrator examines the properties for vSwitch1, as shown in the exhibit: -- Exhibit -



-- Exhibit -Which configuration explains why the virtual machine is receiving all traffic sent to vSwitch1?

- A. The Production port group has the Promiscuous Mode policy set to Accept.
- B. vSwitch1 has the Promiscuous Mode policy set to Reject.
- C. The Network Failure Detection policy on the Production port group is set to Link Status plus Beaconing.
- D. The Network Failure Detection policy on vSwitch1 is set to Link Status only.

Correct Answer: A

QUESTION 5



An administrator needs to configure vFlash Read Cache to improve performance. What would benefit the most from enabling vFlash Read Cache?

- A. Virtual machines replicated with vSphere Replication
- B. Web Server virtual machines
- C. Database virtual machines
- D. Virtual machines migrated using Storage vMotion

Correct Answer: B

[VCP550 PDF Dumps](#)

[VCP550 Practice Test](#)

[VCP550 Exam Questions](#)