



# ACLS<sup>Q&As</sup>

Advanced Cardiac Life Support

## Pass Test Prep ACLS Exam with 100% Guarantee

Free Download Real Questions & Answers **PDF** and **VCE** file from:

<https://www.geekcert.com/acls.html>

100% Passing Guarantee  
100% Money Back Assurance

Following Questions and Answers are all new published by Test Prep  
Official Exam Center

-  **Instant Download** After Purchase
-  **100% Money Back** Guarantee
-  **365 Days** Free Update
-  **800,000+** Satisfied Customers





### QUESTION 1

FILL BLANK

Identify the condition in which a patient's heat gained exceeds the patient's heat loss.

A. Hyperthermia

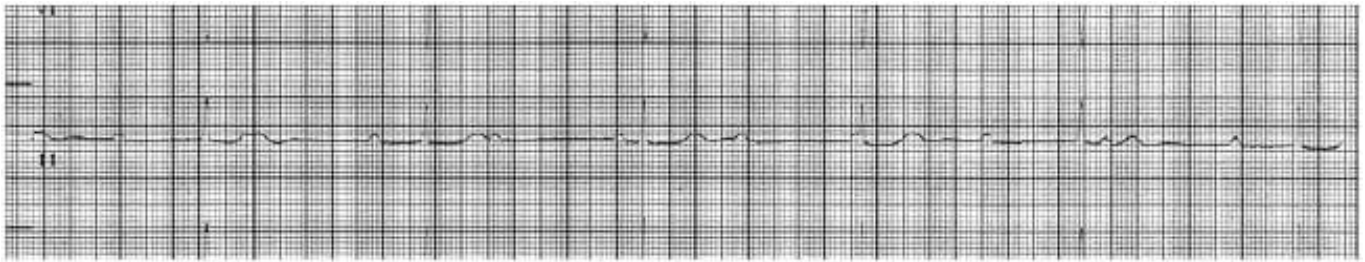
Correct Answer: A

---

### QUESTION 2

SIMULATION

A patient complains of nausea, weakness, and shortness of breath. The patient is cool and clammy. BP is 70/50, pulse is 30, respirations 28. The monitor shows the following rhythm. What is the order of treatment?



A. O<sub>2</sub>, atropine, external pacemaker, dopamine, epinephrine, transvenous pacemaker (The rhythm above is third-degree AV block.)

Correct Answer: A

---

### QUESTION 3

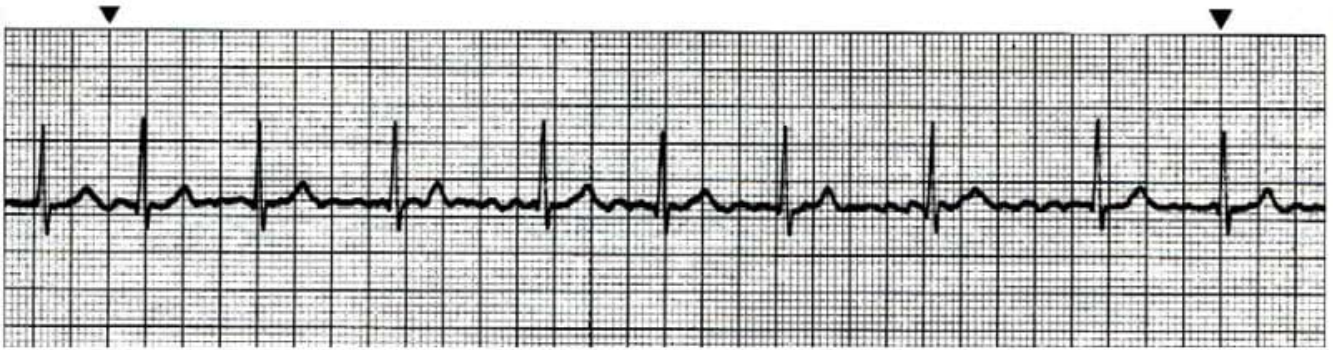
FILL BLANK

In manual adult defibrillation, how many pounds of pressure should be placed on each electric paddle?

Correct Answer: A

---

### QUESTION 4



A patient presents with the above rhythm complaining of an irregular heartbeat. She has no other complaints. Past medical history is significant for a myocardial infarction 7 years ago. Blood pressure is 110/70 mmHg. At this time you would

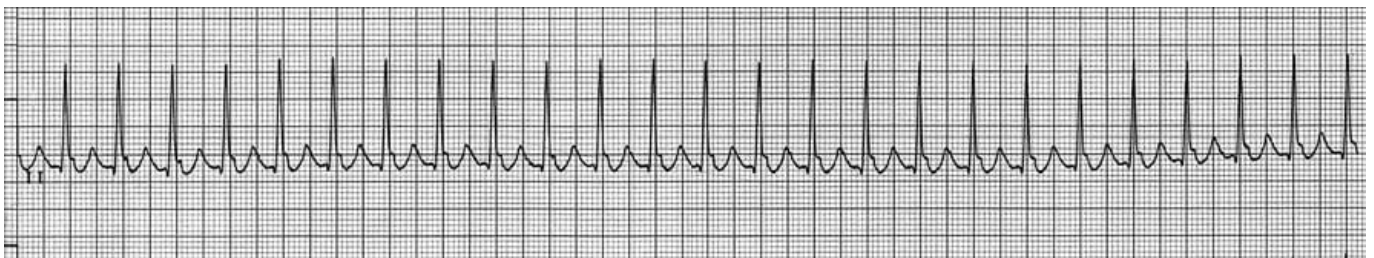
- A. Continue monitoring and seek expert consultation
- B. Administer nitroglycerin 0.4 mg sublingual or spray
- C. Perform emergency synchronized cardioversion
- D. Administer lidocaine 1 mg/kg IV E. Perform elective synchronized cardioversion with premedication

Correct Answer: A

## QUESTION 5

### SIMULATION

A patient in the CCU complains of sudden dizziness, nausea, vomiting, Difficulty breathing. Exam reveals rales throughout both lung fields, BP is 80/50, and respirations are 40/min. The monitor shows the following rhythm. Treatment?



A. IV access, O2, monitor, IV sedation followed by synchronized cardioversion at 100 J. (The rhythm above shows paroxysmal supraventricular tachycardia.)

Correct Answer: A