



AD0-E104^{Q&As}

Adobe Experience Manager Architect

Pass Adobe AD0-E104 Exam with 100% Guarantee

Free Download Real Questions & Answers **PDF** and **VCE** file from:

<https://www.geekcert.com/ad0-e104.html>

100% Passing Guarantee
100% Money Back Assurance

Following Questions and Answers are all new published by Adobe
Official Exam Center

-  **Instant Download** After Purchase
-  **100% Money Back** Guarantee
-  **365 Days** Free Update
-  **800,000+** Satisfied Customers





QUESTION 1

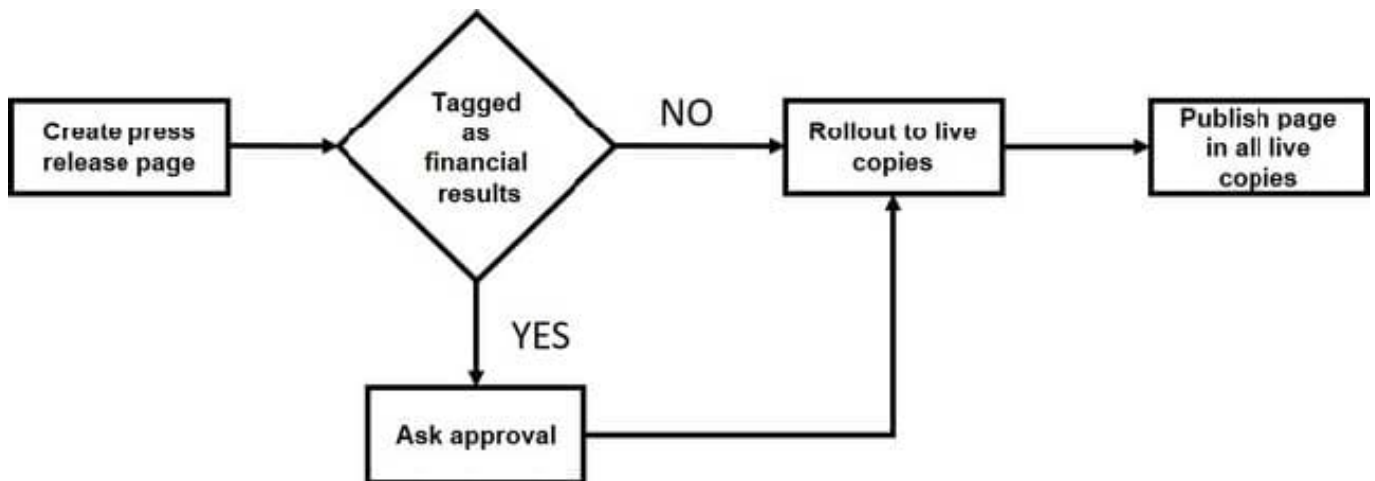
After Assets are loaded into the system during migration, what should be done to extract metadata and generate additional renditions?

- A. Run the Process Rendition workflow
- B. Modify the Update Asset Workflow to meet needs
- C. Activate the Assets
- D. Run the out-of-the-box Update Asset Workflow

Correct Answer: B

QUESTION 2

A customer to simplify and automate publishing press release pages and defines the following flow:



What should the Architect recommend?

- A. Configure MSM with the "Activate on Blueprint activation" option
- B. Create a custom workflow launches
- C. Advise the customer to use Launches
- D. Implement a Sling event listener that triggers on page creation

Correct Answer: B

QUESTION 3



Which deployment scenario should be used to achieve scalability for site visitor read access?

- A. Oak Cluster with MongoMK across Multiple DataCenter
- B. Single TarMK Instance
- C. TarMK Farm
- D. Oak Cluster with MongoMK in Single DataCenter

Correct Answer: B

QUESTION 4

A customer has 2TB of DAM assets on-premise.

Which deployment model should an Architect recommend to increase AEM server performance?

- A. File datastore with default serialization
- B. S3 datastore with binary less serialization
- C. File datastore with binary less serialization
- D. S3 datastore with default serialization

Correct Answer: B

QUESTION 5

What are two supported methods of querying the AEM data store? (Choose two.)

- A. noSQL Queries
- B. SQL1
- C. XPath
- D. QueryBuilder APIs
- E. JCR Query Traversal

Correct Answer: CD

Reference: <https://docs.adobe.com/content/help/en/experience-manager-64/deploying/practices/bestpractices-for-queries-and-indexing.html>