



AZ-102^{Q&As}

Microsoft Azure Administrator Certification Transition

Pass Microsoft AZ-102 Exam with 100% Guarantee

Free Download Real Questions & Answers **PDF** and **VCE** file from:

<https://www.geekcert.com/az-102.html>

100% Passing Guarantee
100% Money Back Assurance

Following Questions and Answers are all new published by Microsoft
Official Exam Center

-  **Instant Download** After Purchase
-  **100% Money Back** Guarantee
-  **365 Days** Free Update
-  **800,000+** Satisfied Customers





QUESTION 1

HOTSPOT

You have an Azure subscription named Subscription1.

You plan to deploy an Ubuntu Server virtual machine named VM1 to Subscription1.

You need to perform a custom deployment of the virtual machine. A specific trusted root certification authority (CA) must be added during the deployment.

What should you do? To answer, select the appropriate options in the answer area.

NOTE: Each correct selection is worth one point.

Hot Area:

Answer Area

File to create:

	▼
Answer.ini	
Autounattend.conf	
Cloud-init.txt	
Unattend.xml	

Tool to use to deploy the virtual machine:

	▼
The az vm create command	
The Azure portal	
The New-AzureRmVM cmdlet	

Correct Answer:



Answer Area

File to create:

▼

- Answer.ini
- Autounattend.conf
- Cloud-init.txt
- Unattend.xml**

Tool to use to deploy the virtual machine:

▼

- The az vm create command
- The Azure portal**
- The New-AzureRmVM cmdlet

Explanation:

Box 1: Unattend.xml

In preparation to deploy shielded VMs, you may need to create an operating system specialization answer file. On Windows, this is commonly known as the "unattend.xml" file. The New-ShieldingDataAnswerFile Windows PowerShell function

helps you do this. Starting with Windows Server version 1709, you can run certain Linux guest OSes in shielded VMs. If you are using the System Center Virtual Machine Manager Linux agent to specialize those VMs, the New-

ShieldingDataAnswerFile cmdlet can create compatible answer files for it.

Box 2: The Azure Portal

You can use the Azure portal to deploy a Linux virtual machine (VM) in Azure that runs Ubuntu.

References: <https://docs.microsoft.com/en-us/azure/virtual-machines/linux/quick-create-portal>

QUESTION 2

You have the Azure virtual networks shown in the following table.

Name	Address space	Subnet	Resource group Azure region
VNet1	10.11.0.0/16	10.11.0.0/17	West US
VNet2	10.11.0.0/17	10.11.0.0/25	West US
VNet3	10.10.0.0/22	10.10.1.0/24	East US
VNet4	192.168.16.0/22	192.168.16.0/24	North Europe

To which virtual networks can you establish a peering connection from VNet1?

- A. VNet2 and VNet3 only
- B. VNet2 only



- C. VNet3 and VNet4 only
- D. VNet2, VNet3, and VNet4

Correct Answer: C

The virtual networks you peer must have non-overlapping IP address spaces. The VNet1 and VNet2 address spaces overlap. The range of VNet2 is contained inside the range of VNet1.

References:

<https://docs.microsoft.com/en-us/azure/virtual-network/virtual-network-manage-peering#requirements-and-constraints>

QUESTION 3

You have an Azure tenant that contains two subscriptions named Subscription1 and Subscription2. In Subscription1, you deploy a virtual machine named Server1 that runs Windows Server 2016.

Server1 uses managed disks.

You need to move Server1 to Subscription2. The solution must minimize administration effort.

What should you do first?

- A. In Subscription2, create a copy of the virtual disk.
- B. From Azure PowerShell, run the Move-AzureRmResource cmdlet.
- C. Create a snapshot of the virtual disk.
- D. Create a new virtual machine in Subscription2.

Correct Answer: B

To move existing resources to another resource group or subscription, use the Move- AzureRmResource cmdlet.

References:

<https://docs.microsoft.com/en-in/azure/azure-resource-manager/resource-group-move-resources#moveresources>

QUESTION 4

HOTSPOT

Your network contains an Active Directory domain named adatum.com and an Azure Active Directory (Azure AD) tenant named adatum.onmicrosoft.com.

Adatum.com contains the user accounts in the following table.



Name	Member of
User1	Domain Admins
User2	Schema Admins
User3	Incoming Forest Trust Builders
User4	Replicator
User5	Enterprise Admins

Adatum.onmicrosoft.com contains the user accounts in the following table.

Name	Role
UserA	Global administrator
UserB	User administrator
UserC	Security administrator
UserD	Service administrator

You need to implement Azure AD Connect. The solution must follow the principle of least privilege.

Which user accounts should you use? To answer, select the appropriate options in the answer area.

NOTE: Each correct selection is worth one point.

Hot Area:

Answer Area

Adatum.com:

	▼
User1	
User2	
User3	
User4	
User5	

Adatum.onmicrosoft.com:

	▼
UserA	
UserB	
UserC	
UserD	

Correct Answer:



Answer Area

Adatum.com:

	▼
User1	
User2	
User3	
User4	
User5	

Adatum.onmicrosoft.com:

	▼
UserA	
UserB	
UserC	
UserD	

Explanation:

Box 1: User5

In Express settings, the installation wizard asks for the following:

AD DS Enterprise Administrator credentials

Azure AD Global Administrator credentials

The AD DS Enterprise Admin account is used to configure your on-premises Active Directory. These credentials are only used during the installation and are not used after the installation has completed. The Enterprise Admin, not the Domain

Admin should make sure the permissions in Active Directory can be set in all domains.

Box 2: UserA

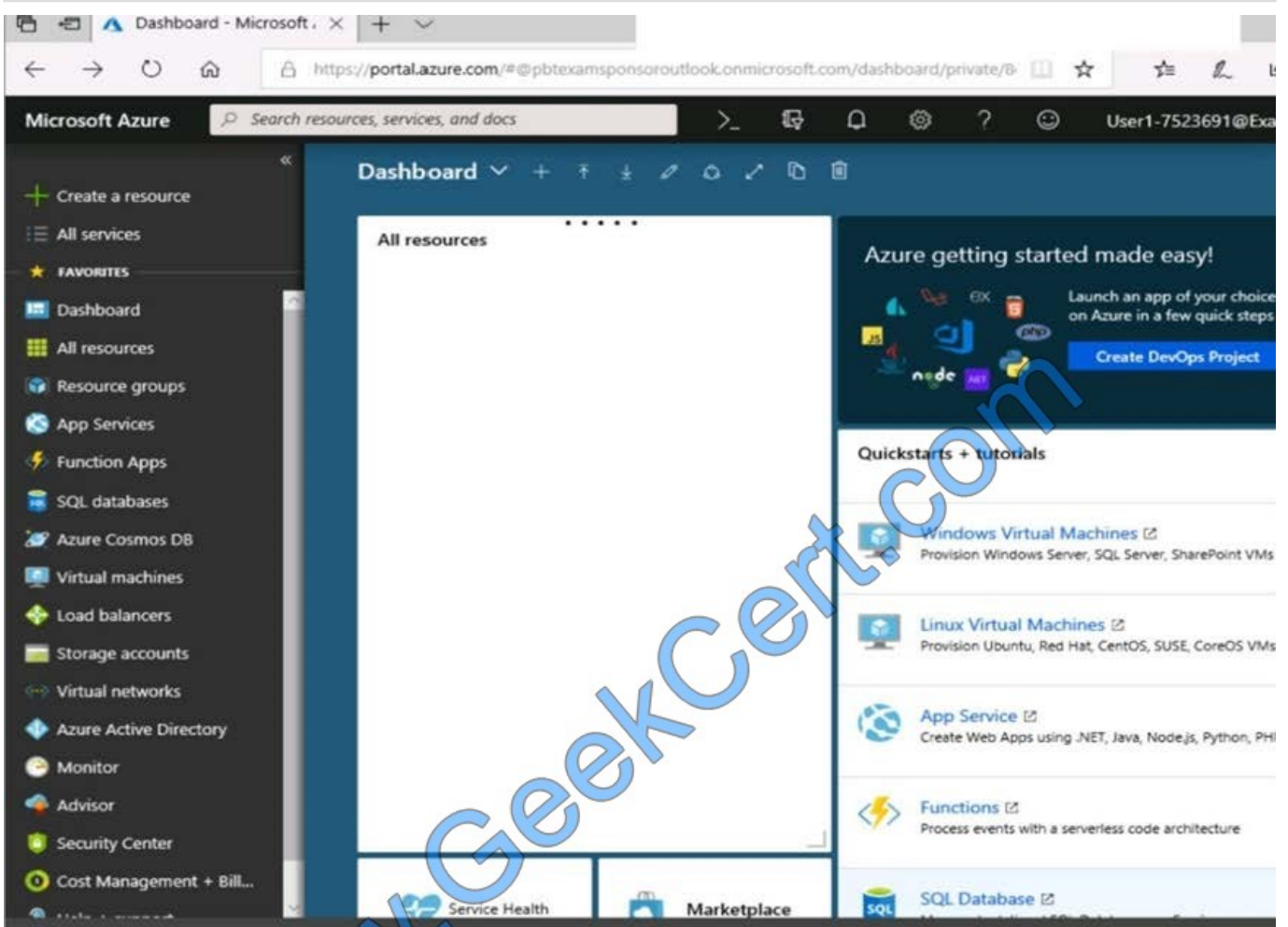
Azure AD Global Admin credentials are only used during the installation and are not used after the installation has completed. It is used to create the Azure AD Connector account used for synchronizing changes to Azure AD. The

account also enables sync as a feature in Azure AD.

References: <https://docs.microsoft.com/en-us/azure/active-directory/connect/active-directory-aadconnect-accounts-permissions>

QUESTION 5

SIMULATION Click to expand each objective. To connect to the Azure portal, type <https://portal.azure.com> in the browser address bar.



- Instructions
- Comments
- Controls Available
- Keyboard Shortcuts Available

Tasks

Click to expand each objective

- Configure servers
 - Add the "Print and Document Services" role to server LON-SVRT, installing any required management features and enabling both Print and LPD Services.
- + Configure file and share access

When you are finished performing all the tasks, click the "Next" button.

Note that you cannot return to the lab once you click the "Next" button. Scoring occurs in the background while you complete the rest of the exam.

Overview

The following section of the exam is a lab. In this section, you will perform a set of tasks in a live environment. While



most functionality will be available to you as it would be in a live environment, some functionality (e.g., copy and paste, ability to navigate to external websites) will not be possible by design. Scoring is based on the outcome of performing the tasks stated in the lab. In other words, it doesn't matter how you accomplish the task, if you successfully perform it, you will earn credit for that task.

Labs are not timed separately, and this exam may have more than one lab that you must complete. You can use as much time as you would like to complete each lab. But, you should manage your time appropriately to ensure that you are able to complete the lab(s) and all other sections of the exam in the time provided.

Please note that once you submit your work by clicking the Next button within a lab, you will NOT be able to return to the lab.

To start the lab

You may start the lab by clicking the Next button.

You plan to protect on-premises virtual machines and Azure virtual machines by using Azure Backup. You need to prepare the backup infrastructure in Azure. The solution must minimize the cost of storing the backups in Azure.

What should you do from the Azure portal?

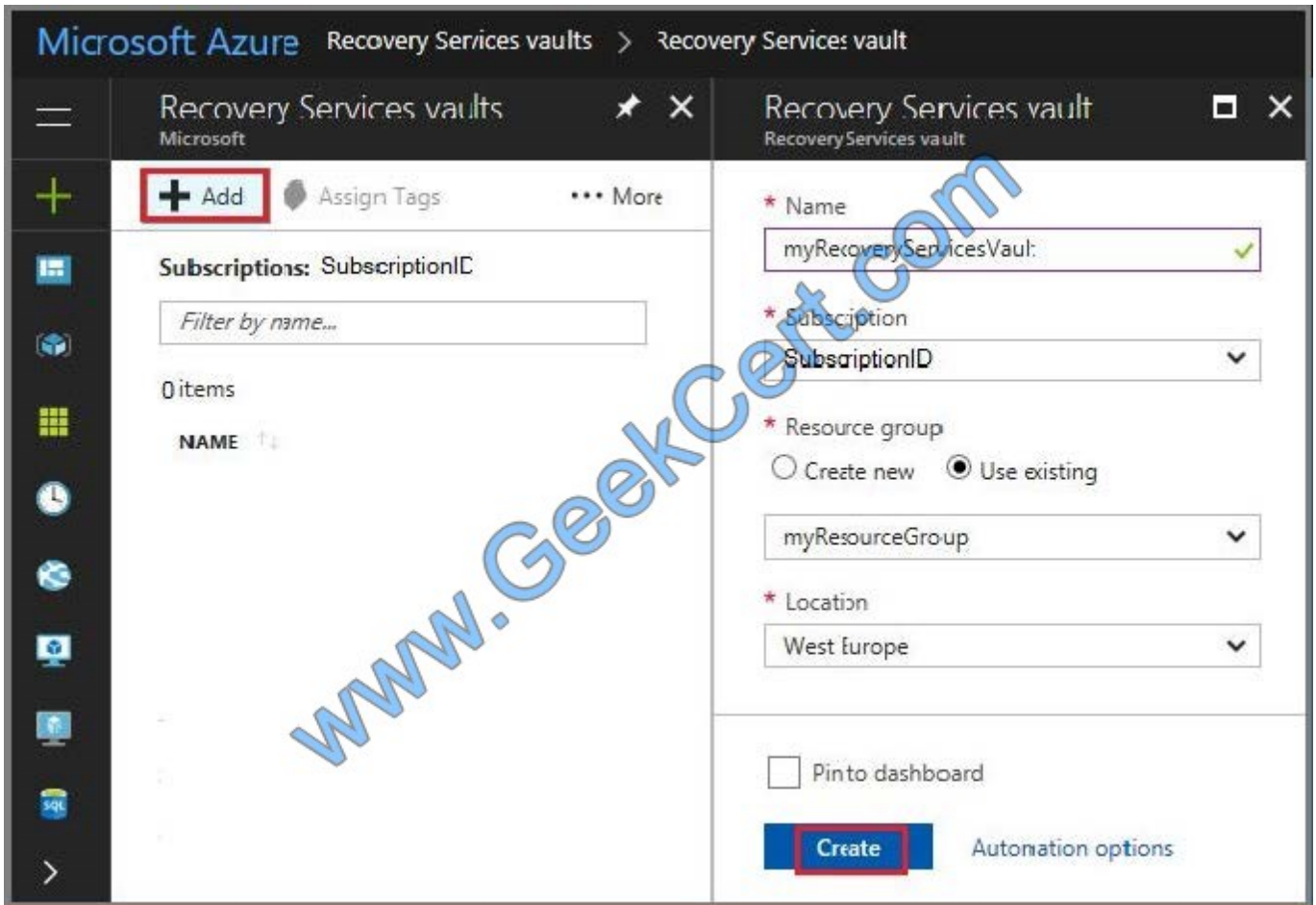
Correct Answer:

First, create Recovery Services vault.

Step 1: On the left-hand menu, select All services and in the services list, type Recovery Services. As you type, the list of resources filters. When you see Recovery Services vaults in the list, select it to open the Recovery Services vaults menu.



Step 2: In the Recovery Services vaults menu, click Add to open the Recovery Services vault menu.



Step 3: In the Recovery Services vault menu, for example,

Type myRecoveryServicesVault in Name.

The current subscription ID appears in Subscription. If you have additional subscriptions, you could choose another subscription for the new vault.

For Resource group select Use existing and choose myResourceGroup. If myResourceGroup doesn't exist, select Create new and type myResourceGroup.

From the Location drop-down menu, choose West Europe.

Click Create to create your Recovery Services vault.

References: <https://docs.microsoft.com/en-us/azure/backup/tutorial-backup-vm-at-scale>

[AZ-102 VCE Dumps](#)

[AZ-102 Study Guide](#)

[AZ-102 Exam Questions](#)



To Read the [Whole Q&As](#), please purchase the [Complete Version](#) from [Our website](#).

Try our product !

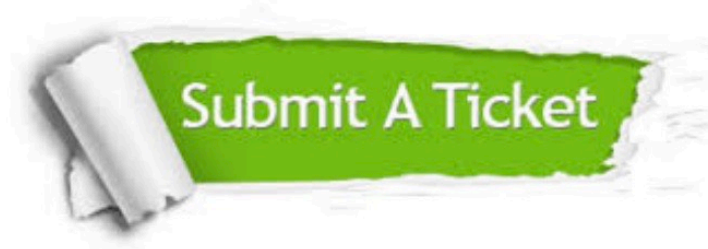
- 100% Guaranteed Success
- 100% Money Back Guarantee
- 365 Days Free Update
- Instant Download After Purchase
- 24x7 Customer Support
- Average 99.9% Success Rate
- More than 800,000 Satisfied Customers Worldwide
- Multi-Platform capabilities - [Windows](#), [Mac](#), [Android](#), [iPhone](#), [iPod](#), [iPad](#), [Kindle](#)

We provide exam PDF and VCE of Cisco, Microsoft, IBM, CompTIA, Oracle and other IT Certifications. You can view Vendor list of All Certification Exams offered:

<https://www.geekcert.com/allproducts>

Need Help

Please provide as much detail as possible so we can best assist you.
To update a previously submitted ticket:



 One Year Free Update <p>Free update is available within One Year after your purchase. After One Year, you will get 50% discounts for updating. And we are proud to boast a 24/7 efficient Customer Support system via Email.</p>	 Money Back Guarantee <p>To ensure that you are spending on quality products, we provide 100% money back guarantee for 30 days from the date of purchase.</p>	 Security & Privacy <p>We respect customer privacy. We use McAfee's security service to provide you with utmost security for your personal information & peace of mind.</p>
---	---	--

Any charges made through this site will appear as Global Simulators Limited.
All trademarks are the property of their respective owners.
Copyright © geekcert, All Rights Reserved.