



AZ-140^{Q&As}

Configuring and Operating Windows Virtual Desktop on Microsoft Azure

Pass Microsoft AZ-140 Exam with 100% Guarantee

Free Download Real Questions & Answers **PDF** and **VCE** file from:

<https://www.geekcert.com/az-140.html>

100% Passing Guarantee
100% Money Back Assurance

Following Questions and Answers are all new published by Microsoft
Official Exam Center

-  **Instant Download** After Purchase
-  **100% Money Back** Guarantee
-  **365 Days** Free Update
-  **800,000+** Satisfied Customers





QUESTION 1

Note: This question is part of a series of questions that present the same scenario. Each question in the series contains a unique solution that might meet the stated goals. Some question sets might have more than one correct solution, while

others might not have a correct solution.

After you answer a question in this section, you will NOT be able to return to it. As a result, these questions will not appear in the review screen.

You are developing a web app named mywebapp1. Mywebapp1 uses the address myapp1.azurewebsites.net. You protect mywebapp1 by implementing an Azure

Web Application Firewall (WAF). The traffic to mywebapp1 is routed through an Azure Application Gateway instance that is also used by other web apps.

You want to secure all traffic to mywebapp1 by using SSL.

Configure the HTTP setting and set the Override backend path option to mywebapp1.azurewebsites.net.

?

Solution: You open the Azure Application Gateway

You then add an authentication certificate for mywebapp1.azurewebsites.net. Does this meet the goal?

A. Yes

B. No

Correct Answer: B

In case of end to end SSL, trusted Azure services such as Azure App service web apps do not require whitelisting the backends in the application gateway.

Therefore, there is no need to add any authentication certificates.

Reference:

<https://docs.microsoft.com/en-us/azure/application-gateway/application-gateway-web-app-overview>

QUESTION 2

You have a shared image gallery that contains the Windows 10 images shown in the following table.



Name	Location	Operating system state
Image1	West US	Generalized
Image2	West US	Specialized
Image3	West Europe	Generalized
Image4	West Europe	Specialized

You create an Azure Virtual Desktop deployment that has the following settings:

1.

Host pool name: Pool1

2.

Location: West US

3.

Host pool type: Personal

Which images can you use for the session hosts?

A. Image1 only

B. Image1, Image2, Image3, and Image4

C. Image2 only

D. Image1 and Image2 only

E. Image1 and Image3 only

Correct Answer: A

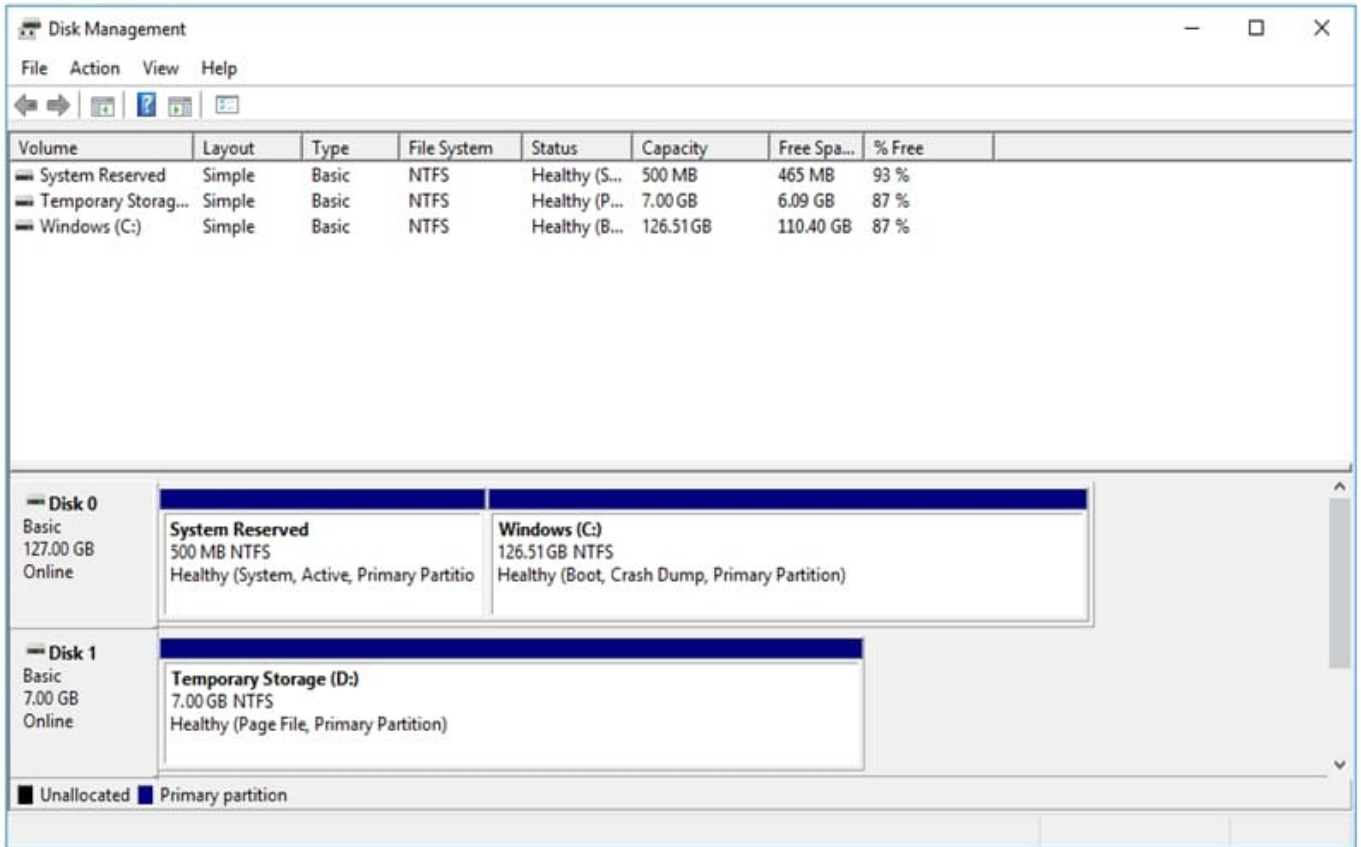
Reference: <https://azure.microsoft.com/en-in/blog/vm-image-blog-post/>

QUESTION 3

DRAG DROP

You have a Windows Virtual Desktop deployment.

You have a session host named Host1 that has the disk layout shown in the exhibit. (Click the Exhibit tab.)



You plan to deploy an app that must be installed on D. The app requires 500 GB of disk space.

You need to add a new data disk that will be assigned the drive letter D. The solution must maintain the current performance of Host1.

Which four actions should you perform in sequence? To answer, move the appropriate actions from the list of actions to the answer area and arrange them in the correct order.

Select and Place:

Actions	Answer Area
Move the page file to drive C.	
Move the page file to Temporary Storage.	
Change the drive letter of Temporary Storage (D:).	⏪
Mark Temporary Storage (D:) as Active .	⏩
Add the new disk and assign drive D.	
Move the page file to System Reserved.	⏴

Correct Answer:



Actions	Answer Area
<input type="text"/>	<input type="text" value="Move the page file to drive C."/>
<input type="text"/>	<input type="text" value="Change the drive letter of Temporary Storage (D:)."/>
<input type="text"/>	<input type="text" value="Add the new disk and assign drive D."/> ⬅ ⬆
<input type="text" value="Mark Temporary Storage (D:) as Active."/>	<input type="text" value="Move the page file to Temporary Storage."/> ➡ ⬇
<input type="text"/>	
<input type="text" value="Move the page file to System Reserved."/>	

Reference: <https://www.azurecorner.com/change-temporary-drive-azure-vm-use-d-persistent-data-disks/>

QUESTION 4

You plan to deploy Azure Virtual Desktop session host virtual machines based on a preconfigured master image. The master image will be stored in a shared image gallery.

You create a virtual machine named Image1 to use as the master image. You install applications and apply configuration changes to Image1.

You need to ensure that the new session host virtual machines created based on Image1 have unique names and security identifiers.

What should you do on Image1 before you add the image to the shared image gallery?

- A. At a command prompt, run the set computername command.
- B. At a command prompt, run the sysprep command.
- C. From PowerShell, run the rename-computer cmdlet.
- D. From the lock screen of the Windows device, perform a Windows Autopilot Reset.

Correct Answer: B

Reference: <https://docs.microsoft.com/en-us/azure/virtual-machines/windows/prepare-for-upload-vhd-image#determine-when-to-use-sysprep>

QUESTION 5

You create the virtual machines shown in the following table.



Name	State
SourceVM1	Specialized state
SourceVM2	Generalized state
SourceVM3	Audit mode

You need a source virtual hard disk for new Azure Virtual Desktop session host deployments. The source operating system must have user-specific and machine-specific information removed. Which virtual machines can you use as the source?

- A. SourceVM3 only
- B. SourceVM1 only
- C. SourceVM1, SourceVM2, and SourceVM3
- D. SourceVM1 and SourceVM2 only
- E. SourceVM2 only

Correct Answer: E

SourceVM2 Only because user-information and machine-specific information should be removed because it is specifically mentioned.

[Latest AZ-140 Dumps](#)

[AZ-140 VCE Dumps](#)

[AZ-140 Brindumps](#)