



AZ-302^{Q&As}

Microsoft Azure Solutions Architect Certification Transition

Pass Microsoft AZ-302 Exam with 100% Guarantee

Free Download Real Questions & Answers **PDF** and **VCE** file from:

<https://www.geekcert.com/az-302.html>

100% Passing Guarantee
100% Money Back Assurance

Following Questions and Answers are all new published by Microsoft
Official Exam Center

-  **Instant Download** After Purchase
-  **100% Money Back** Guarantee
-  **365 Days** Free Update
-  **800,000+** Satisfied Customers





QUESTION 1

You have an Azure subscription named Subscription1 that contains a virtual network named VNet1. VNet1 is in a resource group named RG1.

Subscription1 has a user named User1. User1 has the following roles:

Reader

Security Admin

Security Reader

You need to ensure that User1 can assign the Reader role for VNet1 to other users.

What should you do?

A. Assign User1 the Owner role for VNet1.

B. Assign User1 the Network Contributor role for VNet1.

C. Remove User1 from the Security Reader and Reader roles for Subscription1. Assign User1 the Contributor role for Subscription1.

D. Remove User1 from the Security Reader and Reader roles for Subscription1.

Correct Answer: A

QUESTION 2

DRAG DROP

You plan to create a Docker image that runs an ASP.NET Core application named ContosoApp. You have a setup script named setupScript.ps1 and a series of application files including ContosoApp.dll.

You need to create a Dockerfile document that meets the following requirements:

Call setupScript.ps1 when the container is built.

Run ContosoApp.dll when the container starts.

The Dockerfile document must be created in the same folder where ContosoApp.dll and setupScript.ps1 are stored.

Which four commands should you use to develop the solution? To answer, move the appropriate commands from the list of commands to the answer area and arrange them in the correct order.

Select and Place:



Commands

```
RUN powershell ./setupScript.ps1  
CMD ["dotnet", "ContosoApp.dll"]
```

```
FROM microsoft/aspnetcore:2.0
```

```
CMD powershell ./setupScript.ps1  
ENTRYPOINT ["dotnet",  
"ContosoApp.dll"]
```

```
WORKDIR /apps/ContosoApp
```

```
EXPOSE ./ContosoApp/ /apps/ContosoApp
```

```
COPY ./.
```

Answer Area

WWW.GeekCert.com

Correct Answer:



Commands

```
CMD powershell ./setupScript.ps1  
ENTRYPOINT ["dotnet",  
"ContosoApp.dll"]
```

```
EXPOSE ./ContosoApp/ /apps/ContosoApp
```

Answer Area

```
FROM microsoft/aspnetcore:2.0
```

```
WORKDIR /apps/ContosoApp
```

```
COPY ./
```

```
RUN powershell ./setupScript.ps1  
CMD ["dotnet", "ContosoApp.dll"]
```

QUESTION 3

You have 100 Standard F2vs-v2 Azure virtual machines. Each virtual machine has two network adapter.

You need to increase the network performance of the workloads running on the virtual machine. The solution must meet the following requirements.

*The CPU-to-memory ratio must remain the same.

*The solution must minimize costs.

What should you do?

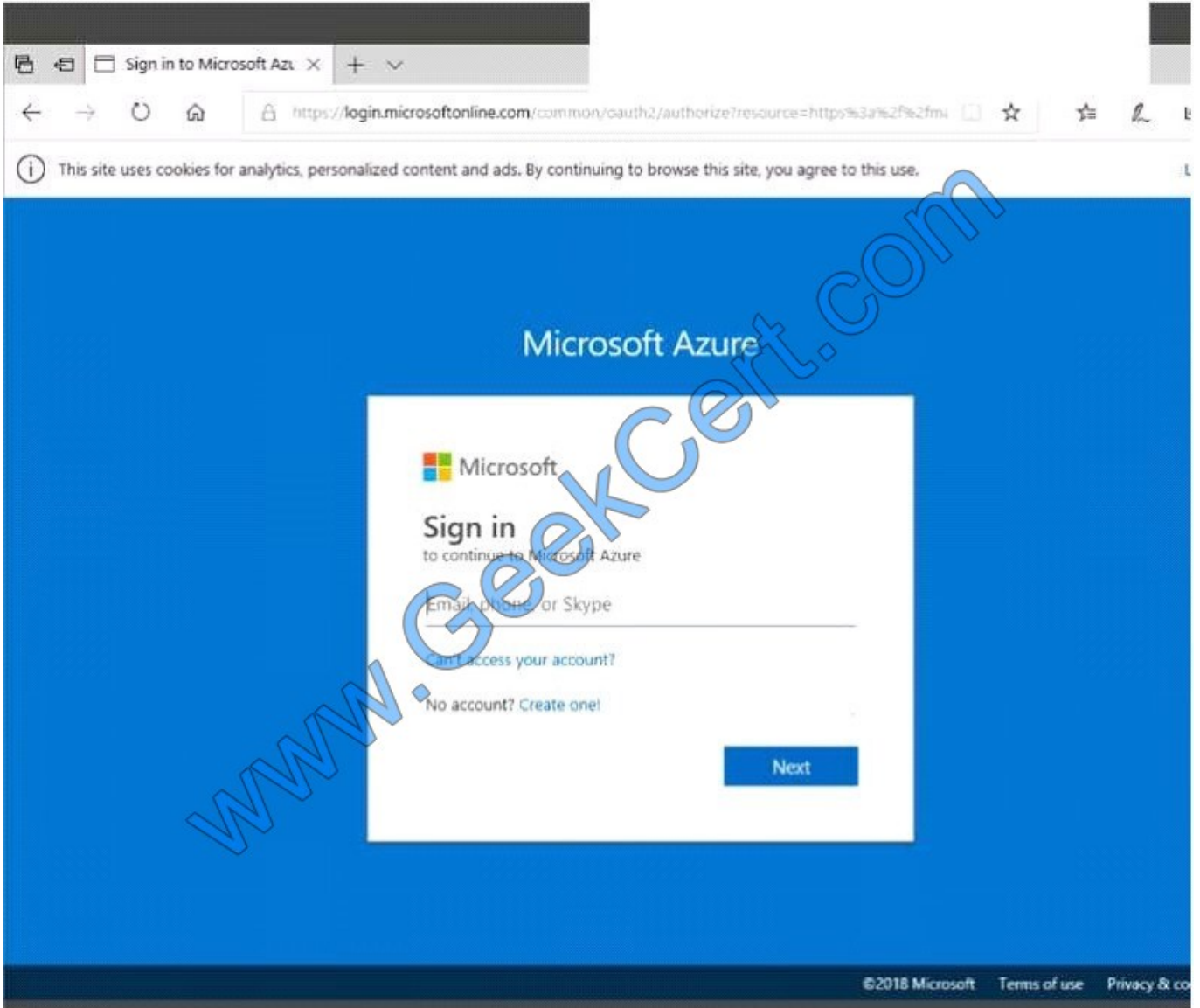
- A. Enable SRIOV
- B. Enable ROMA over InfiniBand
- C. Install an additional network adapter.
- D. Configure NIC teaming.

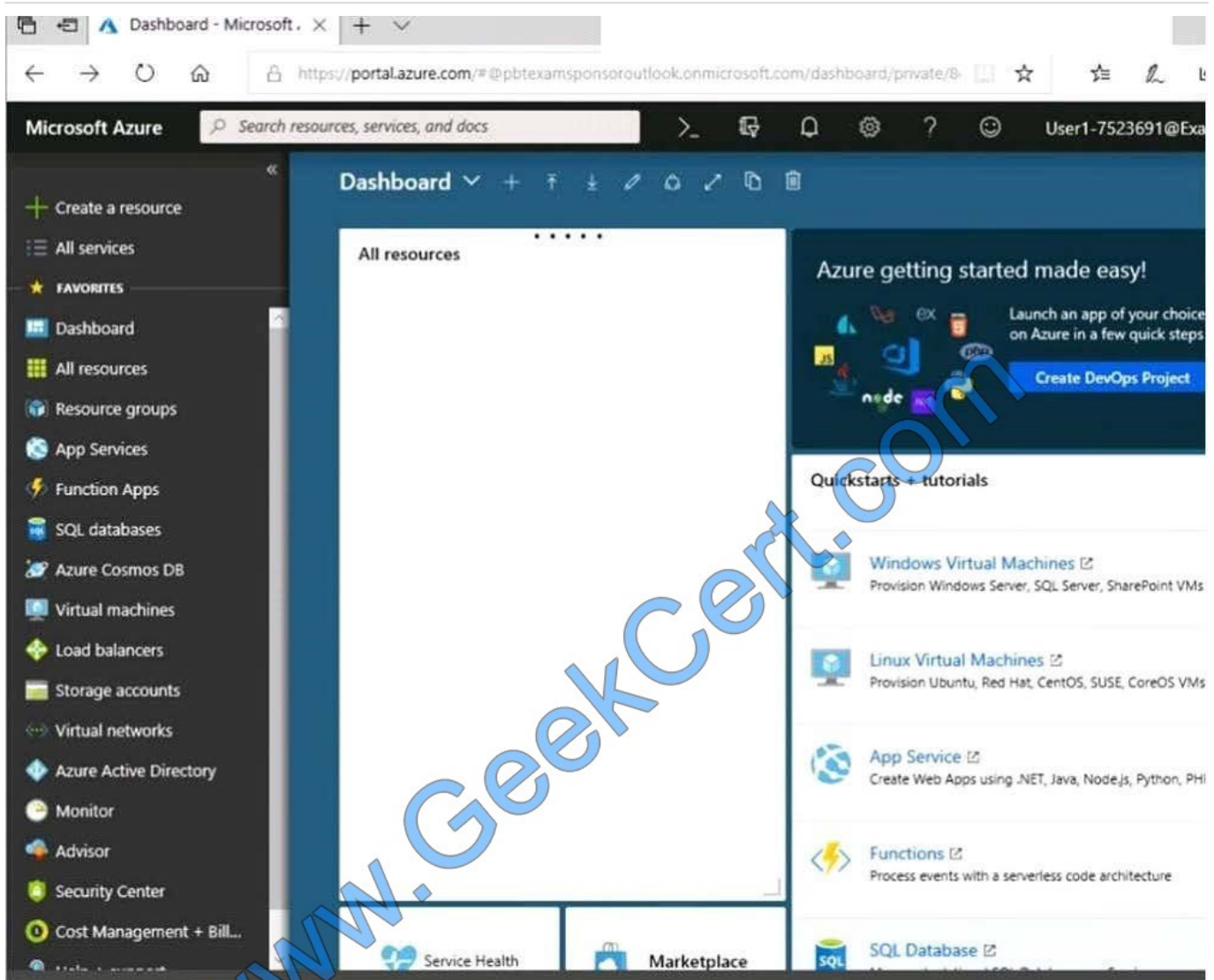
Correct Answer: A



QUESTION 4

Click to expand each objective. To connect to the Azure portal, type <https://portal.azure.com> in the browser address bar.





Instructions Comments Controls Available Keyboard Shortcuts Available

Tasks

Click to expand each objective

- Configure servers
 - Add the "Print and Document Services" role to server LON-SVR1, installing any required management features and enabling both Print and LFD Services.
- + Configure file and share access

When you are finished performing all the tasks, click the `Next` button. Note that you cannot return to the lab once you click the `Next` button. Scoring occurs in the background while you complete the rest of the exam.

Overview

The following section of the exam is a lab. In this section, you will perform a set of tasks in a live environment. While most functionality will be available to you as it would be in a live environment, some functionality (e.g., copy and paste,



ability

to navigate to external websites) will not be possible by design. Scoring is based on the outcome of performing the tasks stated in the lab. In other words, it doesn't matter how you accomplish the task, if you successfully perform it, you will earn credit for that task.

Labs are not timed separately, and this exam may have more than one lab that you must complete. You can use as much time as you would like to complete each lab. But, you should manage your time appropriately to ensure that you are

able to complete the lab(s) and all other sections of the exam in the time provided. Please note that once you submit your work by clicking the Next button within a lab, you will NOT be able to return to the lab.

To start the lab

You may start the lab by clicking the Next button.

Another administrator attempts to establish connectivity between two virtual networks named VNET1 and VNET2.

The administrator reports that connections across the virtual networks fail. You need to ensure that network connections can be established successfully between VNET1 and VNET2 as quickly as possible.

What should you do from the Azure portal?

A. See solution below.

B. See solution below.

Correct Answer: A

You can connect one VNet to another VNet using either a Virtual network peering, or an Azure VPN Gateway.

To create a virtual network gateway

Step1 : In the portal, on the left side, click +Create a resource and type 'virtual network gateway' in search. Locate Virtual network gateway in the search return and click the entry. On the Virtual network gateway page, click Create at the

bottom of the page to open the Create virtual network gateway page.

Step 2: On the Create virtual network gateway page, fill in the values for your virtual network gateway.



Create virtual network gateway □ ×

* Name

Gateway type ⓘ
 VPN ExpressRoute

VPN type ⓘ
 Route-based Policy-based

* SKU ⓘ
 ▾

Enable active-active mode ⓘ

* Virtual network ⓘ >

* Public IP address ⓘ
 Create new Use existing

WWW.GEEKCERT.COM



^ Configure public IP address

SKU

* Assignment

Dynamic Static

Configure BGP ASN ⓘ

* Subscription

Windows Azure Internal Consumption ▼

Resource group ⓘ

-

* Location ⓘ

▼

Create Automation options

Name: Name your gateway. This is not the same as naming a gateway subnet. It's the name of the gateway object you are creating.

Gateway type: Select VPN. VPN gateways use the virtual network gateway type VPN.

Virtual network: Choose the virtual network to which you want to add this gateway.

Click Virtual network to open the "Choose a virtual network" page. Select the VNet. If you don't see your VNet, make sure the Location field is pointing to the region in which your virtual network is located.

Gateway subnet address range: You will only see this setting if you did not previously create a gateway subnet for your virtual network. If you previously created a valid gateway subnet, this setting will not appear.

Step 4: Select Create New to create a Gateway subnet.



Add subnet
RMVNet

Name
GatewaySubnet

Address range (CIDR block) ⓘ
192.168.0.0/26 ✓
192.168.0.0 - 192.168.0.63 (59 + 5 Azure reserved addresses)

Route table
None >

Service endpoints
Services ⓘ
0 selected ▾

Subnet delegation
Delegate subnet to a service ⓘ
None ▾

Step 5: Click Create to begin creating the VPN gateway. The settings are validated and you'll see the "Deploying Virtual network gateway" tile on the dashboard.

Creating a gateway can take up to 45 minutes. You may need to refresh your portal page to see the completed status.

References: <https://docs.microsoft.com/en-us/azure/vpn-gateway/vpn-gateway-howto-vnet-vnet-resource-manager-portal?>

QUESTION 5

You deploy two instances of an Azure web app. One instance is in the East US Azure region and the other instance is in the West US Azure region. The web app uses Azure Blob storage to deliver large files to end users.

You need to recommend a solution for delivering the files to the users. The solution must meet the following requirements:

Ensure that the users receive files from the same region as the web app that they access.

Ensure that the files only need to be updated once.

Minimize costs.

What should you include in the recommendation?



- A. Azure File Sync
- B. Distributed File System (DFS)
- C. read-access geo-redundant storage (RA-GRS)
- D. geo-redundant storage (GRS)

Correct Answer: C

[AZ-302 VCE Dumps](#)

[AZ-302 Practice Test](#)

[AZ-302 Braindumps](#)



To Read the [Whole Q&As](#), please purchase the [Complete Version](#) from [Our website](#).

Try our product !

- 100% Guaranteed Success
- 100% Money Back Guarantee
- 365 Days Free Update
- Instant Download After Purchase
- 24x7 Customer Support
- Average 99.9% Success Rate
- More than 800,000 Satisfied Customers Worldwide
- Multi-Platform capabilities - [Windows](#), [Mac](#), [Android](#), [iPhone](#), [iPod](#), [iPad](#), [Kindle](#)

We provide exam PDF and VCE of Cisco, Microsoft, IBM, CompTIA, Oracle and other IT Certifications. You can view Vendor list of All Certification Exams offered:

<https://www.geekcert.com/allproducts>

Need Help

Please provide as much detail as possible so we can best assist you.
To update a previously submitted ticket:



 One Year Free Update <p>Free update is available within One Year after your purchase. After One Year, you will get 50% discounts for updating. And we are proud to boast a 24/7 efficient Customer Support system via Email.</p>	 Money Back Guarantee <p>To ensure that you are spending on quality products, we provide 100% money back guarantee for 30 days from the date of purchase.</p>	 Security & Privacy <p>We respect customer privacy. We use McAfee's security service to provide you with utmost security for your personal information & peace of mind.</p>
---	---	--

Any charges made through this site will appear as Global Simulators Limited.
All trademarks are the property of their respective owners.
Copyright © geekcert, All Rights Reserved.