



AZ-400^{Q&As}

Designing and Implementing Microsoft DevOps Solutions

Pass Microsoft AZ-400 Exam with 100% Guarantee

Free Download Real Questions & Answers **PDF** and **VCE** file from:

<https://www.geekcert.com/az-400.html>

100% Passing Guarantee
100% Money Back Assurance

Following Questions and Answers are all new published by Microsoft
Official Exam Center

-  **Instant Download** After Purchase
-  **100% Money Back** Guarantee
-  **365 Days** Free Update
-  **800,000+** Satisfied Customers





QUESTION 1

HOTSPOT

You are finalizing a release in GitHub.

You need to apply the following labels to the release:

1.

Name

2.

Email

3.

Release v3.0

4.

Release date

How should you complete the git command? To answer, select the appropriate options in the answer area.

NOTE: Each correct selection is worth one point.

Hot Area:

Answer Area

git

▼
add
commit
push
tag

▼
-a
-b
-c
-m

 v3.0

▼
-a
-b
-c
-m

 "Release v3.0"

Correct Answer:



Answer Area

git

	▼
add	-a
commit	-b
push	-c
tag	-m

v3.0

	▼
-a	
-b	
-c	
-m	

"Release v3.0"

Box 1; tag

Tagging. Like most VCSs, Git has the ability to tag specific points in a repository's history as being important. Typically, people use this functionality to mark release points (v1.0, v2.0 and so on).

Box 2: -a

Creating an annotated tag in Git is simple. The easiest way is to specify -a when you run the tag command:

Example:

```
$ git tag -a v1.4 -m "my version 1.4"
```

Box 3: -m

QUESTION 2

Your company creates a new Azure DevOps team.

You plan to use Azure DevOps for sprint planning.

You need to visualize the flow of your work by using an agile methodology.

Which Azure DevOps component should you use?

- A. Kanban boards
- B. sprint planning
- C. delivery plans
- D. portfolio backlogs

Correct Answer: A

Customizing Kanban boards To maximize a team's ability to consistently deliver high quality software, Kanban emphasize two main practices. The first, visualize the flow of work, requires you to map your team's workflow stages and configure your Kanban board to match. Your Kanban board turns your backlog into an interactive signboard, providing a visual flow of work.

Reference: <https://azuredevopslabs.com/labs/azuredevops/agile/>



QUESTION 3

SIMULATION

You plan to store signed images in an Azure Container Registry instance named az4009940427acr1.

You need to modify the SKU for az4009940427acr1 to support the planned images. The solution must minimize costs.

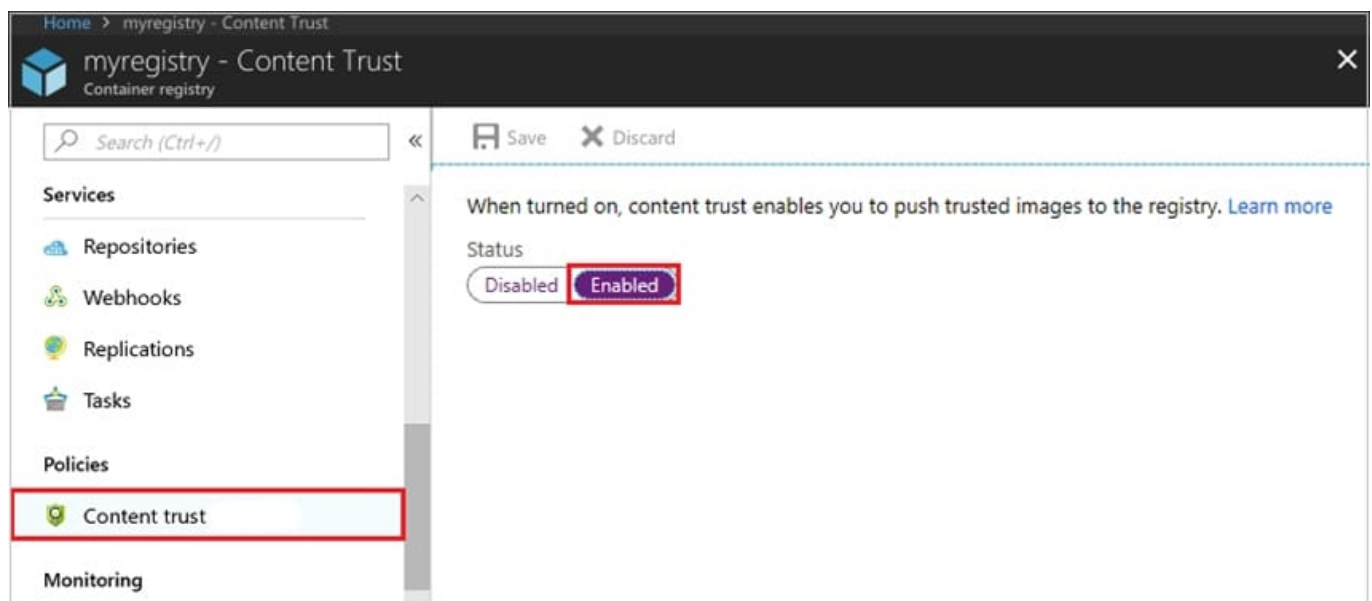
To complete this task, sign in to the Microsoft Azure portal.

Correct Answer: See solution below.

1. Open Microsoft Azure Portal, and select the Azure Container Registry instance named az4009940427acr1.

2.

Under Policies, select Content Trust > Enabled > Save.



References: <https://docs.microsoft.com/en-us/azure/container-registry/container-registry-content-trust>

QUESTION 4

HOTSPOT

You need to deploy Azure Kubernetes Service (AKS) to host an application. The solution must meet the following requirements:

1.

Containers must only be published internally.



2.

AKS clusters must be able to create and manage containers in Azure.

What should you use for each requirement? To answer, select the appropriate options in the answer area.

NOTE: Each correct selection is worth one point.

Hot Area:

Answer Area

Containers must only be published internally:

	▼
Azure Container Instances	
Azure Container Registry	
Dockerfile	

AKS clusters must be able to create and manage containers in Azure:

	▼
An Azure Active Directory (Azure AD) group	
An Azure Automation account	
An Azure service principal	

Correct Answer:

Answer Area

Containers must only be published internally:

	▼
Azure Container Instances	
Azure Container Registry	
Dockerfile	

AKS clusters must be able to create and manage containers in Azure:

	▼
An Azure Active Directory (Azure AD) group	
An Azure Automation account	
An Azure service principal	

Box 1: Azure Container Registry Azure services like Azure Container Registry (ACR) and Azure Container Instances (ACI) can be used and connected from independent container orchestrators like kubernetes (k8s). You can set up a custom ACR and connect it to an existing k8s cluster to ensure images will be pulled from the private container registry instead of the public docker hub.

Box 2: An Azure service principal When you\\re using Azure Container Registry (ACR) with Azure Kubernetes Service (AKS), an authentication mechanism needs to be established. You can set up AKS and ACR integration during the initial creation of your AKS cluster. To allow an AKS cluster to interact with ACR, an Azure Active Directory service principal is used.

References:



<https://thorsten-hans.com/how-to-use-private-azure-container-registry-with-kubernetes>

<https://docs.microsoft.com/en-us/azure/aks/cluster-container-registry-integration>

QUESTION 5

Note: This question is part of a series of questions that present the same scenario. Each question in the series contains a unique solution that might meet the stated goals. Some question sets might have more than one correct solution, while

others might not have a correct solution.

After you answer a question in this section, you will NOT be able to return to it. As a result, these questions will not appear in the review screen.

You have an approval process that contains a condition. The condition requires that releases be approved by a team leader before they are deployed.

You have a policy stating that approvals must occur within eight hours.

You discover that deployment fail if the approvals take longer than two hours.

You need to ensure that the deployments only fail if the approvals take longer than eight hours.

Solution: From Post-deployment conditions, you modify the Timeout setting for post-deployment approvals.

Does this meet the goal?

A. Yes

B. No

Correct Answer: B

Use Pre-deployments conditions instead. Use a gate instead of an approval instead.

References: <https://docs.microsoft.com/en-us/azure/devops/pipelines/release/approvals/gates>

[Latest AZ-400 Dumps](#)

[AZ-400 PDF Dumps](#)

[AZ-400 Braindumps](#)