



C2090-011^{Q&As}

IBM SPSS Statistics Level 1 v2

Pass IBM C2090-011 Exam with 100% Guarantee

Free Download Real Questions & Answers **PDF** and **VCE** file from:

<https://www.geekcert.com/c2090-011.html>

100% Passing Guarantee
100% Money Back Assurance

Following Questions and Answers are all new published by IBM Official Exam Center

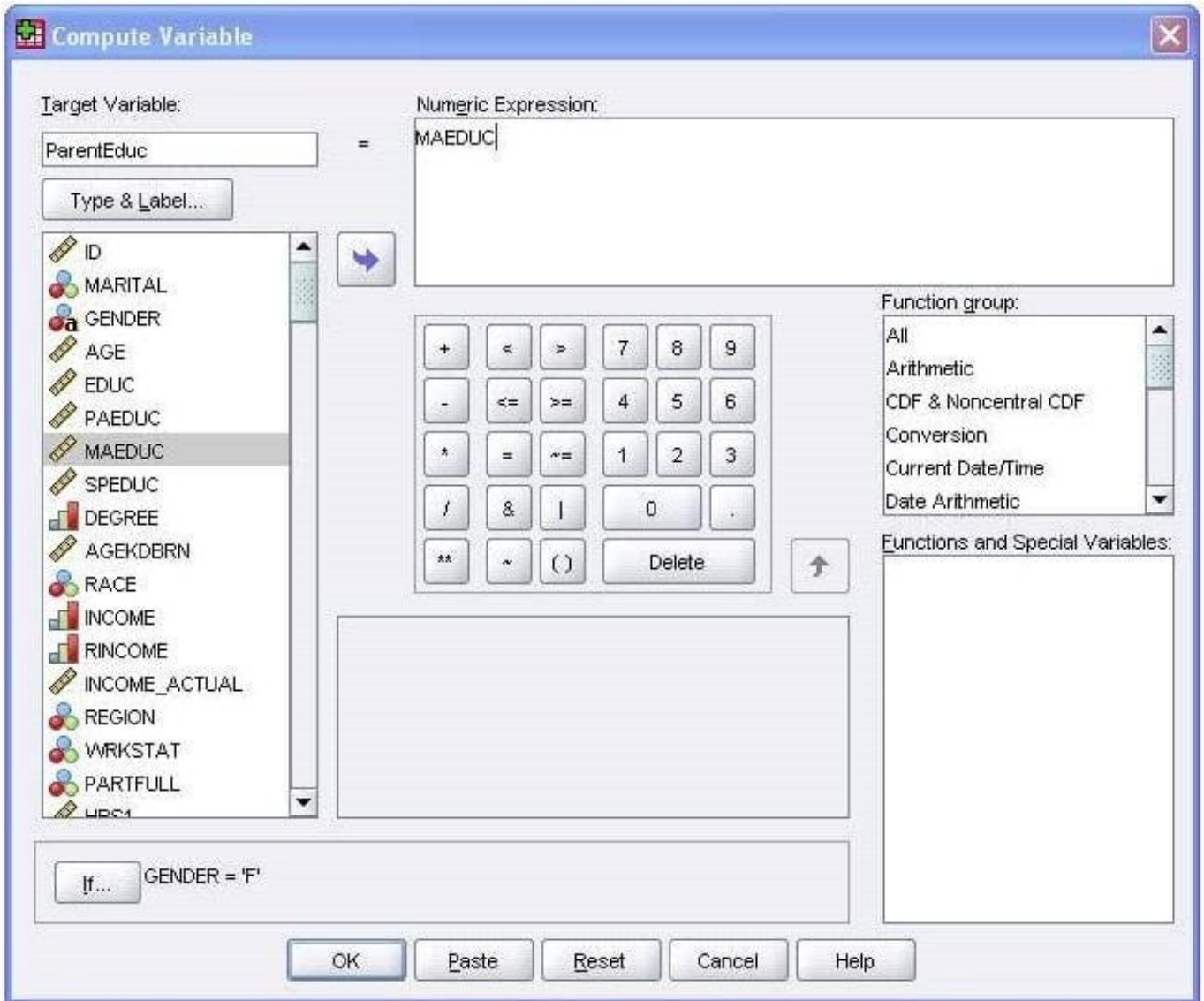
-  **Instant Download** After Purchase
-  **100% Money Back** Guarantee
-  **365 Days** Free Update
-  **800,000+** Satisfied Customers





QUESTION 1

The Compute Variable dialog shown below performs which of the following operations? (Choose two.)



- A. Sets the value of ParentEduc equal to the value of MAEDUC.
- B. Sets the value of ParentEduc equal to the value of MAEDUC if the value of GENDER is
- C.
- D. Sets the value of ParentEduc equal to the system-missing value if the value of GENDER is blank.
- E. Sets the value of ParentEduc equal to the user-missing value if the value of GENDER is blank.

Correct Answer: BC



QUESTION 2

Suppose you want to copy and paste variable definitions from 481 variables in one data file to 481 corresponding variables in a second data file. The only way to do this is to select and copy each variable's definitions in the first file and paste to the corresponding variable in the second file.

- A. True
- B. False

Correct Answer: B

QUESTION 3

Which interpretation is correct for this Regression Coefficients table?

Coefficients^a

Model		Unstandardized Coefficients		Standardized Coefficients	t	Sig.
		B	Std. Error	Beta		
1	(Constant)	-624.687	1186.460		-.527	.599
	Employee Gender	-1629.252	264.350	-.249	-6.163	.000
	Minority Classification	-992.918	284.710	-.124	-3.487	.001
	Educational Level (years)	642.284	43.296	.589	14.835	.000
	Employee Age	35.871	17.265	.131	2.078	.038
	Work Experience (years)	22.695	23.602	.062	.962	.337
	Months on Job	-21.770	11.126	-.068	-1.957	.051

a. Dependent Variable: Beginning Salary

- A. For every additional year that you get older, your beginning salary decreases on average by \$13.
- B. For every additional year that you get older, your beginning salary decreases on average by \$35.9.
- C. For every additional year that you get older, your beginning salary increases on average by \$13.
- D. For every additional year that you get older, your beginning salary increases on average by \$35.9.

Correct Answer: D

QUESTION 4

The Merge Files facility is located under which menu?

- A. View
- B. Transform
- C. Analyze



D. Data

Correct Answer: D

QUESTION 5

If you use the IBM SPSS Statistics Select Cases dialog to conduct analysis on a subset of cases and you want to keep all cases in the same dataset, which option is appropriate?

- A. Copy unselected cases to a new dataset
- B. Copy selected cases to a new dataset
- C. Filter out unselected cases
- D. Delete unselected cases

Correct Answer: C

[C2090-011 PDF Dumps](#)

[C2090-011 Practice Test](#)

[C2090-011 Brindumps](#)