



C2090-013^{Q&As}

IBM SPSS Modeler Data Mining for Business Partners v2

Pass IBM C2090-013 Exam with 100% Guarantee

Free Download Real Questions & Answers **PDF** and **VCE** file from:

<https://www.geekcert.com/c2090-013.html>

100% Passing Guarantee
100% Money Back Assurance

Following Questions and Answers are all new published by IBM Official Exam Center

-  **Instant Download** After Purchase
-  **100% Money Back** Guarantee
-  **365 Days** Free Update
-  **800,000+** Satisfied Customers





QUESTION 1

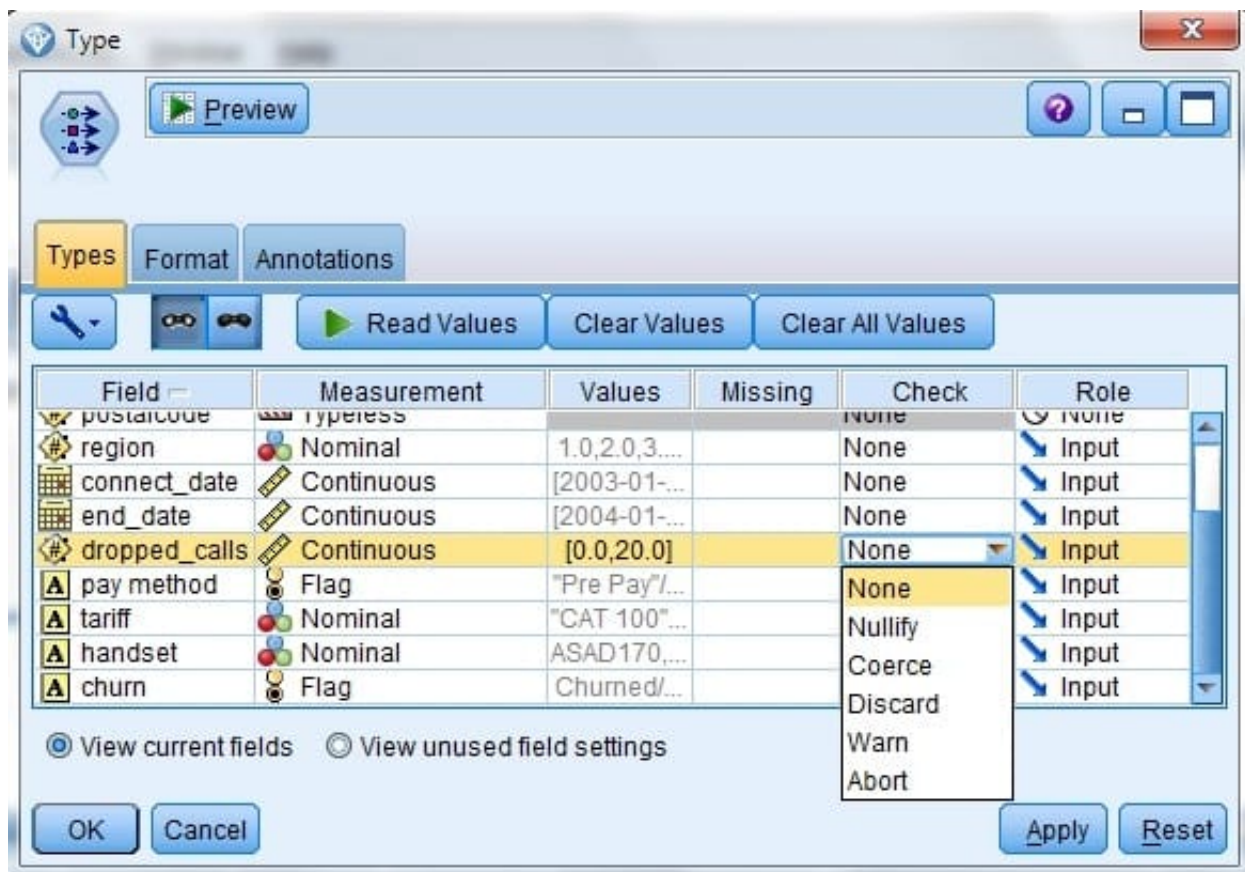
Which node can be used to impute (estimate) missing values?

- A. Data Audit node
- B. Balance node
- C. Filler node
- D. Reclassify node

Correct Answer: A

QUESTION 2

Given the Type node shown below,



what specifications are necessary to change all values outside the range 1 to 15 in field dropped_calls to the undefined (\$null\$) value?

- A. Pass Values and Check action Nullify
- B. Specify Values Lower 1 and Upper 15 and Check action Nullify
- C. Specify Values Lower 1 and Upper 15 and Check action Discard



D. Read Values and Check action Warn

Correct Answer: B

QUESTION 3

A prison system has historical data on prison inmates and wants to find what factors are related to recidivism (return to prison). What type of model would be used?

- A. Segmentation model
- B. Classification model
- C. Association model
- D. Anomaly model

Correct Answer: B

QUESTION 4

Which fields are created by this Derive dialog?



Preview

Derive as: Formula

Settings Annotations

Mode: Single Multiple

Derive from:

- Travel1
- Travel2
- Travel3
- Travel4

Field name extension: Add as: Suffix Prefix

Derive as: TIP: Refer to selected fields by using @FIELD

Field type:

Formula:

```
date_weeks_difference(AcctEst,@FIELD)
```

OK Cancel Apply Reset

- A. Three fields representing the difference between Travel-1 and each of the other Travel fields
- B. No operation will be performed because the expression is invalid.
- C. Four fields representing the difference in weeks between AcctEst and each of the Travel fields
- D. A field representing the difference between AcctEst and the global @FIELD value

Correct Answer: C

QUESTION 5

True or false: association models require all fields used to be defined with the role of both.

- A. True



B. False

Correct Answer: A

[C2090-013 Practice Test](#)

[C2090-013 Study Guide](#)

[C2090-013 Exam Questions](#)