



# C2090-645<sup>Q&As</sup>

IBM Cognos 10 BI Multidimensional Author

## Pass IBM C2090-645 Exam with 100% Guarantee

Free Download Real Questions & Answers **PDF** and **VCE** file from:

<https://www.geekcert.com/c2090-645.html>

100% Passing Guarantee  
100% Money Back Assurance

Following Questions and Answers are all new published by IBM Official Exam Center

- ⚙️ **Instant Download** After Purchase
- ⚙️ **100% Money Back** Guarantee
- ⚙️ **365 Days** Free Update
- ⚙️ **800,000+** Satisfied Customers





### QUESTION 1

Assuming that Star products and Husky products are sets,

Revenue		2006
Tents	Star Peg	1,324,840.70
	Star Dome	28,721,600.42
	Star Lite	52,517,671.00
Rope	Husky Rope 60	5,635,713.50
	Husky Rope 50	8,887,288.00
	Husky Rope 100	17,671,847.80

which statement below is correct about the sets in the graphic?

- A. Each set is a grouping of members from different hierarchies.
- B. The report creates a query for each member of the set.
- C. The query displays each set as all the members of the level.
- D. Each set can be sorted and aggregated.

Correct Answer: D

### QUESTION 2

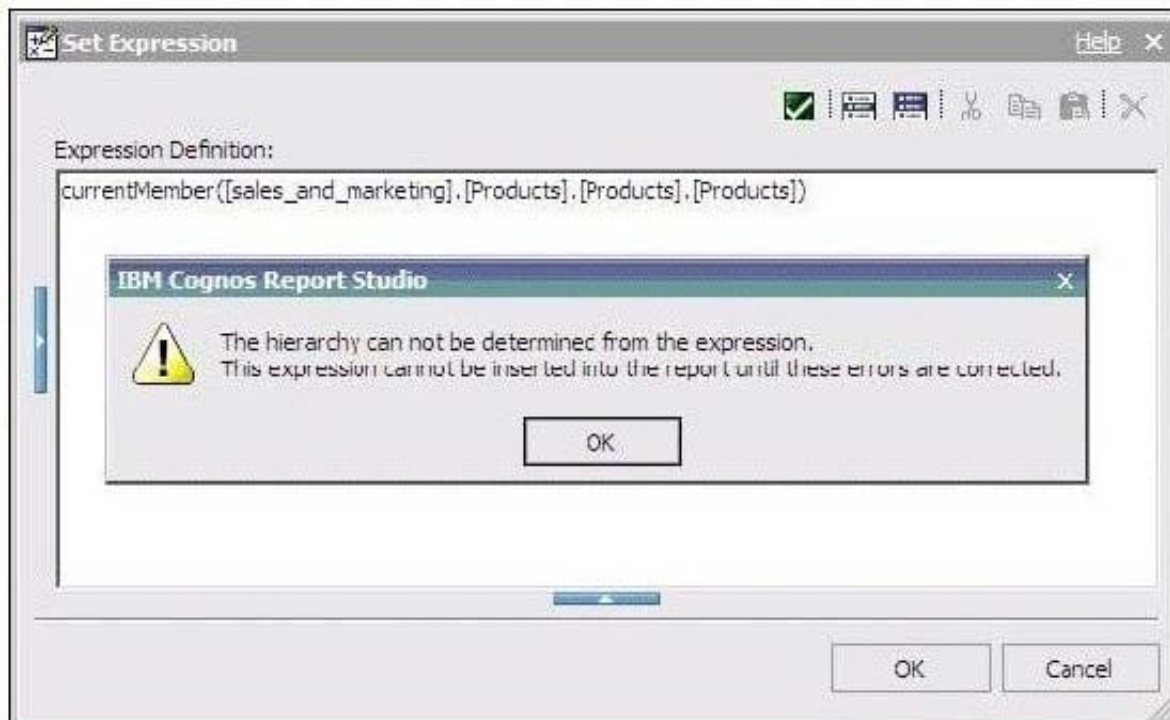
Why would a report author consider overriding the default drill behavior?

- A. To maintain the behavior of a complex edge expression after drilling, such as one which returns the top 5 members of a set.
- B. To replace all members within a hierarchy when drilling through to a report with more detail.
- C. To drill down to the lowest level of the hierarchy and then drill down again to display only one member.
- D. To drill down on a member and have its children display as details and have the member drilled on display as summary.

Correct Answer: A

### QUESTION 3

The dialog box shown appears when a report is run.



What should the report author do to correct the situation?

- A. Ask the modeler to rename the hierarchy to `\"[sales_and_marketing].[Products].[Products].[Products]\"`, and to republish the package.
- B. Modify the expression to change the `\"currentMember\"` function to `\"currentLevel\"`.
- C. Modify the expression to change the `\"currentMember\"` function to `\"currentHierarchy\"`.
- D. Modify the expression to `\"currentMember([sales_and_marketing].[Products].[Products])\"`.

Correct Answer: D

#### QUESTION 4

Which term below best describes the selected cell in the crosstab?

Revenue	2004	2005	2006
Camping Equipment	332,986,338.06	402,757,573.17	500,382,422.83
Personal Accessories	391,647,093.61	456,323,355.90	594,009,408.42
Outdoor Protection	36,165,521.07	25,008,574.08	10,349,175.84

- A. Level
- B. member
- C. Tuple



D. Revenue

Correct Answer: C

---

#### QUESTION 5

A report author can use a slicer to do what?

- A. Make the report database smaller and efficient
- B. Provide context to intersection values
- C. Reduce the number of members on the edge of the crosstab.
- D. Generate a zero suppression filter in the rows

Correct Answer: B

[Latest C2090-645 Dumps](#)

[C2090-645 VCE Dumps](#)

[C2090-645 Exam Questions](#)