



C2090-645^{Q&As}

IBM Cognos 10 BI Multidimensional Author

Pass IBM C2090-645 Exam with 100% Guarantee

Free Download Real Questions & Answers **PDF** and **VCE** file from:

<https://www.geekcert.com/c2090-645.html>

100% Passing Guarantee
100% Money Back Assurance

Following Questions and Answers are all new published by IBM Official Exam Center

-  **Instant Download** After Purchase
-  **100% Money Back** Guarantee
-  **365 Days** Free Update
-  **800,000+** Satisfied Customers





QUESTION 1

Instead of prompting the user to select any countries in Europe, the report author wants to constrain the user to select one or more countries from the Northern Europe region. What kind of prompt should be used and how can this be achieved?

- A. This is not possible because a prompt must always be populated with all members of a level.
- B. Create a multi-select value prompt. Populate it using an expression on the [Northern Europe] member to retrieve its children on the country level.
- C. Generate a prompt by creating an expression with a parameter on the crosstab edge: children([Northern Europe]->?Country?
- D. Create a tree prompt, and populate it using an expression on the[Northern Europe] member to retrieve its children at the country level.

Correct Answer: B

QUESTION 2

The following expression is used to focus OLAP data in the rows of a report: filter([sales_and_marketing].[Order method].[Order method type], [Revenue]>150000000).

Revenue	2004	2005	2006	2007
Telephone	178,793,580.36	107,160,284.09	37,199,842.80	17,832,073.81
Sales visit	101,072,721.10	79,721,524.37	73,918,652.38	55,481,936.15
Web	473,771,464.65	881,315,747.68	1,339,714,172.77	1,017,434,523.30
E-mail	95,402,796.21	44,318,886.43	23,701,042.57	16,420,318.95

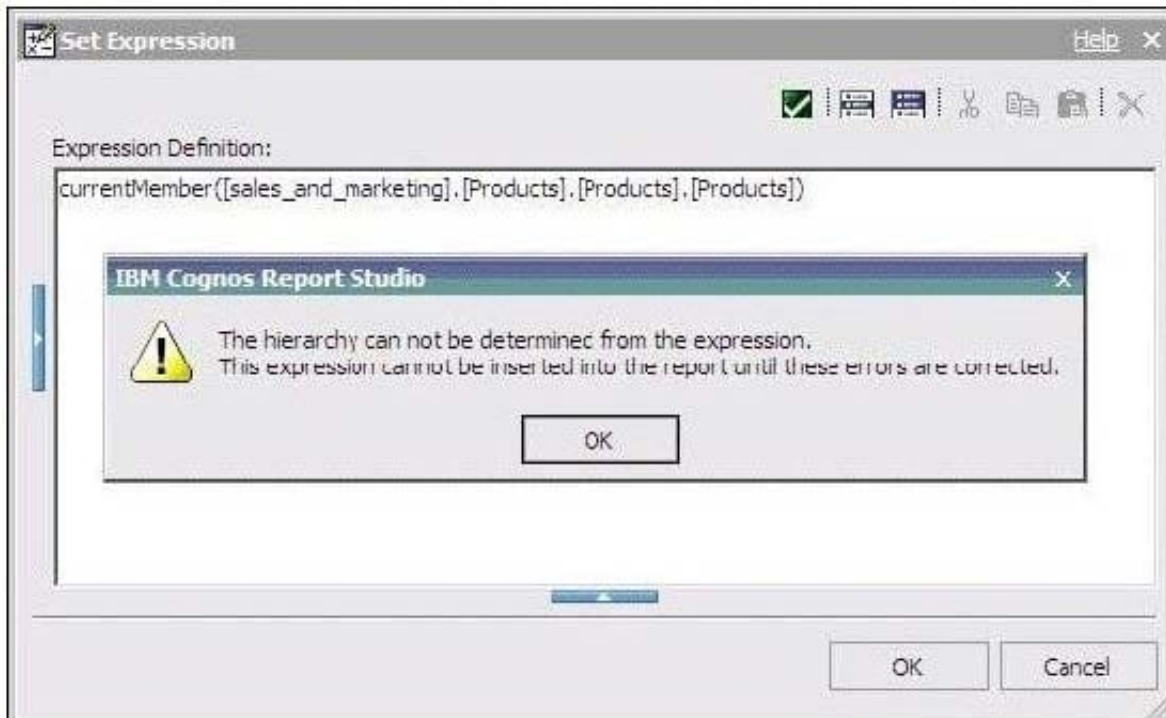
Which of the following statements describes the purpose of the expression?

- A. To return the set of members whose revenue is less than 150000000 for any year.
- B. To return the set of members whose revenue is greater than 150000000 for the sum of the opposite edge.
- C. To filter the cell values by subtracting 150000000 from the revenue for each year and order method type.
- D. To filter the years to show those having revenues greater than 150000000 by order method type.

Correct Answer: B

QUESTION 3

The dialog box shown appears when a report is run.



What should the report author do to correct the situation?

- A. Ask the modeler to rename the hierarchy to `\"[sales_and_marketing].[Products].[Products].[Products]\"`, and to republish the package.
- B. Modify the expression to change the `'currentMember'` function to `'currentLevel'`.
- C. Modify the expression to change the `'currentMember'` function to `'currentHierarchy'`.
- D. Modify the expression to `'currentMember([sales_and_marketing].[Products].[Products])'`.

Correct Answer: D

QUESTION 4

What is true about MUNs?

- A. A MUN is a business key that allows drill through between packages.
- B. A MUN is a key with a unique value at each level.
- C. A MUN contains the fully qualified path to a member.
- D. A MUN is a category code that is generated when the cube is built.

Correct Answer: C



QUESTION 5

If the syntax for the head function is head(set_exp[,index_exp]),then which of the following expressions is correct?

- A. head(members([sales_and_marketing].[Products].[Products].[Product line]),2)
- B. head(([sales_and_marketing].[Products].[Products].[Product line]),2)
- C. head(order([sales_and_marketing].[Products].[Products].[Product line])2)
- D. head(members([sales_and_marketing].[Products].[Products].[Product line],2))

Correct Answer: A

[C2090-645 VCE Dumps](#)

[C2090-645 Practice Test](#)

[C2090-645 Braindumps](#)