



C9550-275^{Q&As}

Blueworks Live IBM Business Process Manager Express or Standard Edition V8.0 BPM Analysis

Pass IBM C9550-275 Exam with 100% Guarantee

Free Download Real Questions & Answers **PDF** and **VCE** file from:

<https://www.geekcert.com/c9550-275.html>

100% Passing Guarantee
100% Money Back Assurance

Following Questions and Answers are all new published by IBM Official Exam Center

- ⚙️ **Instant Download** After Purchase
- ⚙️ **100% Money Back** Guarantee
- ⚙️ **365 Days** Free Update
- ⚙️ **800,000+** Satisfied Customers





QUESTION 1

A company needs to improve their hiring process using Business Process Management Software (BPMS). The BPM analyst has completed the current state process discovery and analysis by involving the business subject matter expert (SME) and is ready to define the future state process map. The BPM analyst anticipates many system integrations in the future state process. Who should the BPM analyst involve during the definition of the future state process?

A. 1. Process Owner

2.

Business subject matter experts

3.

BPMS Lead Developer

4.

Client's IT representative

B. 1. Project Manager

2.

Business subject matter experts

3.

BPMS Lead Developer

4.

Client's IT representative

C. 1. Process Owner

2.

Business subject matter experts

3.

BPMS Lead Developer

4.

Project Manager

D. 1. Process Owner

2.

Quality Assurance



3.

BPMS Lead Developer

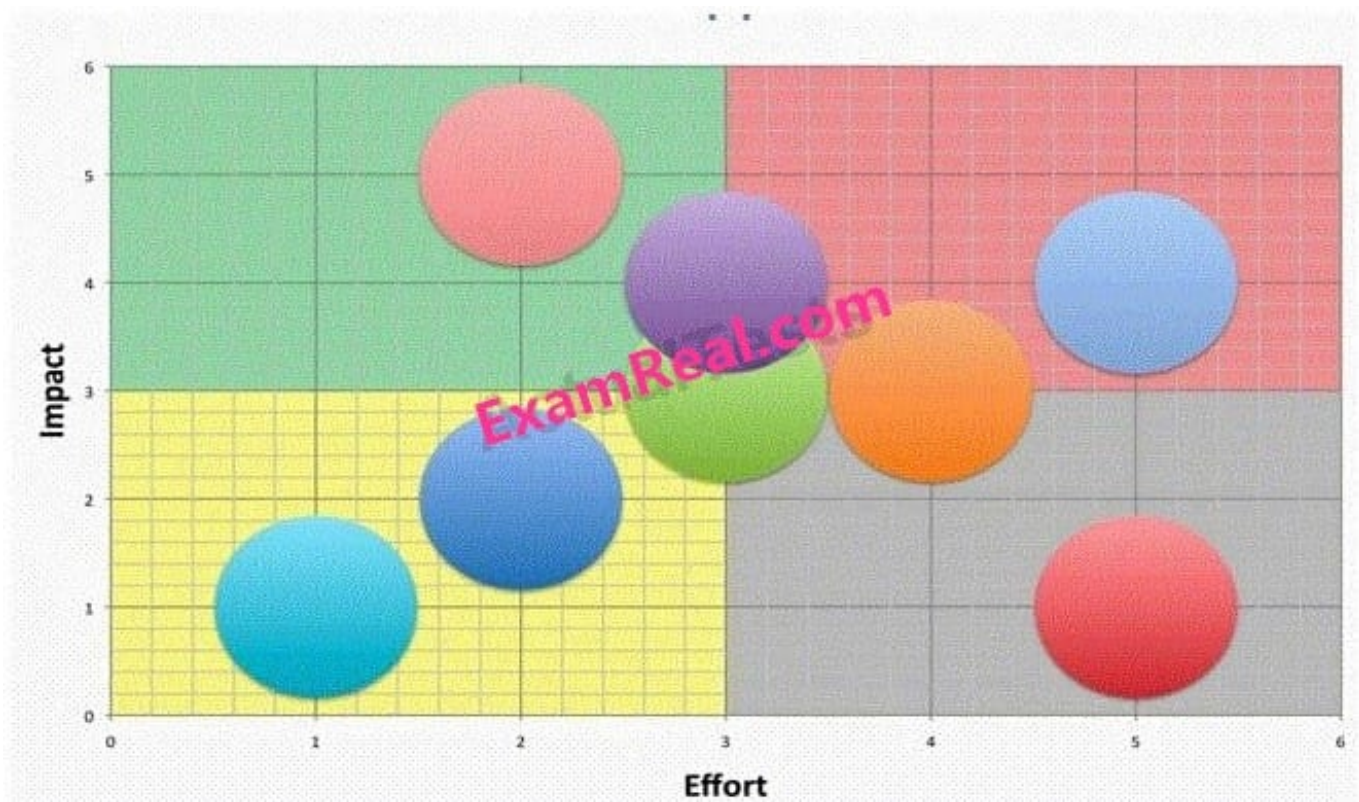
4.

Client\'s IT representative

Correct Answer: A

QUESTION 2

A company needs the BPM analyst to provide a business value and impact assessment to only proceed with processes that align with their corporate strategy. The company's corporate strategy is to begin with small quick win pilots that require low effort and low impact and then scale to large programs that are low effort and high impact.



In the exhibit below, which quadrants contain the processes the BPM analyst should recommend?

- A. Top right, top left
B. Top right, bottom right
C. Bottom right, top left
D. Bottom left, top left

Correct Answer: D

**QUESTION 3**

A BPM analyst is performing a process inventory analysis at a company that has many processes and has gathered all required information to calculate a priority value for each process in order to rank them. How should the BPM analyst compute this?

- A. Provide a scale and weight for each activity in the process.
- B. Provide a scale for each of the prioritization criterion and weigh the criteria against the processes.
- C. Have the customer and the BPM analyst provide 2 different priority values independently and calculate 1 priority value.
- D. Count the number of activities in diagram and evaluate the complexity of the diagram to provide a value and calculate a priority value.

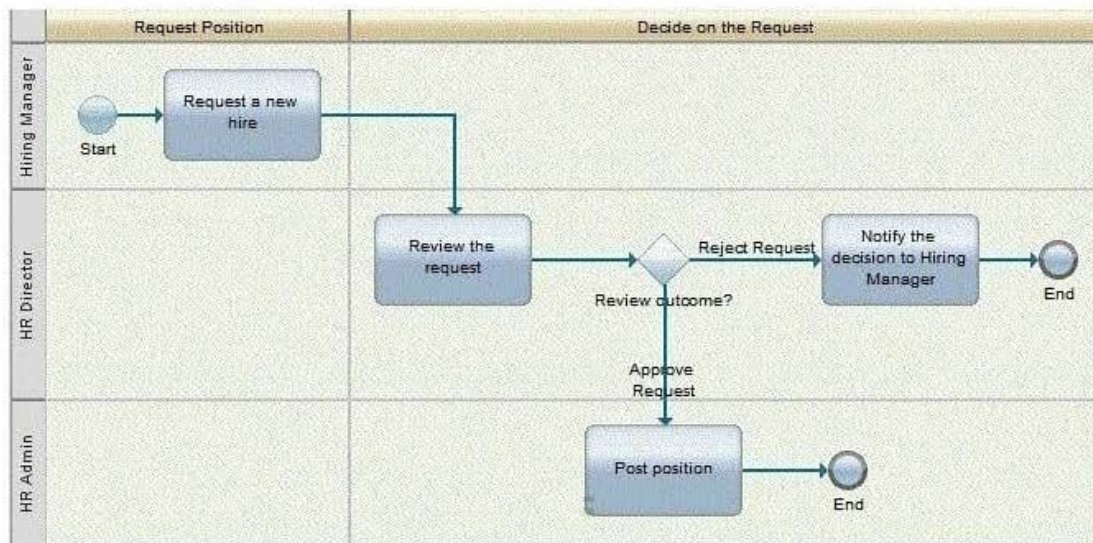
Correct Answer: B

QUESTION 4

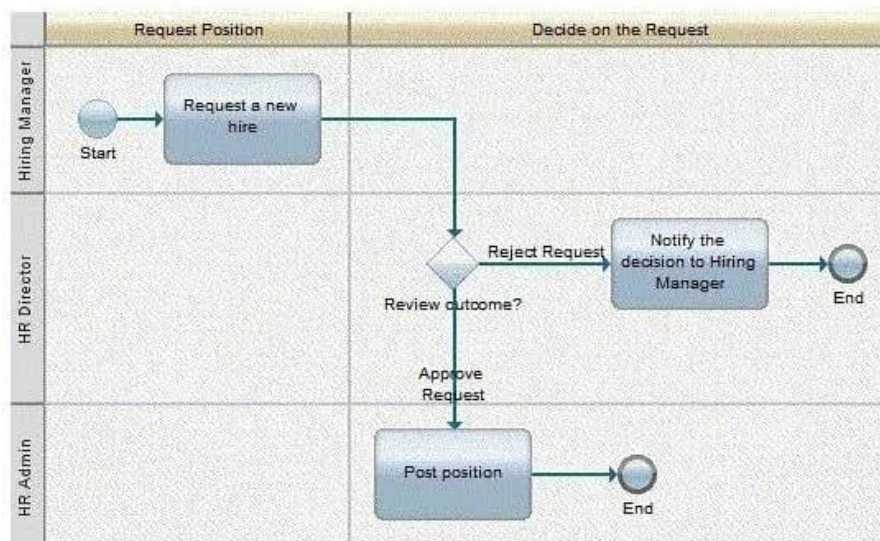
The BPM analyst is mapping a Recruiting process for a company where the Hiring manager submits a Hiring request and the HR Director makes the decision to approve or reject the request. If approved, the HR Admin will post the position in a job search website. If Rejected, the HR Director will notify the Hiring Manager. How should the BPM analyst map this process?



A.

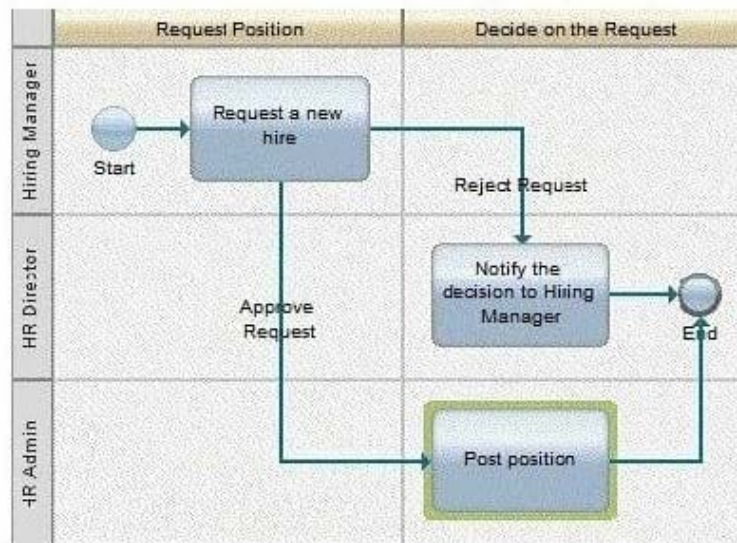


B.

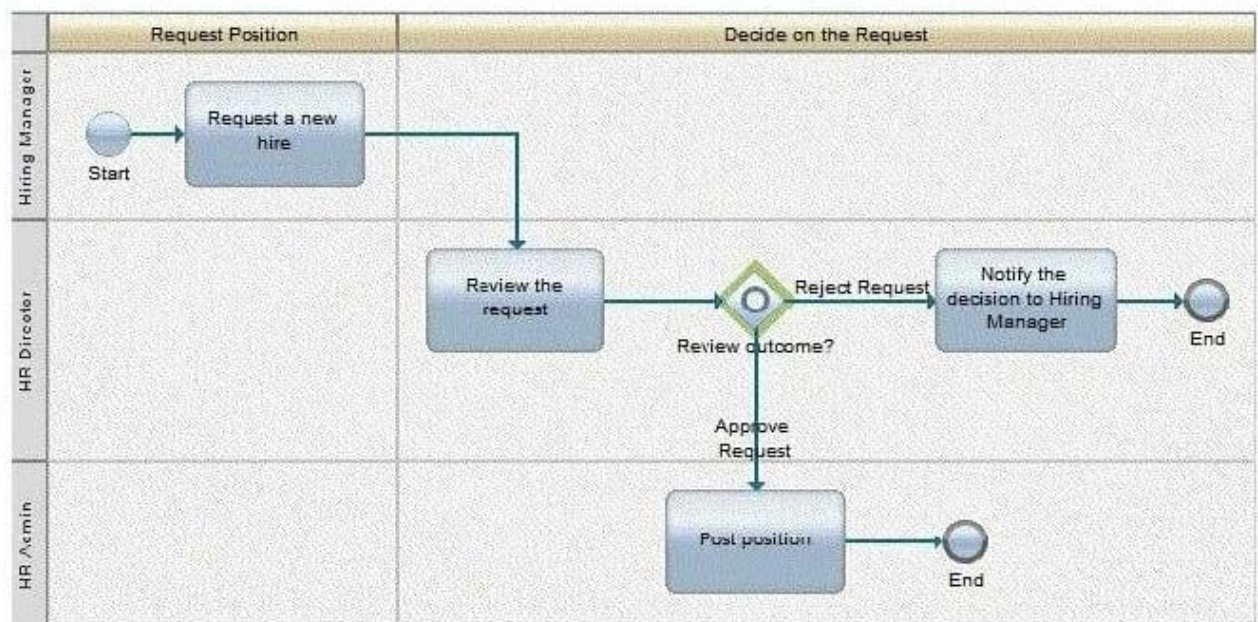




C.



D.



A. Exhibit A

B. Exhibit B

C. Exhibit C

D. Exhibit D

Correct Answer: A

QUESTION 5



The BPM analyst is recommending the playback methodology to be followed during development. When the company asks the analyst what is the basis for the playback methodology, how should the BPM analyst respond?

- A. Iterative development
- B. V-model development
- C. Waterfall development
- D. Cleanroom development

Correct Answer: A

[Latest C9550-275 Dumps](#)

[C9550-275 PDF Dumps](#)

[C9550-275 Study Guide](#)