



# C9550-605<sup>Q&As</sup>

IBM WebSphere Enterprise Service Bus V7.0 Integration Development

## Pass IBM C9550-605 Exam with 100% Guarantee

Free Download Real Questions & Answers **PDF** and **VCE** file from:

<https://www.geekcert.com/c9550-605.html>

100% Passing Guarantee  
100% Money Back Assurance

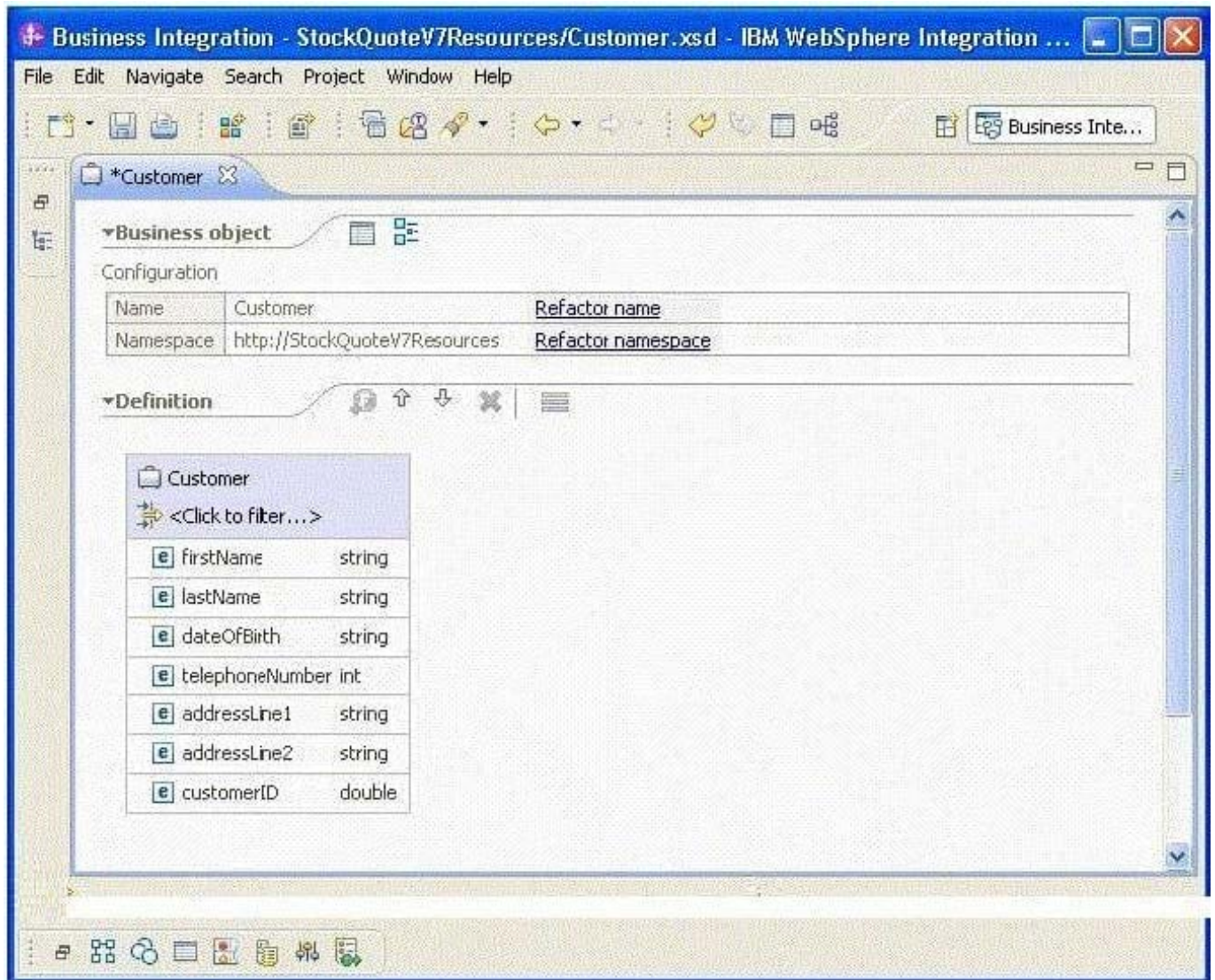
Following Questions and Answers are all new published by IBM Official Exam Center

- ⚙️ **Instant Download** After Purchase
- ⚙️ **100% Money Back** Guarantee
- ⚙️ **365 Days** Free Update
- ⚙️ **800,000+** Satisfied Customers



**QUESTION 1**

Refer to the Exhibit.



An integration developer implements a mediation flow with an interface containing the business object shown in the Exhibit. When the mediation flow is invoked by external applications, problems are occurring due to an application sending a non-numeric value for the customerID. How should the integration developer BEST proceed in order to improve the flow so that this problem is caught as early as possible?

- A. Use a Set Message Type primitive to correct the business object.
- B. Use a Data Handler primitive to handle the mismatch in data types.
- C. Use a Message Filter primitive to filter out the invalid business object.
- D. Use a Message Validator primitive to ensure the business object instance matches its schema.

Correct Answer: D



## QUESTION 2

Which type of interface is used by the WebSphere Adapters to transfer data between adapter components and WebSphere Enterprise Service Bus runtime?

- A. Java EE Connector Interface (JCI)
- B. Web Services Description Language (WSDL)
- C. Enterprise Metadata Discover/ Interface (EMDI)
- D. Data Exchange Service Provider Interface (DESPI)

Correct Answer: B

---

## QUESTION 3

An integration developer has been tasked to create a solution to process electronic invoices. The invoices must be sent through Web services with a swaRef-type attachment per the Web Services Interoperability Organization (WS-I) Attachment Profile 1.0. Which of the following is a required step in order to expose a module as a Web Service supporting the above technology?

- A. Add the predefined SwaRefLib in the library section of the dependency editor of the module.
- B. Add a custom interface with a field `\\attachment\\` to an export and when generating the WS binding select the `\\(WS-I) Attachment Profile 1.0 with swaRef\\` option.
- C. Select the `\\WS-I attachment profile 1.0 swaRef schema file\\` interface in the Predefined Resources section of the dependency editor of the module.
- D. Create a custom interface that follows the WS-I Attachment Profile 1.0 in a library and add it in the library section of the dependency editor of the module.

Correct Answer: C

---

## QUESTION 4

An integration developer is creating one or more test suites using WebSphere Integration Developer. What must be created before the developer can define the test suites?

- A. A test case
- B. A test library project
- C. A unit test project
- D. A component test project

Correct Answer: D

---



### QUESTION 5

A new version of a common business object currently defined in a shared library is required for a new mediation module. Which of the following should be done to ensure that older modules are not immediately affected by the change and both versions of the business object are available to all modules?

- A. Create the new version of the business object using a different name in the shared library.
- B. Create the new version of the business object using the same name in the new mediation module without modifying the shared library or the other mediation modules.
- C. Create the new version of the business object using a different name in the new mediation module without modifying the shared library or the other mediation modules.
- D. Move the old version of the common business object to each existing dependent mediation module, then create the new version of the business object in the new mediation module.

Correct Answer: A

[C9550-605 VCE Dumps](#)

[C9550-605 Practice Test](#)

[C9550-605 Study Guide](#)