



# DATA-ARCHITECTURE-AND- MANAGEMENT-DESIGNER<sup>Q&As</sup>

Salesforce Certified Data Architecture and Management Designer

**Pass Salesforce DATA-ARCHITECTURE-AND-  
MANAGEMENT-DESIGNER Exam with 100%  
Guarantee**

Free Download Real Questions & Answers **PDF** and **VCE** file from:

<https://www.geekcert.com/data-architecture-and-management-designer.html>

100% Passing Guarantee  
100% Money Back Assurance

Following Questions and Answers are all new published by Salesforce  
Official Exam Center



VCE & PDF

GeekCert.com

<https://www.geekcert.com/data-architecture-and-management-designer.htm>  
2024 Latest geekcert DATA-ARCHITECTURE-AND-MANAGEMENT-DESIGNER PDF and VCE dumps Download

- ⚙️ **Instant Download** After Purchase
- ⚙️ **100% Money Back** Guarantee
- ⚙️ **365 Days** Free Update
- ⚙️ **800,000+** Satisfied Customers





### QUESTION 1

Universal Containers (UC) is implementing a new customer categorization process where customers should be assigned to a Gold, Silver, or Bronze category if they've purchased UC's new support service. Customers are expected to be evenly distributed across all three categories. Currently, UC has around 500,000 customers, and is expecting 1% of existing non-categorized customers to purchase UC's new support service every month over the next five years. What is the recommended solution to ensure longterm performance, bearing in mind the above requirements?

- A. Implement a new global picklist custom field with Gold, Silver, and Bronze values and enable it in Account.
- B. Implement a new picklist custom field in the Account object with Gold, Silver, and Bronze values.
- C. Implement a new Categories custom object and a master-detail relationship from Account to Category.
- D. Implement a new Categories custom object and create a lookup field from Account to Category.

Correct Answer: B

### QUESTION 2

A large retail company has recently chosen Salesforce as its CRM solution. They have the following record counts:

1.  
2,500,000 Accounts
2.  
25,000,000 Contacts

When doing an initial performance test, the data architect noticed an extremely slow response for reports and list views.

What should a data architect do to solve the performance issues?

- A. Load only the data that the users is permitted to access
- B. Add custom indexes on frequently searched account and contact objects fields
- C. Limit data loading to the 2000 most recently created records.
- D. Create a skinny table to represent account and contact objects.

Correct Answer: C

### QUESTION 3



---

Universal Containers has a large number of Opportunity fields (100) that they want to track field history on.

Which two actions should an architect perform in order to meet this requirement? Choose 2 answers

- A. Create a custom object to store a copy of the record when changed.
- B. Create a custom object to store the previous and new field values.
- C. Use Analytic Snapshots to store a copy of the record when changed.
- D. Select the 100 fields in the Opportunity Set History Tracking page.

Correct Answer: AB

---

#### QUESTION 4

Developers at Universal Containers need to build a report for the business which displays Accounts opened in the past year grouped by industry. This report will also include information from contacts, opportunities, and orders. There are several million Accounts in the system. Which two options should be recommended to make this report perform well and satisfy the business need?

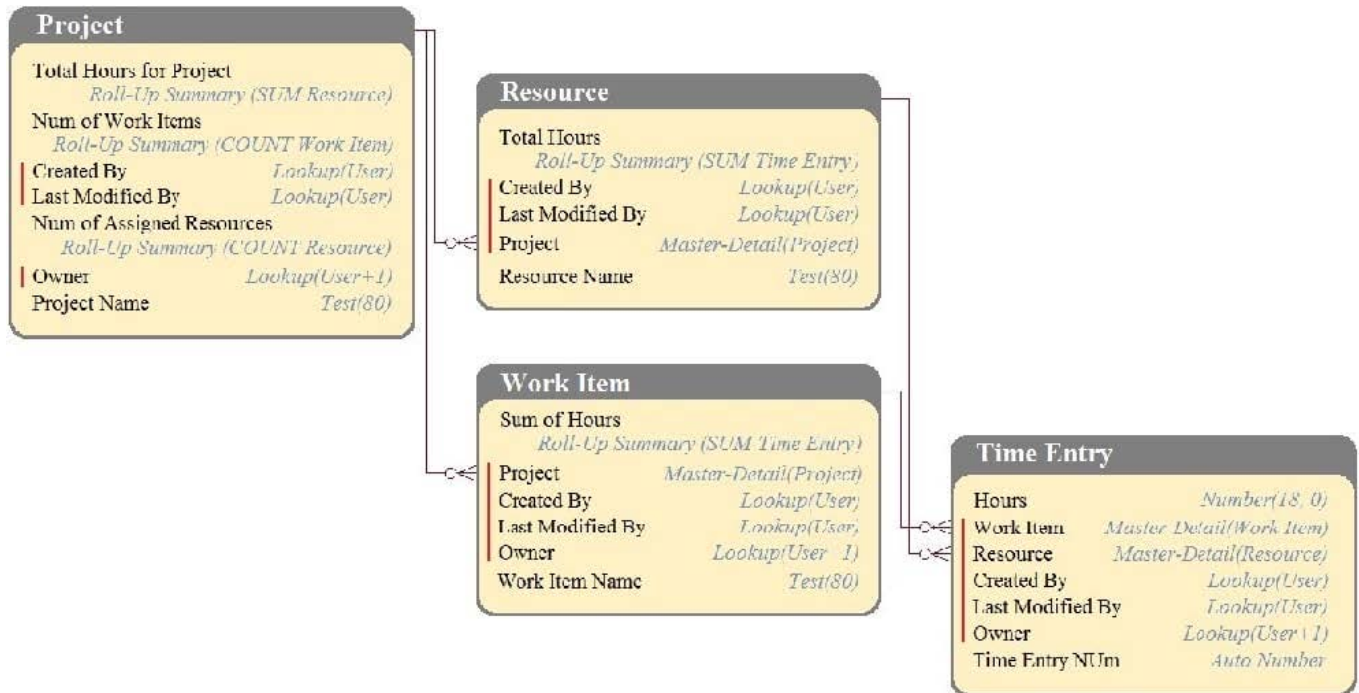
- A. Use triggers to populate denormalized related fields on the Account.
- B. Use an indexed data field with bounded data filters.
- C. Use Formula fields to surface information I related entities on the report.
- D. Use unbounded date ranges to filter the report.

Correct Answer: BD

---

#### QUESTION 5

DreamHouse Realty has a data model as shown in the image. The Project object has a private sharing model, and it has Roll-Up summary fields to calculate the number of resources assigned to the project, total hours for the project, and the number of work items associated to the project. There will be a large amount of time entry records to be loaded regularly from an external system into Salesforce.



What should the Architect consider in this situation?

- A. Load all data after deferring sharing calculations.
- B. Calculate summary values instead of Roll-Up by using workflow.
- C. Calculate summary values instead of Roll-Up by using triggers.
- D. Load all data using external IDs to link to parent records.

Correct Answer: A

[DATA-ARCHITECTURE-AND-MANAGEMENT-DESIGNER PDF Dumps](#)

[DATA-ARCHITECTURE-AND-MANAGEMENT-DESIGNER VCE Dumps](#)

[DATA-ARCHITECTURE-AND-MANAGEMENT-DESIGNER Study Guide](#)