



# DCPPE-200<sup>Q&As</sup>

Dell PowerEdge Professional Exam

**Pass Dell DCPPE-200 Exam with 100% Guarantee**

Free Download Real Questions & Answers **PDF** and **VCE** file from:

<https://www.geekcert.com/dcppe-200.html>

100% Passing Guarantee  
100% Money Back Assurance

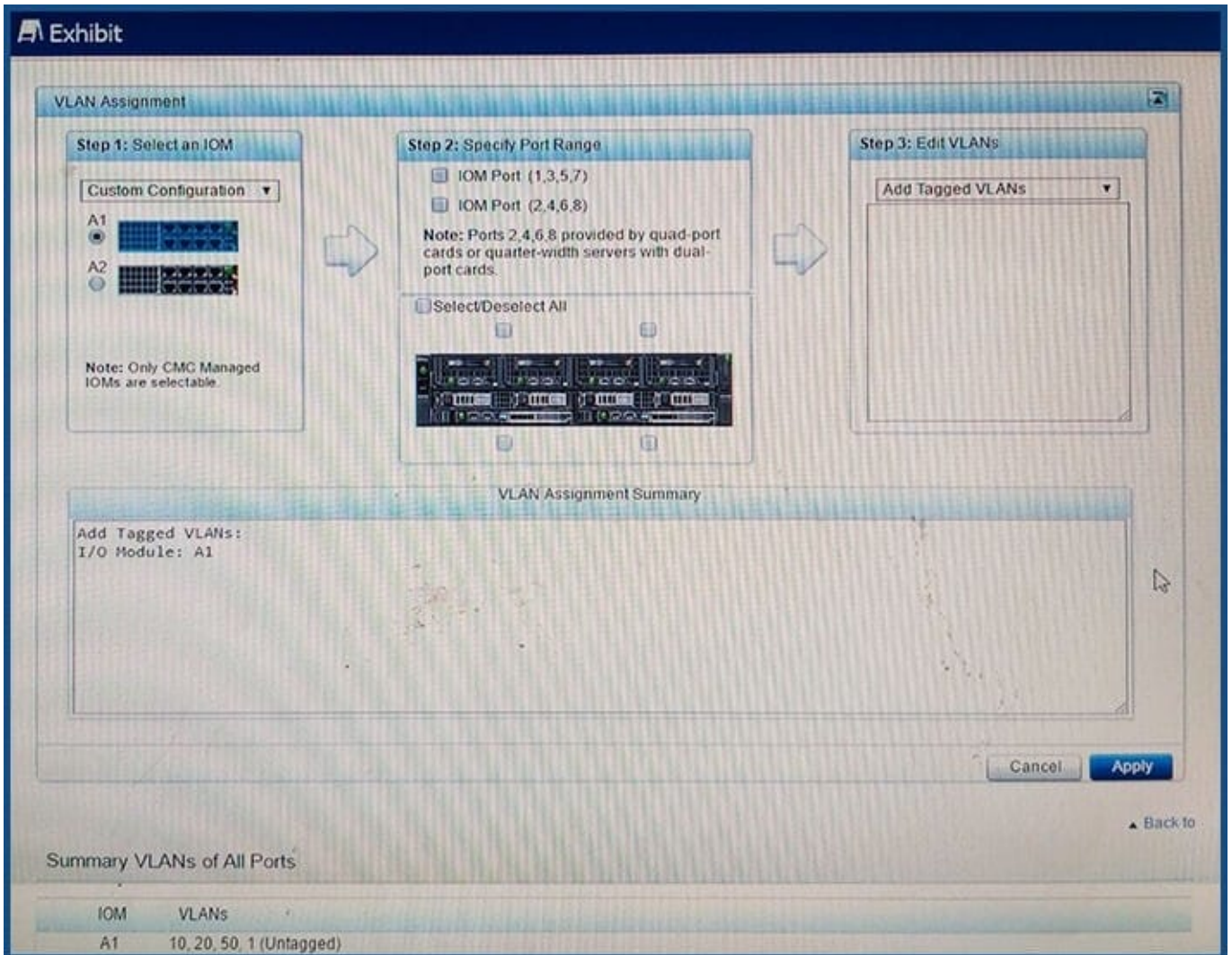
Following Questions and Answers are all new published by Dell Official Exam Center

-  **Instant Download** After Purchase
-  **100% Money Back** Guarantee
-  **365 Days** Free Update
-  **800,000+** Satisfied Customers





QUESTION 1



Refer to the exhibit.

An engineer is configuring an I/O Aggregator (IOA) for use on a network that has VLANs. The IOA in SLOT A2 is NOT being used currently.

All blades appear to communicate on the network EXCEPT for blades 1b and 1d.

What does the engineer need to do so that blades 1b and 1d can communicate?

- A. Install additional network cables for the IOA in A1
- B. Add IOM Ports 2, 4,6, and 8 to the VLANs
- C. Set VLANs 10, 20, and 50 to untagged for all ports
- D. Configure IOA in A2 for all blades.



---

Correct Answer: B

---

### QUESTION 2

An engineer responsible for server lifecycle management (e.g. Monitor, Update, Deploy) needs to build a monitoring strategy for a multi-vendor data center. The company has an established third party software as the monitoring and help desk system.

Which option should be used to integrate Dell Server hardware into this monitoring architecture?

- A. Configure all Dell iDRACs to send alerts to the third party console. Use OME to do the rest of the lifecycle management.
- B. Configure all Dell iDRACs to send alerts to the third party console. Use iDRAC to perform update and deployment.
- C. Configure all Dell iDRACs to send alerts to OME to filter out wanted alerts and forward to the third party console. Build script to do the rest of the Dell server lifecycle management.
- D. Configure all Dell iDRACs to send alerts to OME to filter out wanted alerts and forward to the third party console. Use OME to do lifecycle management of Dell servers in the environment.

Correct Answer: D

---

### QUESTION 3

An engineer has connected a monitor, keyboard, and mouse to a VRTX chassis. The engineer is unable to see or control the first blade.

What must the engineer do to control the first blade with a connected monitor, keyboard, and mouse?

- A. Map the KVM to the first blade in the Front Panel menu of the CMC.
- B. Plug the monitor, keyboard, and mouse into the back of the chassis.
- C. Enable the KVM for the chassis and navigate to the first blade.
- D. Reseat the module that manages access to the monitor, keyboard and mouse.

Correct Answer: C

---

### QUESTION 4

An engineer is installing an M1000e chassis and connecting it to the network in the top of rack (ToR) switch. The entire company's infrastructure is on a single subnet configured as follows.

-IPs 10.0.1.0/24

-Gateway 10.0.1.1

-DNS 10.0.1.3



-DHCP10.0.1.4

-OS IPs10.0.1.10-99

The engineer configures the CMC to use IP 10.0.1.100 and the iDRACs to use the next 16 IPs.

The customer notices the CMC and the iDRAC are having intermittent connectivity issues. The following troubleshooting steps have been completed:

-Replaced cables from CMCs to ToR

-Failed over CMC

-Configured and tried different ports in ToR

-

Connected the laptop directly to the CMC

Direct connection to the CMC does NOT show any connectivity issues.

What should be done to fix the connectivity issues?

A.

Create DHCP reservations for IP range 100-116

B.

Separate the management network from the production network

C.

Register CMC and iDRAC host named in DNS

D.

Configure a LAG for the CMCs ports to increase bandwidth

Correct Answer: C

---

## QUESTION 5

An engineer is redeploying a blade chassis, and is logged into the CMC web interface. The engineer has configured the iDRACs for the blade servers.

When the engineer tries to log into one of the iDRACs, the connection fails. The engineer can ping the CMC from the engineer's workstation but can NOT ping the iDRACs. The engineer tries to ping the iDRAC IP from the CMC itself using the diagnostic tool, but that also fails.

Which two tasks should the engineer perform? (Choose two.)

A. Check VLAN settings on the CMC and iDRAC



- B. Disable firewall service on iDRAC
- C. Enable IPv6 on the CMC and iDRAC
- D. Confirm subnet mask configuration on iDRAC
- E. Update DNS servers for iDRAC

Correct Answer: BD

[DCPPE-200 VCE Dumps](#)

[DCPPE-200 Study Guide](#)

[DCPPE-200 Exam Questions](#)