



DES-4122^{Q&As}

Specialist - Implementation Engineer PowerEdge Version 2.0

Pass EMC DES-4122 Exam with 100% Guarantee

Free Download Real Questions & Answers **PDF** and **VCE** file from:

<https://www.geekcert.com/des-4122.html>

100% Passing Guarantee
100% Money Back Assurance

Following Questions and Answers are all new published by EMC
Official Exam Center

-  **Instant Download** After Purchase
-  **100% Money Back** Guarantee
-  **365 Days** Free Update
-  **800,000+** Satisfied Customers

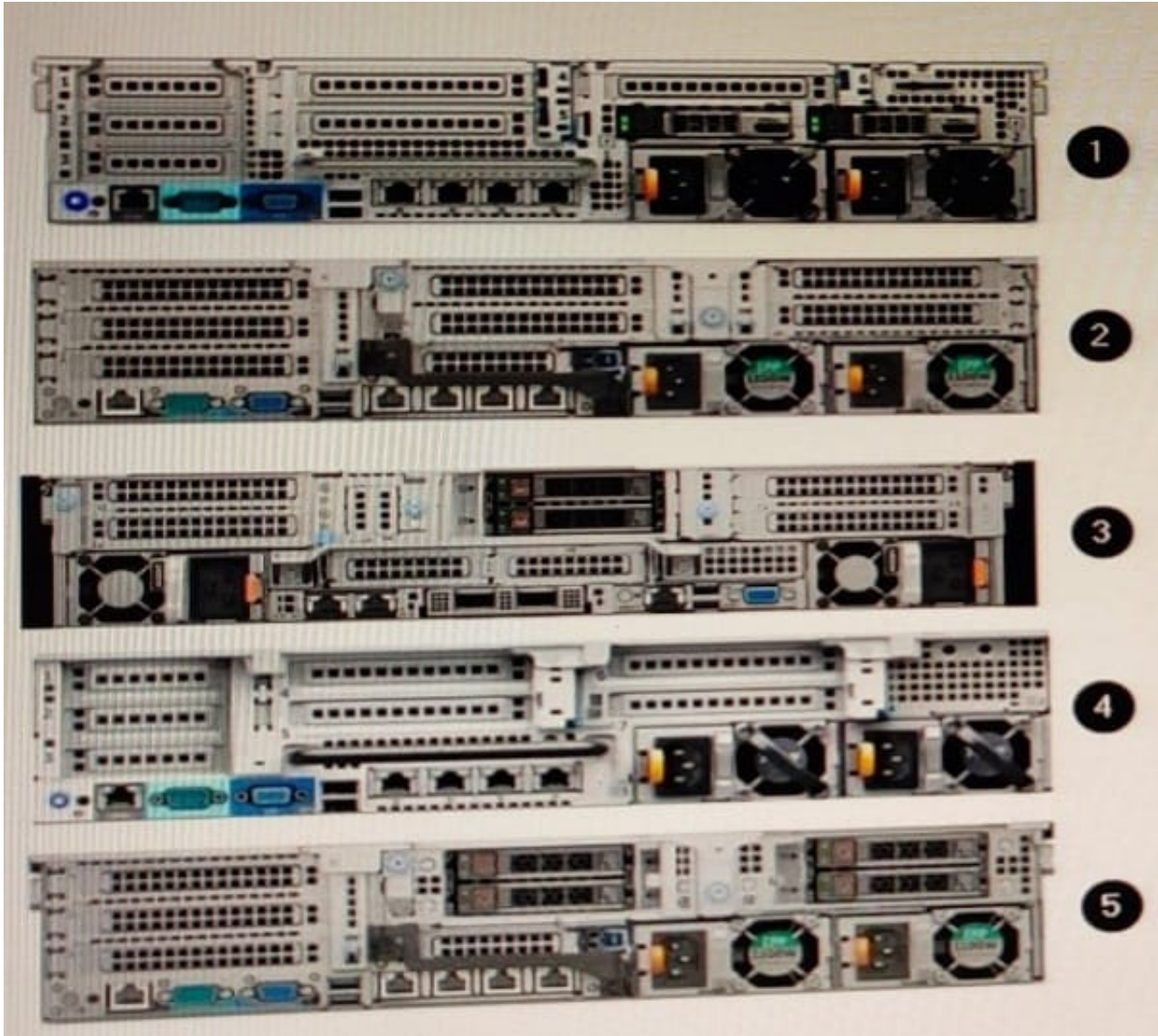




QUESTION 1

DRAG DROP

Refer to the exhibit.



Match each callout to the Dell EMC PowerEdge server model shown.

Select and Place:



Callout	Model
3	R730xd
5	R740
1	R7525
4	R730
2	R740xd

Correct Answer:

Callout	Model
	4
	5
	3
	1
	2

QUESTION 2

How can a technician know whether iDRAC9 System Lockdown mode is enabled?

- A. Lockdown activation message in red box in the iDRAC web GUI Access to LCC is disabled when the server boots
- B. Lockdown activation message in red box in the iDRAC web GUI Access to LCC requires a password when the server boots
- C. Lockdown activation message in yellow box in the iDRAC web GUI Access to LCC is disabled when the server boots
- D. Lockdown activation message in yellow box in the iDRAC web GUI Access to LCC requires a password when the server boots

Correct Answer: A



QUESTION 3

When does a customer require the Service Tag of the Dell EMC PowerEdge server?

- A. First time logging in to iDRAC
- B. First time accessing the BIOS
- C. Activating the OS
- D. Obtaining warranty information

Correct Answer: A

QUESTION 4

DRAG DROP

Match each status LED indicator on the Dell EMC 14G PowerEdge server with its corresponding condition.

Select and Place:

Indicator	Condition
Memory	Error related to the RAID array
Temperature	Failed power supply
Drive	System cover is removed
PCIe	Memory error
Electrical	Required drivers for the PCIe card

Correct Answer:

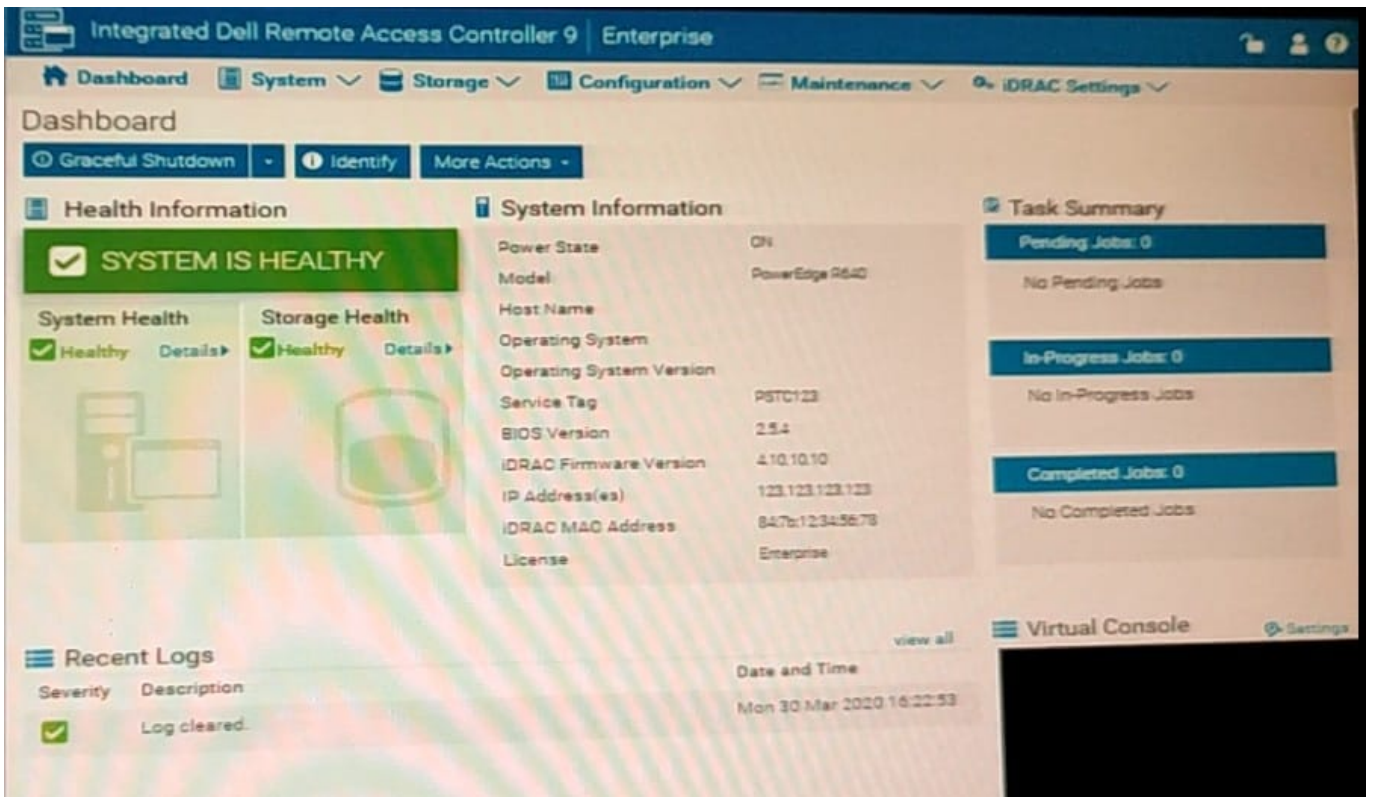


Indicator	Condition
	Drive
	Electrical
	Temperature
	Memory
	PCIe

QUESTION 5

CORRECT TEXT

For security reasons, the Dell EMC PowerEdge server power button must be disabled. Use the System Setup Utility in the simulator to disable the power button. When you have finished using the simulator, click Next.



- A. No answer
- B. Place Holder



C. Place Holder

D. Place Holder

Correct Answer: A

[DES-4122 Study Guide](#)

[DES-4122 Exam Questions](#)

[DES-4122 Braindumps](#)