



DES-5121^{Q&As}

Specialist - Implementation Engineer - Campus Networking Exam

Pass EMC DES-5121 Exam with 100% Guarantee

Free Download Real Questions & Answers **PDF** and **VCE** file from:

<https://www.geekcert.com/des-5121.html>

100% Passing Guarantee
100% Money Back Assurance

Following Questions and Answers are all new published by EMC
Official Exam Center

- ⚙️ **Instant Download** After Purchase
- ⚙️ **100% Money Back** Guarantee
- ⚙️ **365 Days** Free Update
- ⚙️ **800,000+** Satisfied Customers

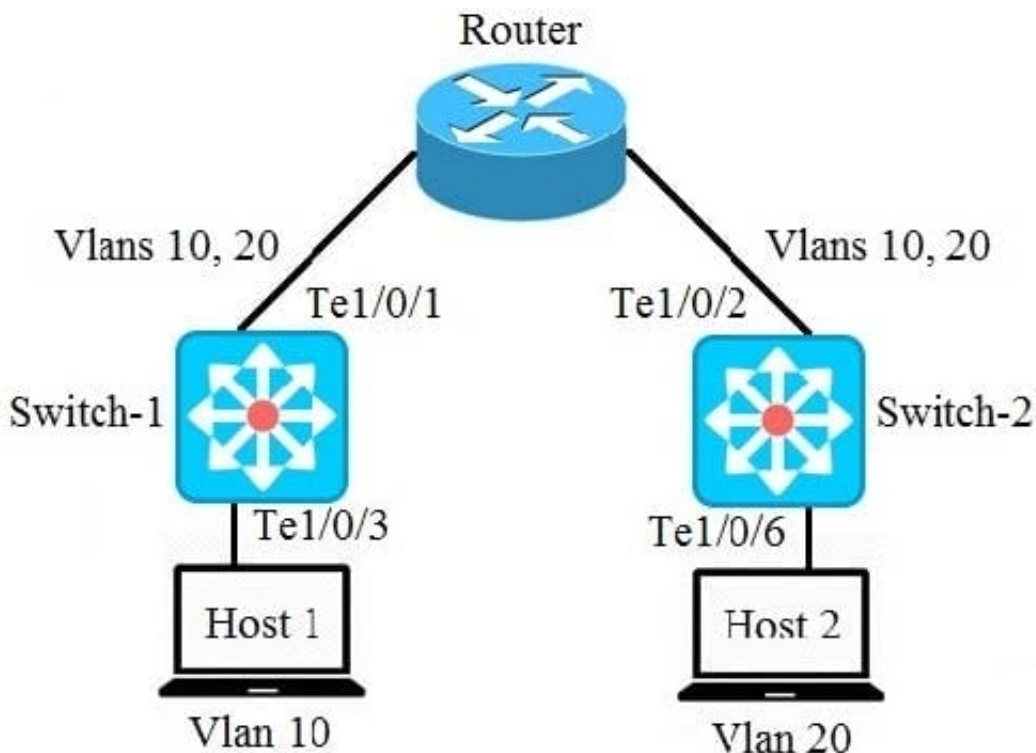




QUESTION 1

```
Switch-1(config)# interface tengigabitethernet 1/0/1 Switch-1(config)# switchport mode access Switch-1(config)# switchport trunk allowed vlan 10, 20 Switch-1(config)# Switch-1(config)# interface tengigabitethernet 1/0/3 Switch-1(config)# switchport mode access Switch-1(config)# switchport access vlan 10
```

```
Switch-2(config)# interface tengigabitethernet 1/0/2 Switch-2(config)# switchport mode trunk Switch-2(config)# switchport trunk allowed vlan 10, 20 Switch-2(config)# Switch-2(config)# interface tengigabitethernet 1/0/6 Switch-2(config)# switchport mode access Switch-2(config)# switchport access vlan 20
```



A network administrator is troubleshooting why Host 1 cannot communicate with Host 2.

Based on the switch output shown in the exhibit, what is the reason for the communication issue?

- A. Port Te1/0/1 on Switch-1 is configured incorrectly
- B. Port Te1/0/2 on Switch-2 is configured incorrectly
- C. Port Te1/0/3 for Host 1 is configured incorrectly on Switch-1
- D. Port Te1/0/6 for Host 2 is configured incorrectly on Switch-2

Correct Answer: A

QUESTION 2

A user's workstation is connected to an IP phone that is connected to a Dell EMC N-Series switch. Which type of traffic is typically tagged or untagged?



- A. Data = tagged, Voice = untagged
- B. Data = untagged, Voice = untagged
- C. Data = tagged, Voice = tagged
- D. Data = untagged, Voice = tagged

Correct Answer: D

Reference: <https://www.dell.com/support/article/en-us/how12385/how-to-enable-the-voice-vlan-feature-on-dell-emc-networking-n-series-switches?lang=en>

QUESTION 3

A network administrator added a new Dell EMC N-Series switch into their network with RSTP configured. The spanning-tree priority on all existing switches has been left at the default value. If the administrator wants this new switch to become the spanning tree root, which command should be used?

- A. spanning-tree priority 4096
- B. spanning-tree priority 32768
- C. spanning-tree priority 36864
- D. spanning-tree priority 61440

Correct Answer: A

Reference: <https://www.dell.com/support/article/en-us/how10394/how-to-manage-rapid-spanning-tree-rstp-thru-command-line-on-dell-networking-powerconnect-switches?lang=en>

QUESTION 4

Which Layer 3 protocol does MLAG support?

- A. None
- B. Static Routing
- C. OSPF
- D. RIPv2

Correct Answer: A

Reference: http://files.rakurs.su/IT/Kommytatory/Dell/N4000/powerconnect_nx00-usingmlag-whtppr_en-us.pdf

QUESTION 5

A network administrator is setting up several stacks in their network that includes different Dell EMC N-Series models.



Which N-Series switch models require mini-SAS stacking cables?

- A. N1100 and N1500
- B. N1500 and N3000
- C. N2000 and N3000
- D. N3000 and N4000

Correct Answer: C

Reference:

<https://cdn.cnetcontent.com/syndication/mediaserverredirect/c1ddae5629f69c40c5da9c0d36cb045f/original.pdf>

[DES-5121 VCE Dumps](#)

[DES-5121 Study Guide](#)

[DES-5121 Exam Questions](#)