



# DES-6321<sup>Q&As</sup>

Specialist - Implementation Engineer - VxRail Appliance Exam

**Pass EMC DES-6321 Exam with 100% Guarantee**

Free Download Real Questions & Answers **PDF** and **VCE** file from:

<https://www.geekcert.com/des-6321.html>

100% Passing Guarantee  
100% Money Back Assurance

Following Questions and Answers are all new published by EMC  
Official Exam Center

- ⚙️ **Instant Download** After Purchase
- ⚙️ **100% Money Back** Guarantee
- ⚙️ **365 Days** Free Update
- ⚙️ **800,000+** Satisfied Customers





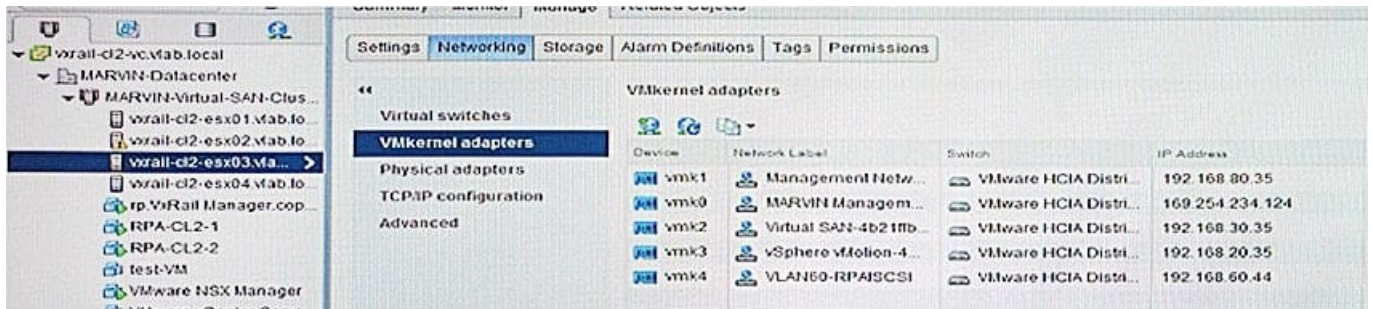
### QUESTION 1

After initial installation the vSAN health check is reporting issues. Which action needs to be taken to correct the vSAN health check error?

- A. Upgrade to the latest version of VxRail.
- B. Upgrade to the latest driver version.
- C. Reset error message to green.
- D. Update HCL database and run health check.

Correct Answer: B

### QUESTION 2



Based on the exhibit, what is the correct IP address to use when resetting a G Series node with the reset script?

- A. 169.254.234.124
- B. 192.168.20.35
- C. 192.168.30.35
- D. 192.168.80.35

Correct Answer: A

### QUESTION 3

What is a requirement for Top-of-Rack (ToR) switches when deploying a VxRail cluster?

- A. Must be manufactured by Dell, Cisco, or Brocade
- B. Must support IPv6 Multicast
- C. Must have two switches in the cluster
- D. Must support 25GbE connectivity



Correct Answer: B

---

#### QUESTION 4

How many nodes can be added simultaneously to an existing VxRail Cluster?

- A. 1
- B. 2
- C. 4
- D. 6

Correct Answer: D

---

#### QUESTION 5

A Dell EMC solutions architect has converted the VxRail PEQ to Customer Mode. They have engaged with the customer to input information about the VxRail networks, IP address, subnet mask, gateway, and VLAN ID details.

In which section would the customer input this information?

- A. System Information
- B. Virtual Machines
- C. Physical Network
- D. ESXi Host Details

Correct Answer: D

[DES-6321 VCE Dumps](#)

[DES-6321 Exam Questions](#)

[DES-6321 Braindumps](#)