



E20-393^{Q&As}

Unity Solutions Specialist Exam for Implementation Engineers

Pass EMC E20-393 Exam with 100% Guarantee

Free Download Real Questions & Answers **PDF** and **VCE** file from:

<https://www.geekcert.com/e20-393.html>

100% Passing Guarantee
100% Money Back Assurance

Following Questions and Answers are all new published by EMC
Official Exam Center

-  **Instant Download** After Purchase
-  **100% Money Back** Guarantee
-  **365 Days** Free Update
-  **800,000+** Satisfied Customers





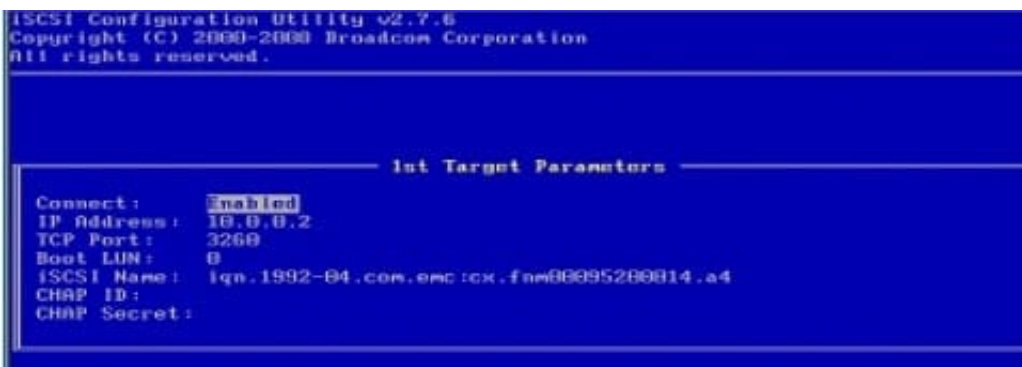
QUESTION 1

A storage administrator is creating a host profile in Unisphere to provide host access to block storage resources using the iSCSI protocol. The host initiators were not automatically discovered and must be manually added. In addition to the SAN host IQN, what other configuration can be performed through the "Create iSCSI Initiator Wizard" window?

- A. Enable and disable CHAP settings
- B. Create Mutual CHAP secret
- C. Create Global CHAP secret
- D. Enter CHAP username and secret

Correct Answer: D

A sample from a Broadcom BIOS is provided in the figure below, illustrating the IQN assignment for the VNX iSCSI target.



References: <https://www.emc.com/collateral/hardware/technical-documentation/h8229-vnx-vmware-tb.pdf> (page 34)

QUESTION 2

For high availability within iSCSI, connections should be attached using what?

- A. Different subnets
- B. Flow control
- C. Twinax cables
- D. Jumbo frames

Correct Answer: A

QUESTION 3

DRAG DROP



What is the correct order of steps to attach a snapshot to a host?

Select and Place:

Select hosts	Step 1
Select access type	Step 2
Select the snapshot	Step 3
System optionally creates copy of snapshot	Step 4

Correct Answer:

	Select access type
	Select hosts
	Select the snapshot
	System optionally creates copy of snapshot

Reference: <https://community.emc.com/docs/DOC-66549>

QUESTION 4

What is a connectivity rule for a host that connects to multiple Dell EMC Unity systems?

- A. Host must connect to all the arrays using a single protocol
- B. Host can connect to different arrays with different protocols
- C. iSCSI protocol is required to connect a host to multiple arrays
- D. CNA connections to host must be used with alternating protocols

Correct Answer: B

QUESTION 5



A storage administrator configured a Hybrid Dell EMC Unity XT storage system using one default port containing three disk types. They need additional Flash capacity. What is the correct way to expand the pool?

- A. Add a RAID Group of SAS Flash 4 drives to the pool
- B. Add 2 SAS Flash drives to the FAST Cache
- C. Add 1 SAS Flash drive to the pool
- D. Add a RAID Group of SAS Flash drives to the pool

Correct Answer: A

[E20-393 PDF Dumps](#)

[E20-393 VCE Dumps](#)

[E20-393 Practice Test](#)