



# FBA15<sup>Q&As</sup>

BCS Foundation Certificate in Business Analysis

## Pass BCS FBA15 Exam with 100% Guarantee

Free Download Real Questions & Answers **PDF** and **VCE** file from:

<https://www.geekcert.com/fba15.html>

100% Passing Guarantee  
100% Money Back Assurance

Following Questions and Answers are all new published by BCS Official Exam Center

-  **Instant Download** After Purchase
-  **100% Money Back** Guarantee
-  **365 Days** Free Update
-  **800,000+** Satisfied Customers





### QUESTION 1

Which category of activities should be identified first when developing a 'Business Activity Model' (BAM)?

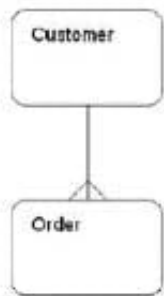
- A. Enabling.
- B. Planning.
- C. Doing.
- D. Monitoring.

Correct Answer: C

---

### QUESTION 2

The entity relationship model below shows the relationship between Customer and Order. Which of the following business rules is correct?



- A. An order may be placed by many customers.
- B. A customer may place many orders.
- C. A customer may never place an order.
- D. An order need not be placed by a customer.

Correct Answer: B

---

### QUESTION 3

Which of the following terms may be used to describe the attitude of a stakeholder who is NOT in favour of the project but is probably not actively opposed to it?

- A. Opponent.
- B. Neutral.
- C. Critic.



D. Blocker.

Correct Answer: C

---

#### QUESTION 4

Who is the target of the value proposition?

A. The supplier,

B. The sponsor.

C. The Customer.

D. The Competitor.

Correct Answer: C

---

#### QUESTION 5

Which stage in the waterfall model is considered as several separate stages in the V model?

A. Development.

B. Analysis.

C. Testing.

D. Design.

Correct Answer: C

---

[FBA15 VCE Dumps](#)

[FBA15 Study Guide](#)

[FBA15 Braindumps](#)