



# H12-261<sup>Q&As</sup>

HCIE-Routing & Switching (Written) V3.0

**Pass Huawei H12-261 Exam with 100% Guarantee**

Free Download Real Questions & Answers **PDF** and **VCE** file from:

<https://www.geekcert.com/h12-261.html>

100% Passing Guarantee  
100% Money Back Assurance

Following Questions and Answers are all new published by Huawei  
Official Exam Center

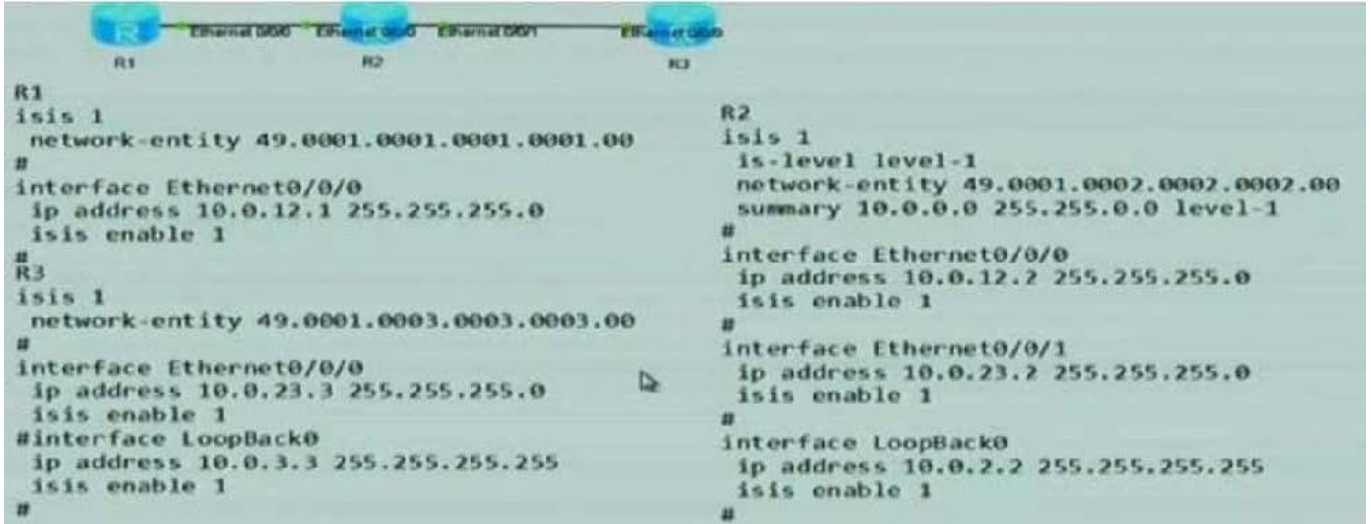
-  **Instant Download** After Purchase
-  **100% Money Back** Guarantee
-  **365 Days** Free Update
-  **800,000+** Satisfied Customers





### QUESTION 1

The following topology is available, and according to this analysis, the following method is correct:



- A. Because R2 R1 IP 10.0.0.0/16 does route aggregation, only the routing entries exist in the routing table.
- B. R1 IP 10.0.2.2/32 The routing entries with and in the routing table of 10.0.3.3/32
- C. R1 IP 10.0.3.3/32 Routing entries in the routing table of 10.0.0.0/16 with the same and
- D. R1 IP 10.0.2.2/32 The routing entry with and in the routing table of 10.0.0.0/16

Correct Answer: C

### QUESTION 2

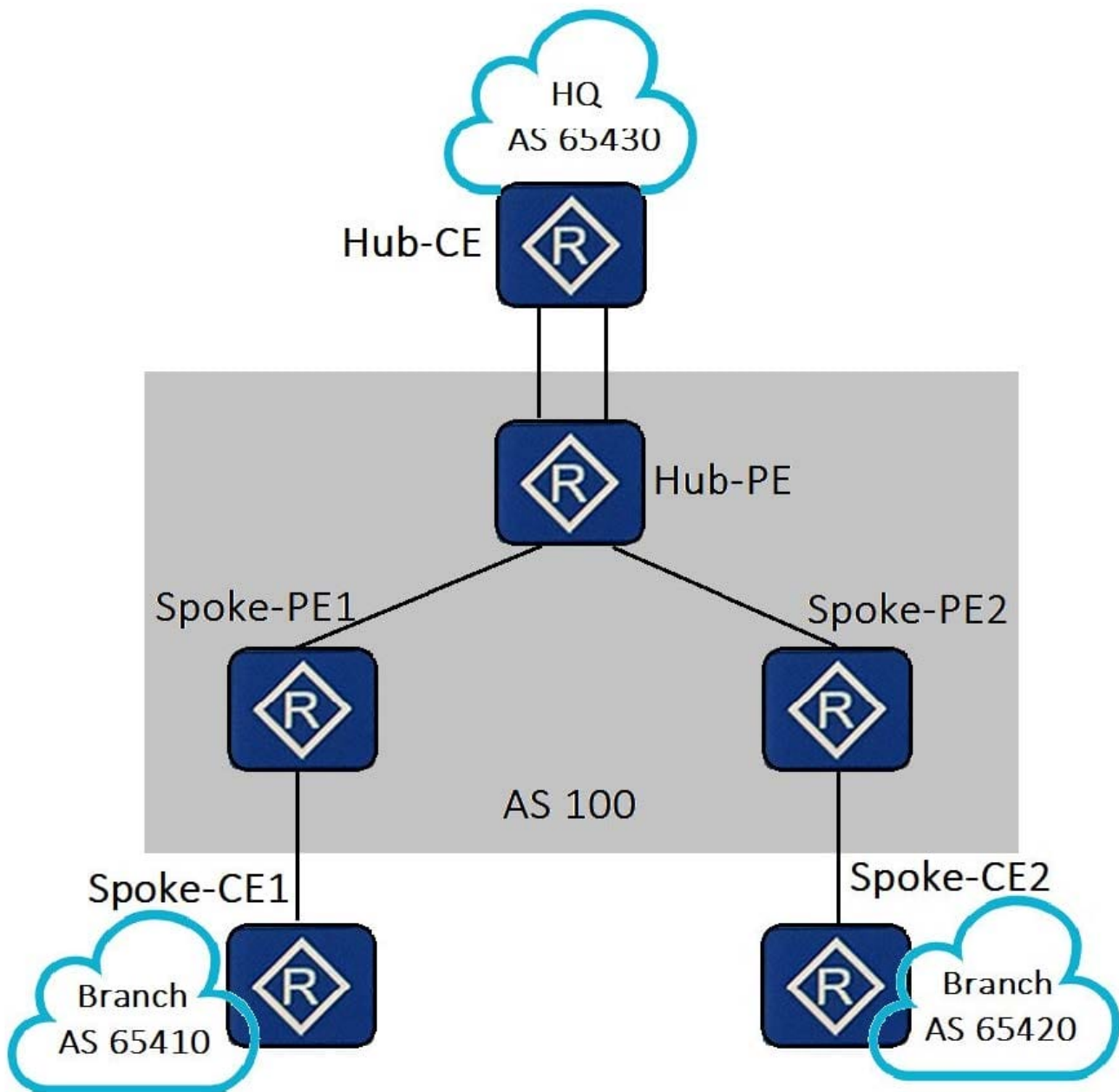
A BGP connection goes down after being successfully set up. What is not possible cause for this problem?

- A. Negotiation of parameters in Open packets fails.
- B. Mandatory attributes in Update packets are missing.
- C. Error BGP packets are received.
- D. After the BGP connection is set up, no Keepalive packet is received within the negotiated holdtime.

Correct Answer: B

### QUESTION 3

As shown in the figure below, an enterprise wants to implement secure access between the headquarters and branches through MPLS VPN. VPN traffic of branches must be forwarded through the headquarters for traffic monitoring. Which of the following statements regarding this solution is false?



- A. When the Hub-CE and Hub-PE use EBGP to transmit routing Information, the Hub-PE must be able to accept routes with the AS number repeated once so that routes advertised by the Hub-CE can be received.
- B. OSPF can be used to exchange routing information between Hub CEs and Hub-PEs as well as between Spoke-PEs and Spoke-CEs.
- C. BGP can be used to exchange VPN routing information between CEs and PEs.
- D. The MP-IBGP peer relationship can be established between Spoke-PEs to exchange VPN routing information

Correct Answer: A



**QUESTION 4**

What is the function of Route Target (RT) on an MPLS VPN?

- A. Allows the remote PE to determine which VPNv4 routes should not be imported to a specific VRF instance.
- B. Allows the remote CE to determine which VPNv4 routes to be imported to a specific VRF instance.
- C. Allows the remote PE to determine which VPNv4 routes to be imported to a specific VPN routing and forwarding (VRF) instance.
- D. Allows the remote CE to determine which VPNv4 routes should not be imported to a specific VRF instance.

Correct Answer: AC

**QUESTION 5**

The port shaping rate is set to 100 Mbps PIR, and the bandwidth of the service input and configuration of the interface is as follows. Then the first round of rotation, the assigned team What is the bandwidth?

队列类型	队列	带宽	PIR(bps)
CS7	PQ	30M	30M
CS6	PQ	10M	10M
EF	WFQ, 权重5	90M	10M
AF4	WFQ, 权重4	10M	10M
AF3	WFQ, 权重3	10M	15M
AF2	WFQ, 权重2	20M	10M
AF1	WFQ, 权重1	20M	10M
BE	LPQ	100M	未配置

- A. 30M
- B. 15M
- C. 90M
- D. 25M

Correct Answer: B

[Latest H12-261 Dumps](#)

[H12-261 VCE Dumps](#)

[H12-261 Study Guide](#)