



HP0-Y52^{Q&As}

Applying HP FlexNetwork Fundamentals

Pass HP HP0-Y52 Exam with 100% Guarantee

Free Download Real Questions & Answers **PDF** and **VCE** file from:

<https://www.geekcert.com/hp0-y52.html>

100% Passing Guarantee
100% Money Back Assurance

Following Questions and Answers are all new published by HP Official Exam Center

- ⚙️ **Instant Download** After Purchase
- ⚙️ **100% Money Back** Guarantee
- ⚙️ **365 Days** Free Update
- ⚙️ **800,000+** Satisfied Customers





QUESTION 1

Two switches are members in an active Intelligent Resilient Framework (IRF) virtual device. A network administrator joins a third switch to the IRF virtual device. Which switch is now the master?

- A. The current master of the IRF virtual device always remains the master.
- B. The switch with the lowest member ID always becomes the master.
- C. The switch with the lowest priority value always becomes the master.
- D. The switch with the highest priority value always becomes the master.

Correct Answer: D

QUESTION 2

An HP ProVision switch is operating at its factory default settings. A network administrator connects the switch to a VLAN with a DHCP server. The switch-to-switch connection is carrying untagged traffic. The administrator wants to log in to the switch CLI using Telnet.

How should the administrator contact the switch and log in?

- A. Contact the switch at its DHCP-assigned IP address and log in with the default password hp.
- B. Contact the switch at its default IP address 192.168.1.1/24 and log in without entering a password.
- C. Contact the switch at its DHCP-assigned IP address and log in without entering a password.
- D. Contact the switch at its default IP address 192.168.1.1/24 and log in with the default password hp.

Correct Answer: B

QUESTION 3

Match the description with the 802.11 standard. (Each option may be used only once.)

Hot Area:



Supports channel bonding

	▼
802.11n	
802.11g	
802.11a	
802.11b	

Supports data rates up to 54 Mbps and operates in the 2.4 GHz band

	▼
802.11n	
802.11g	
802.11a	
802.11b	

Supports data rates up to 54 Mbps and operates in the 5 GHz band

	▼
802.11n	
802.11g	
802.11a	
802.11b	

Supports only data rates up to 11 Mbps

	▼
802.11n	
802.11g	
802.11a	
802.11b	

Correct Answer:



Supports channel bonding

▼
802.11n
802.11g
802.11a
802.11b

Supports data rates up to 54 Mbps and operates in the 2.4 GHz band

▼
802.11n
802.11g
802.11a
802.11b

Supports data rates up to 54 Mbps and operates in the 5 GHz band

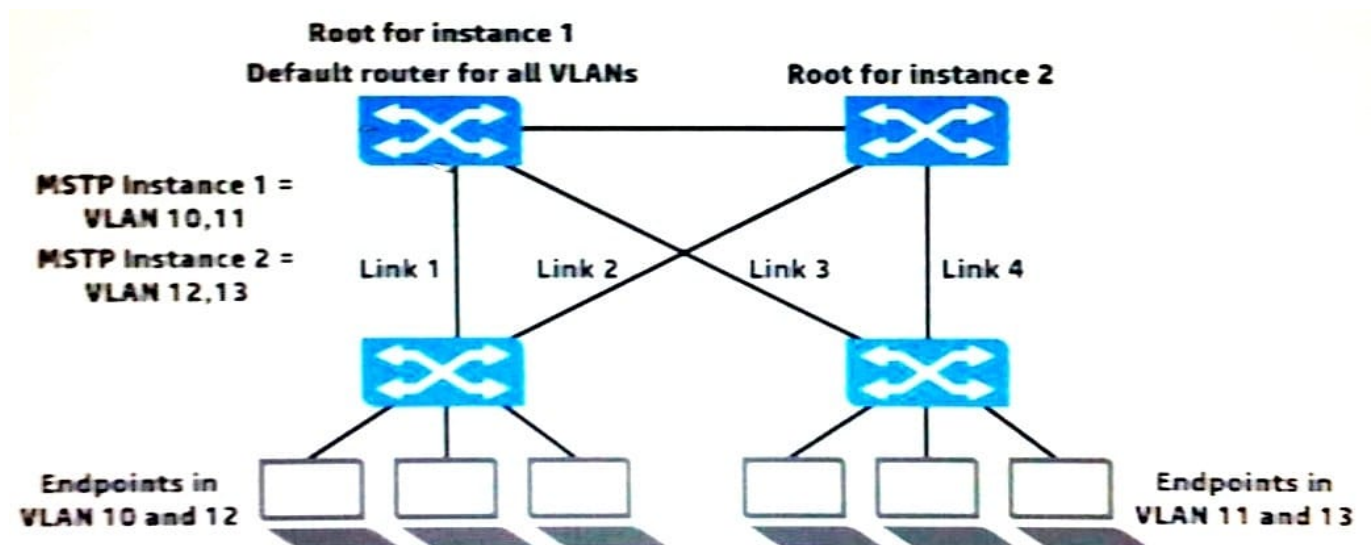
▼
802.11n
802.11g
802.11a
802.11b

Supports only data rates up to 11 Mbps

▼
802.11n
802.11g
802.11a
802.11b

QUESTION 4

Refer to the exhibit.



The network administrator is setting up Multiple Spanning Tree Protocol (MSTP) with the settings shown in the exhibit. All the switches are in the same region. The administrator has requested help determining which VLANs each switch-to-switch link should carry. What is a recommendation for this topology?

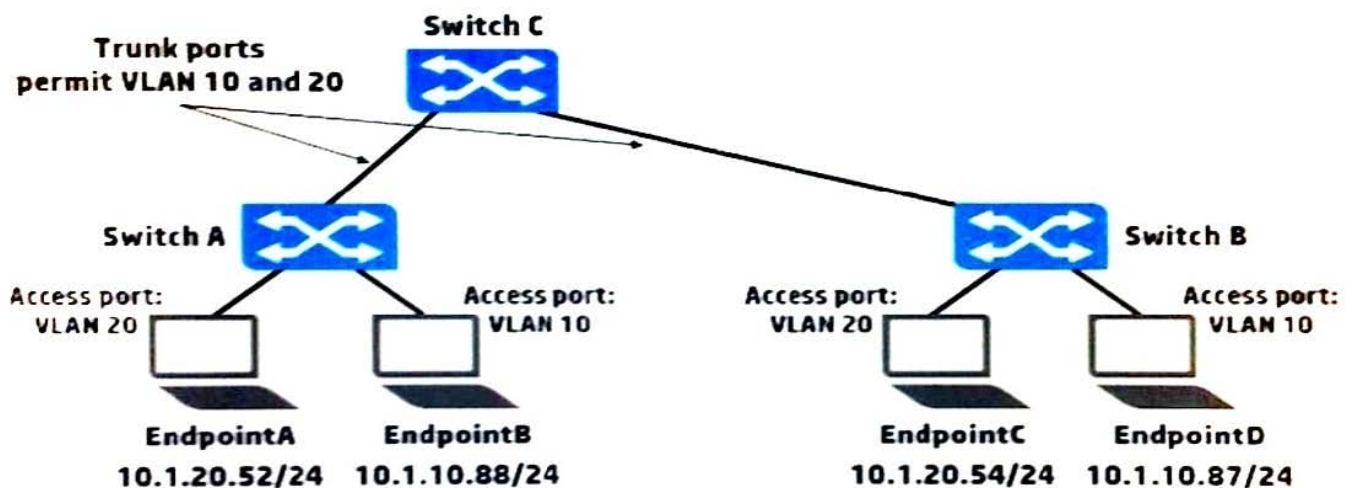


- A. To prevent disruptions during link failure, Links 1-4 should carry VLANs 10-13.
- B. To optimize forwarding, Links 1 and 2 should only carry VLANs 10 and 12, and Links 3 and 4 should only carry VLANs 11 and 13.
- C. To ensure compatibility with MSTP, Links 1-4 should be untagged in VLAN 1 and have no tagged VLAN assignments.
- D. To optimize forwarding, Links 1 and 3 should only carry VLANs 10 and 11, and Links 2 and 4 should only carry VLANs 12 and 13.

Correct Answer: D

QUESTION 5

Refer to the exhibit.



Which endpoint or endpoints receive broadcast ARP requests sent by EndpointA?

- A. EndpointB, EndpointC, and EndpointD
- B. EndpointB only
- C. EndpointB and EndpointC only
- D. EndpointC only

Correct Answer: D

[HP0-Y52 PDF Dumps](#)

[HP0-Y52 Study Guide](#)

[HP0-Y52 Braindumps](#)