



HP2-Z37^{Q&As}

Fast Track - Applying HP FlexNetwork Fundamentals

Pass HP HP2-Z37 Exam with 100% Guarantee

Free Download Real Questions & Answers **PDF** and **VCE** file from:

<https://www.geekcert.com/hp2-z37.html>

100% Passing Guarantee
100% Money Back Assurance

Following Questions and Answers are all new published by HP Official Exam Center

-  **Instant Download** After Purchase
-  **100% Money Back** Guarantee
-  **365 Days** Free Update
-  **800,000+** Satisfied Customers





QUESTION 1

Refer to the exhibit.

```
<Comware> dir
Directory of cfa0:/

 0 drw-      6985954   Apr 26  2007 21:06:29  logfile
 1 -rw-      3141842   Apr 27  2007 04:37:17  main.app
 2 -rw-         1518   Apr 26  2007 12:05:38  config.cfg
 3 -rw-         2045   May 04  2007 15:50:01  backcfg.cfg
 4 -rwh          428   Apr 27  2007 16:41:21  hostkey
 5 -rwh          572   Apr 27  2007 16:41:31  serverkey
14605 KB total (1955 KB free)
```

```
<Comware> dir /all
Directory of cfa0:/

 0 drw-      6985954   Apr 26  2007 21:06:29  logfile
 1 -rw-      3141842   Apr 27  2007 04:37:17  main.app
 2 -rw-         1518   Apr 26  2007 12:05:38  config.cfg
 3 -rw-         2045   May 04  2007 15:50:01  backcfg.cfg
 4 -rwh          428   Apr 27  2007 16:41:21  hostkey
 5 -rwh          572   Apr 27  2007 16:41:31  serverkey
 6 -rw-     2737556   Oct 12  2007 01:31:44  [old.app]
14605 KB total (1955 KB free)
```

A network administrator is upgrading the operating system on an HP Comware switch. When copying the new image from a TFTP server to the flash of the switch, the process fails because there is not enough flash to store the new operating system. The new operating system is 3.2MB in size. The administrator then executes the commands shown in the exhibit above.

Which action should the administrator perform to solve this problem?

- A. Execute the reset recycle-bin command, and perform the TFTP transfer again.
- B. Execute the clear flash command, and perform the TFTP transfer again.
- C. Reformat flash, and perform the TFTP transfer again.
- D. Execute the delete old.app command, and perform the TFTP transfer again.

Correct Answer: A



QUESTION 2

Two switches are members in an active Intelligent Resilient Framework (IRF) virtual device. A network administrator joins a third switch to the IRF virtual device. Which switch is now the master?

- A. The current master of the IRF virtual device always remains the master.
- B. The switch with the lowest member ID always becomes the master.
- C. The switch with the lowest priority value always becomes the master.
- D. The switch with the highest priority value always becomes the master.

Correct Answer: D

QUESTION 3

A network administrator wants to join a switch to an Intelligent Resilient Framework (IRF) virtual device. The administrator changes the switch member ID from 1 to 2. What must the administrator do before configuring the IRF port on this switch?

- A. Physically connect the switch to the IRF master device.
- B. Reboot the switch.
- C. Disable IP routing.
- D. Enable the physical interfaces that will be assigned to the IRF port.

Correct Answer: D

QUESTION 4

A network administrator configures this command on an HP ProVision switch:

```
vlan 30 ip helper-address 10.0.3.253
```

The switch is able to ping 10.0.3.253. After the administrator configures the command, users in VLAN 30 report that their PCs fail to acquire addresses using DHCP.

What should the administrator ensure?

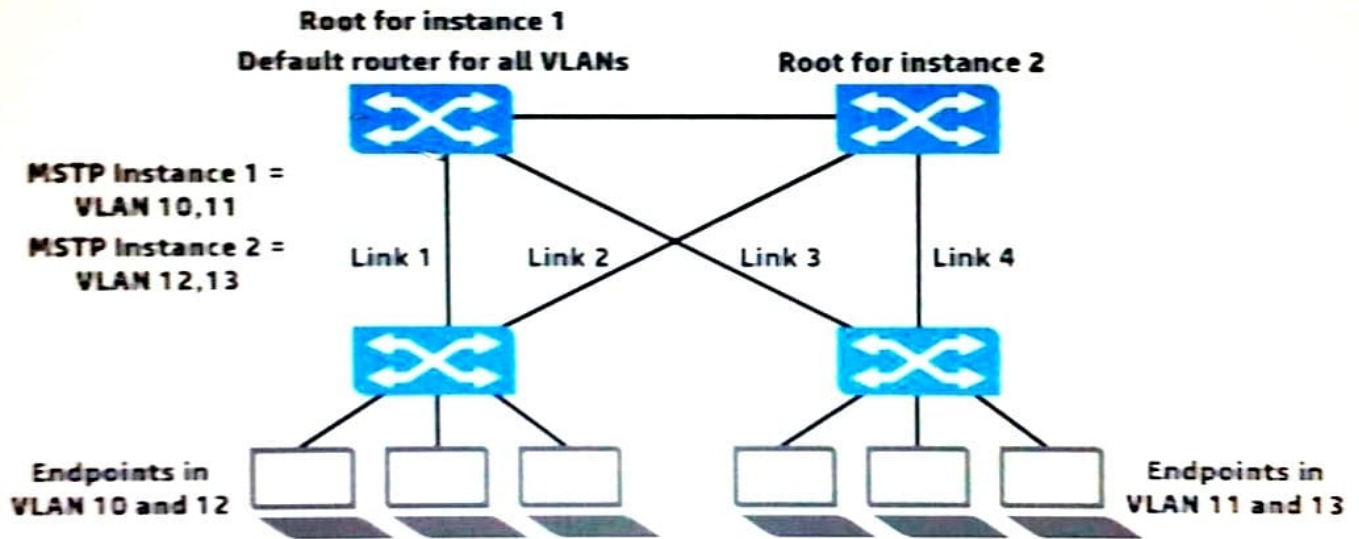
- A. that the switch is configured with a dynamic IP routing protocol
- B. that the switch has DHCP relay functions enabled
- C. that the switch has DHCP server functions enabled
- D. that the switch has an IP address on VLAN 30

Correct Answer: A



QUESTION 5

Refer to the exhibit.



The network administrator is setting up Multiple Spanning Tree Protocol (MSTP) with the settings shown in the exhibit. All the switches are in the same region. The administrator has requested help determining which VLANs each switch-to-switch link should carry. What is a recommendation for this topology?

- A. To prevent disruptions during link failure, Links 1-4 should carry VLANs 10-13.
- B. To optimize forwarding, Links 1 and 2 should only carry VLANs 10 and 12, and Links 3 and 4 should only carry VLANs 11 and 13.
- C. To ensure compatibility with MSTP, Links 1-4 should be untagged in VLAN 1 and have no tagged VLAN assignments.
- D. To optimize forwarding, Links 1 and 3 should only carry VLANs 10 and 11, and Links 2 and 4 should only carry VLANs 12 and 13.

Correct Answer: D

[Latest HP2-Z37 Dumps](#)

[HP2-Z37 PDF Dumps](#)

[HP2-Z37 VCE Dumps](#)