



# HP2-Z37<sup>Q&As</sup>

Fast Track - Applying HP FlexNetwork Fundamentals

## Pass HP HP2-Z37 Exam with 100% Guarantee

Free Download Real Questions & Answers **PDF** and **VCE** file from:

<https://www.geekcert.com/hp2-z37.html>

100% Passing Guarantee  
100% Money Back Assurance

Following Questions and Answers are all new published by HP Official Exam Center

-  **Instant Download** After Purchase
-  **100% Money Back** Guarantee
-  **365 Days** Free Update
-  **800,000+** Satisfied Customers





### QUESTION 1

A network administrator deletes old files in the flash file system of an HP Comware switch. The administrator then notices that the amount of free space available has not changed. Which command must the administrator execute to free up the space from deleted files?

- A. reset recycle-bin
- B. recycle-bin cleanup
- C. cleanup recycle-bin
- D. recycle-bin empty

Correct Answer: A

### QUESTION 2

Refer to the Exhibit.

```
<Comware> display link-aggregation verbose bridge-aggregation 2

Loadsharing Type: Shar -- Loadsharing, NonS -- Non-Loadsharing
Port Status: S -- Selected, U -- Unselected
Flags: A -- LACP_Activity, B -- LACP_Timeout, C -- Aggregation,
       D -- Synchronization, E -- Collecting, F -- Distributing,
       G -- Defaulted, H -- Expired

Aggregation Interface: Bridge-Aggregation2
Aggregation Mode: Dynamic
Loadsharing Type: Shar
System ID: 0x8000, 000f-e267-6c6a

Local:
  Port          Status  Priority  Oper-Key  Flag
-----
GE1/0/3        S       32768    2         {ACDEF}
GE1/0/4        S       32768    2         {ACDEF}

Remote:
  Actor        Partner  Priority  Oper-Key  SystemID          Flag
-----
GE1/0/3        32       32768    2         0x800, 000f-e267-57ad {ACDEF}
GE1/0/4        26       32768    2         0x800, 000f-e267-57ad {ACDEF}
```

Examine the output from the Comware command shown in the exhibit. Based on the flag of ACDEF, what is the status of the aggregated link?

- A. Static LACP link aggregation is configured, and the aggregated link is operational with load sharing not being performed.



- B. Static link aggregation is configured, and the aggregated link is operational with load sharing being performed.
- C. Static LACP link aggregation is configured, and the aggregated link is operational with load sharing being performed.
- D. Static link aggregation is configured, and the aggregated link is operational with load sharing not being performed.

Correct Answer: B

---

### QUESTION 3

On an HP Comware switch, which view must an administrator access in order to execute the debug command?

- A. Manager
- B. Operator
- C. System
- D. User

Correct Answer: D

---

### QUESTION 4

When adding a new member to an existing IRF domain, which of the following must you perform first?

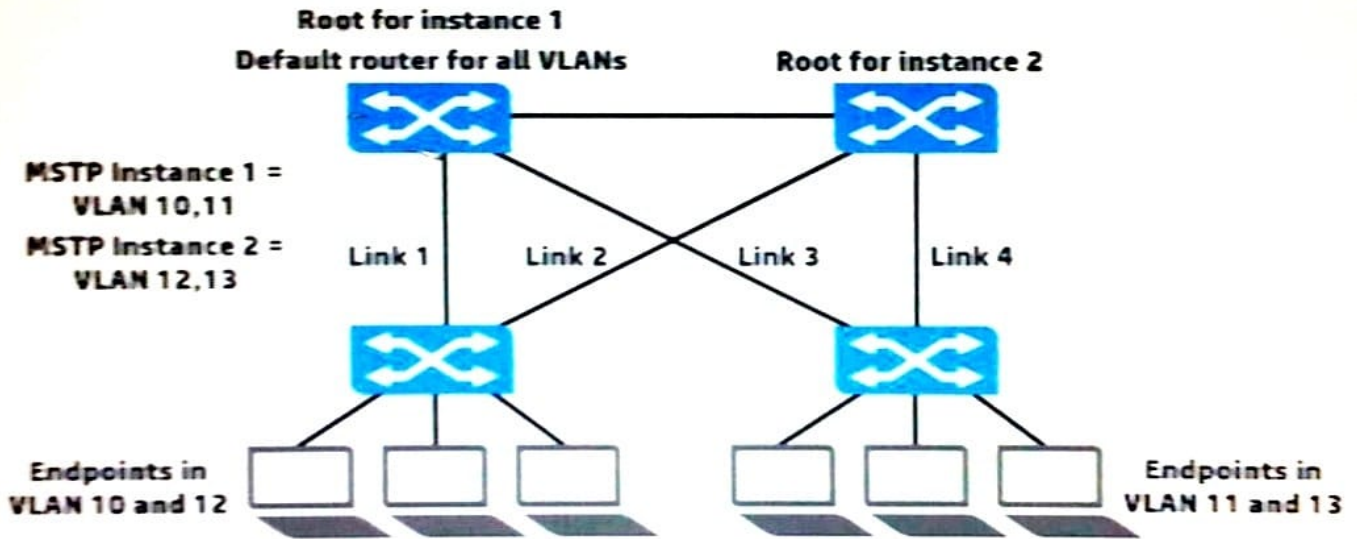
- A. Define the IRF priority.
- B. Create the IRF logical port.
- C. Define the IRF domain name.
- D. Define the IRF member number.

Correct Answer: D

---

### QUESTION 5

Refer to the exhibit.



The network administrator is setting up Multiple Spanning Tree Protocol (MSTP) with the settings shown in the exhibit. All the switches are in the same region. The administrator has requested help determining which VLANs each switch-to-switch link should carry. What is a recommendation for this topology?

- A. To prevent disruptions during link failure, Links 1-4 should carry VLANs 10-13.
- B. To optimize forwarding, Links 1 and 2 should only carry VLANs 10 and 12, and Links 3 and 4 should only carry VLANs 11 and 13.
- C. To ensure compatibility with MSTP, Links 1-4 should be untagged in VLAN 1 and have no tagged VLAN assignments.
- D. To optimize forwarding, Links 1 and 3 should only carry VLANs 10 and 11, and Links 2 and 4 should only carry VLANs 12 and 13.

Correct Answer: D

[HP2-Z37 PDF Dumps](#)

[HP2-Z37 Practice Test](#)

[HP2-Z37 Braindumps](#)