



# HPE0-J68<sup>Q&As</sup>

HPE Storage Solutions

**Pass HP HPE0-J68 Exam with 100% Guarantee**

Free Download Real Questions & Answers **PDF** and **VCE** file from:

<https://www.geekcert.com/hpe0-j68.html>

100% Passing Guarantee  
100% Money Back Assurance

Following Questions and Answers are all new published by HP Official Exam Center

- ⚙️ **Instant Download** After Purchase
- ⚙️ **100% Money Back** Guarantee
- ⚙️ **365 Days** Free Update
- ⚙️ **800,000+** Satisfied Customers





## QUESTION 1

### DRAG DROP

Match the MSA architecture components with their descriptions.

Select and Place:

| Component          |                      | Description  |
|--------------------|----------------------|--|
| Tier               | <input type="text"/> | aggregation of disks of the same type using a specific RAID level  |
| Virtual disk group | <input type="text"/> | automatically assigned performance characteristic                  |
| Volume group       | <input type="text"/> | collection of virtual volumes allowing group management functions  |
| Virtual pool       | <input type="text"/> | collection of virtual disk groups                                  |
| Virtual volume     | <input type="text"/> | logical subdivision of a virtual pool that can be mapped to a host |

Correct Answer:

| Component |                    | Description  |
|-----------|--------------------|--|
|           | Virtual disk group | aggregation of disks of the same type using a specific RAID level  |
|           | Virtual volume     | automatically assigned performance characteristic                  |
|           | Volume group       | collection of virtual volumes allowing group management functions  |
|           | Virtual pool       | collection of virtual disk groups                                  |
|           | Tier               | logical subdivision of a virtual pool that can be mapped to a host |

## QUESTION 2

An existing Nimble customer is interested in adding storage to their environment to store his Backups, but has a constrained budget and limited personal .The solution must scale to allow for substantial growth over the next five years?

- A. Nimble SF series
- B. Nimble AF series
- C. Nimble cloud volume



D. Nimble CS series

Correct Answer: B

### QUESTION 3

While demonstrating an HPE 3PAR StoreServ 9450 array, the customer asks you to demonstrate the File Persona features. Which objects do you need to create to demonstrate these features? (Choose two.)

A. File share

B. Storage container

C. Host

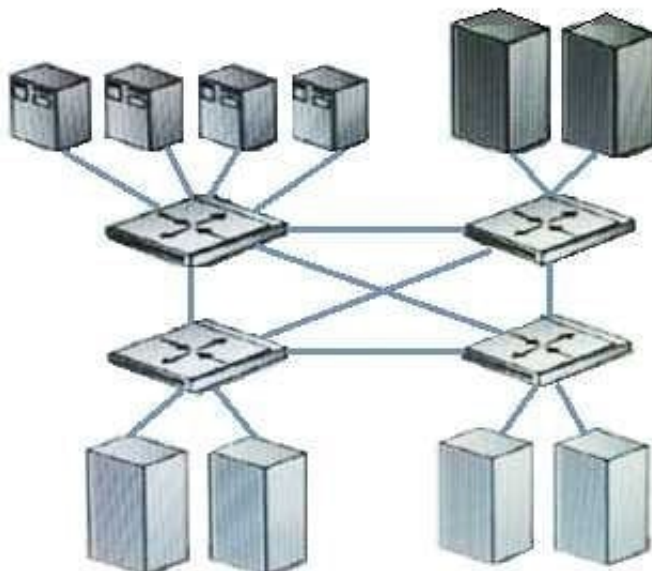
D. Remote copy group

E. Virtual file server

Correct Answer: AE

### QUESTION 4

Exhibit:



Which fabric design is shown?

A. meshed

B. single fabric

C. cascaded



---

D. core-edge

Correct Answer: A

---

#### QUESTION 5

Due to industry regulation a customer is required to store backup at a separate data center from the company's main data center. The customer application require fast backup and quick restore increase of data lose. Which solution allow the customer to meet both industry and application requirement?

- A. HPE storeServe 3par in main and secondary data center with RCIP replication between arrays
- B. Nimble AF series in main data center and Nimble SF series in secondary data center
- C. HPE Storeserve 3Par in main data center HPE StoreOnce in secondary data center with RMC
- D. HPR StoreServ 3PAR in main data center and HPE StoreOnce in both main and secondary data center.

Correct Answer: C

[HPE0-J68 VCE Dumps](#)

[HPE0-J68 Practice Test](#)

[HPE0-J68 Braindumps](#)