



HPE6-A15^{Q&As}

Aruba Certified Clearpass Professional 6.5

Pass HP HPE6-A15 Exam with 100% Guarantee

Free Download Real Questions & Answers **PDF** and **VCE** file from:

<https://www.geekcert.com/hpe6-a15.html>

100% Passing Guarantee
100% Money Back Assurance

Following Questions and Answers are all new published by HP Official Exam Center

- ⚙️ **Instant Download** After Purchase
- ⚙️ **100% Money Back** Guarantee
- ⚙️ **365 Days** Free Update
- ⚙️ **800,000+** Satisfied Customers





QUESTION 1

A customer would like to deploy ClearPass with these requirements: -2000 devices need to be Onboarded -2000 corporate devices need to run posture checks daily -500 guest users need to authenticate each day using the web login feature

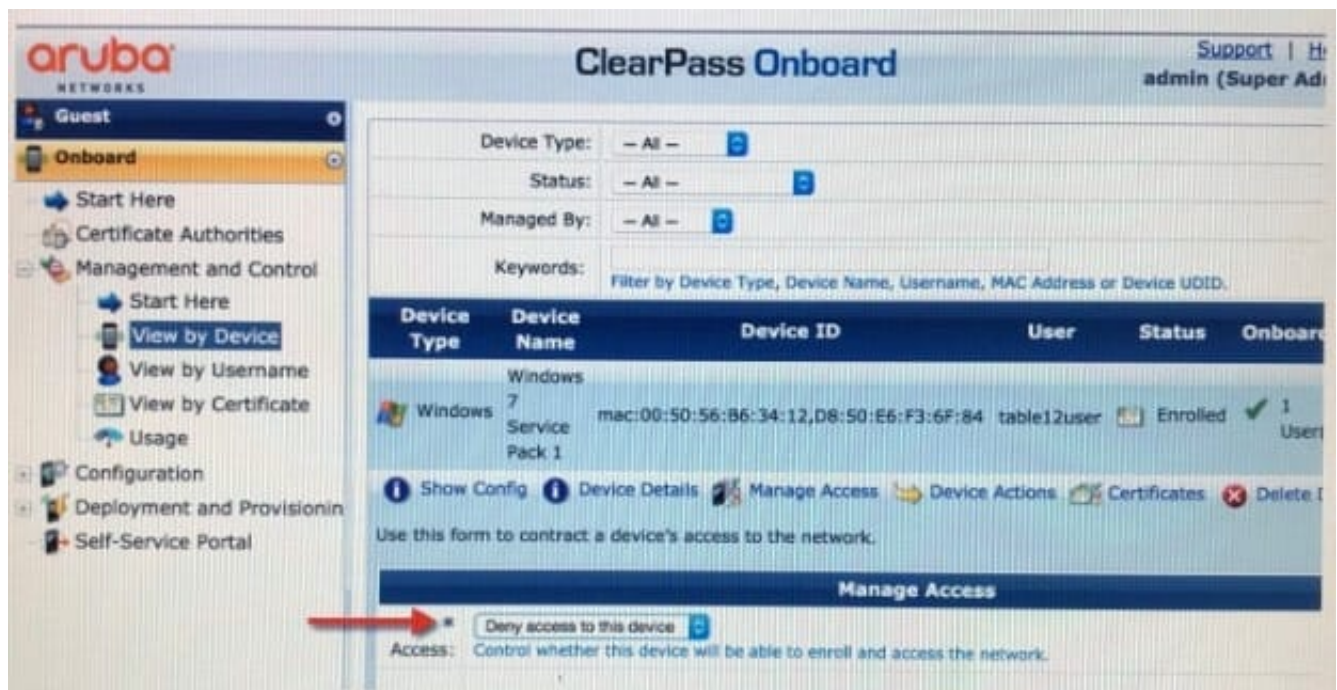
What is the license mix that customer will need to purchase?

- A. CP-HW-5k, 2500 ClearPass Enterprise
- B. CP-HW-25k, 4500 ClearPass Enterprise
- C. CP-HW-500, 2500 ClearPass Enterprise
- D. CP-HW-25k, 4000 ClearPass Enterprise
- E. CP-HW-5k, 4500 ClearPass Enterprise

Correct Answer: B

QUESTION 2

Refer to the exhibit.



Based on the information shown, what will be the outcome when the administrator chooses "Deny Access to this Device"? (Select two.)

- A. EAP-TLS Authentication will be unaffected
- B. The user can Onboard their device again



- C. A new device certificate will be automatically pushed out to the device
- D. The user cannot Onboard their device again
- E. EAP-TLS Authentication will fail

Correct Answer: DE

The Device Management (View by Device) page lists all devices and lets you manage the devices\\' access to the network. For each device, you can allow or deny network access.

When you select the Deny option, a message advises you that any certificates associated with it will be revoked. The device cannot be re-enrolled as long as access is denied. To re-enroll the device, you must use this field to allow access again. References:

<http://www.arubanetworks.com/techdocs/ClearPass/6.6/Guest/Content/Onboard/DeviceManagement.htm>

QUESTION 3

What is a benefit of ClearPass Onguard?

- A. It enables organizations to run advanced endpoint posture assessments.
- B. It allows a receptionist in a hotel to create accounts for guest users.
- C. It allows employees to self-provision their personal devices on the corporate network.
- D. It offers an easy way for users to self-configure their devices to support 802.1X authentication on wired and wireless networks.
- E. It allows employees to create temporary accounts for Wi-Fi access.

Correct Answer: A

QUESTION 4

Refer to the exhibit.

Type	Name	Value
1. Radius:IETF	Session-Timeout (27)	= 600
2. Click to add...		

An Enforcement Profile has been created in the Policy Manager as shown. Which action will ClearPass take based on the Enforcement Profile?

- A. it will count down 600 seconds and send a RADIUS CoA message to the NAD to end the user\\'s session after this time is up



- B. it will send the Session-Timeout attribute in the RADIUS Access-Request packet to the NAD and the NAD will end the user's session after 600 seconds
- C. it will count down 600 seconds and send a RADIUS CoA message to the user to end the user's session after this time is up
- D. it will send the Session-Timeout attribute in the RADIUS Access-Request packet to the user and the user's session will be terminated after 600 seconds

Correct Answer: D

Session Timeout (in seconds) - Configure the agent session timeout interval to re-evaluate the system health again. OnGuard triggers auto-remediation using this value to enable or disable AV-RTP status check on endpoint. Agent re-authentication is determined based on session-time out value. You can specify the session timeout interval from 60 ?600 seconds. Setting the lower value for session timeout interval results numerous authentication requests in Access Tracker page. The default value is 0.

References: http://www.arubanetworks.com/techdocs/ClearPass/Aruba_CPPMOnlineHelp/Content/CPPM_UserGuide/Enforce/EPAgent_Enforcement.htm

QUESTION 5

Refer to the exhibit.

Use this list view to modify the fields of the form **create_user**.

Quick Help		Preview Form		
Rank	Field	Type	Label	Description
10	sponsor_name	text	Sponsor's Name:	Name of the person sponsoring this visitor account.
15	sponsor_email	text	Sponsor's Email:	Email of the person sponsoring this visitor account.
20	visitor_name	text	Visitor's Name:	Name of the visitor.
25	visitor_phone	text	Phone Number	The visitor's phone number
Edit Edit base field Remove Insert before Insert After Enable Field				
30	visitor_company	text	Company Name:	Company name of the visitor.
40	email	text	Email Address:	The visitor's email address. This will become their username to log into the network.
50	modify_start_time	dropdown	Account Activation:	Select an option for changing the activation time of this account.



Based on the configuration of the create_user form shown, which statement accurately describes the status?

- A. The email field will be visible to guest users when they access the web login page.
- B. The visitor_company field will be visible to operators creating the account.
- C. The visitor_company field will be visible to the guest users when they access the web login page.
- D. The visitor_phone field will be visible to the guest users in the web login page.
- E. The visitor_phone field will be visible to operators creating the account.

Correct Answer: A

References: <https://community.arubanetworks.com/t5/AAA-NAC-Guest-Access-BYOD/expire-timezone-field-is-not-showing-up-on-the-create-user-form/ta-p/250230>

[HPE6-A15 Study Guide](#)

[HPE6-A15 Exam Questions](#)

[HPE6-A15 Braindumps](#)