



HPE6-A41^{Q&As}

Applying Aruba Switching Fundamentals for Mobility

Pass HP HPE6-A41 Exam with 100% Guarantee

Free Download Real Questions & Answers **PDF** and **VCE** file from:

<https://www.geekcert.com/hpe6-a41.html>

100% Passing Guarantee
100% Money Back Assurance

Following Questions and Answers are all new published by HP Official Exam Center

-  **Instant Download** After Purchase
-  **100% Money Back** Guarantee
-  **365 Days** Free Update
-  **800,000+** Satisfied Customers





QUESTION 1

What often happens when a Layer2 broadcast domain has a loop?

- A. Some switch-to-switch ports take the MSTP alternative role and stay in that role.
- B. In the switch MAC tables, the MAC addresses frequently move from one port to another.
- C. Switches automatically raise their MSTP configuration revision level by one.
- D. In the switch routing tables, some routes converge with new metrics.

Correct Answer: B

QUESTION 2

What is a requirement for links to successfully participate in an aggregated link?

- A. that links have the spanning tree protocol disabled
- B. that links use the same speed and duplex mode
- C. that links use the same media type and are untagged
- D. that links are untagged and are associated to the same VLAN

Correct Answer: B

QUESTION 3

Why would a network administrator use strict provisioning to configure the standby member in a Virtual Switching Framework (VSF) fabric?

- A. The network administrator wants to control which device can join the VSF fabric.
- B. The network administrator needs to configure the correct domain ID on the standby member before this member joins the VSF fabric.
- C. The network administrator wants to ensure the standby member is configured with the same settings as the commander.
- D. The network administrator does not know the MAC address of the standby member.

Correct Answer: A

QUESTION 4

Refer to the exhibits.



Exhibit 1

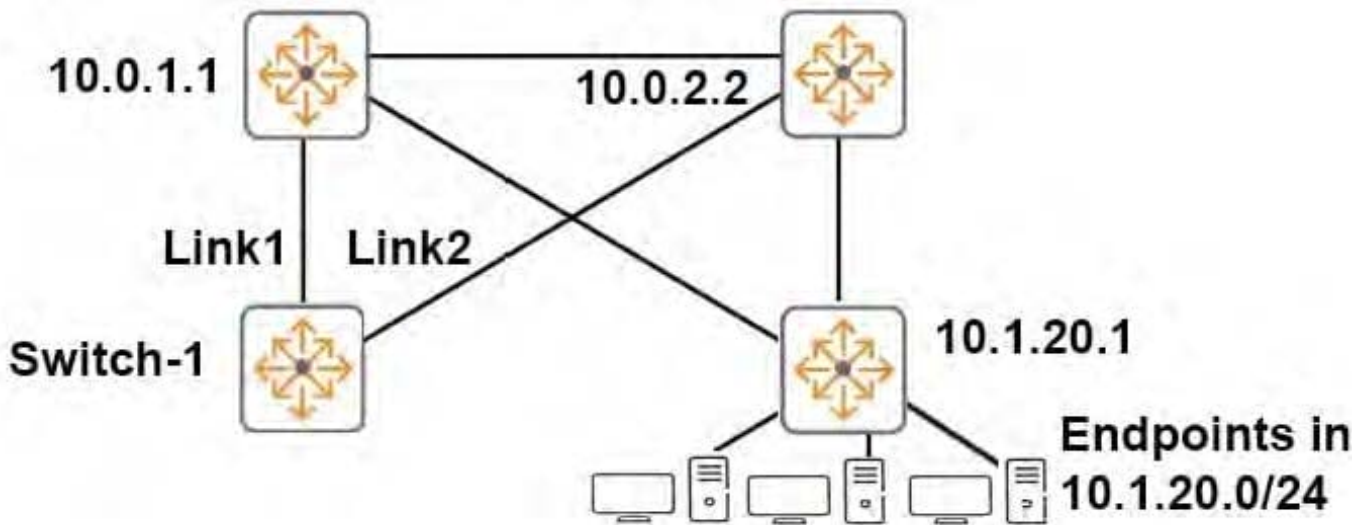


Exhibit 2

Switch-1 (config)# show ip route

IP Route Entries						
Destination	Gateway	VLAN	Type	Sub-Type	Metric	Dist.
10.0.1.0/24	VLAN101	101	connected		1	0
10.0.2.0/24	VLAN201	201	connected		1	0
10.1.10.0/24	VLAN10	10	connected		1	0
10.1.20.0/24	10.0.1.1	101	static		1	1
127.0.0.0/8	reject		static		0	0
127.0.0.1/32	lo0		connected		1	0

A network administrator wants to create a backup IP route to 10.1.20.0/24 on Switch-1. The backup route should use Link2, and it should only be used if Link1 is down.

What is the correct setup to accomplish this?

- A. an IP route through 10.1.20.1 with administrative distance 10
- B. an IP route through 10.0.2.2 with administrative distance 10
- C. an IP route through 10.0.2.2 with administrative distance 1
- D. an IP route through 10.1.20.1 with administrative distance 1

Correct Answer: B

QUESTION 5

Refer to the exhibit.

Exhibit 1.

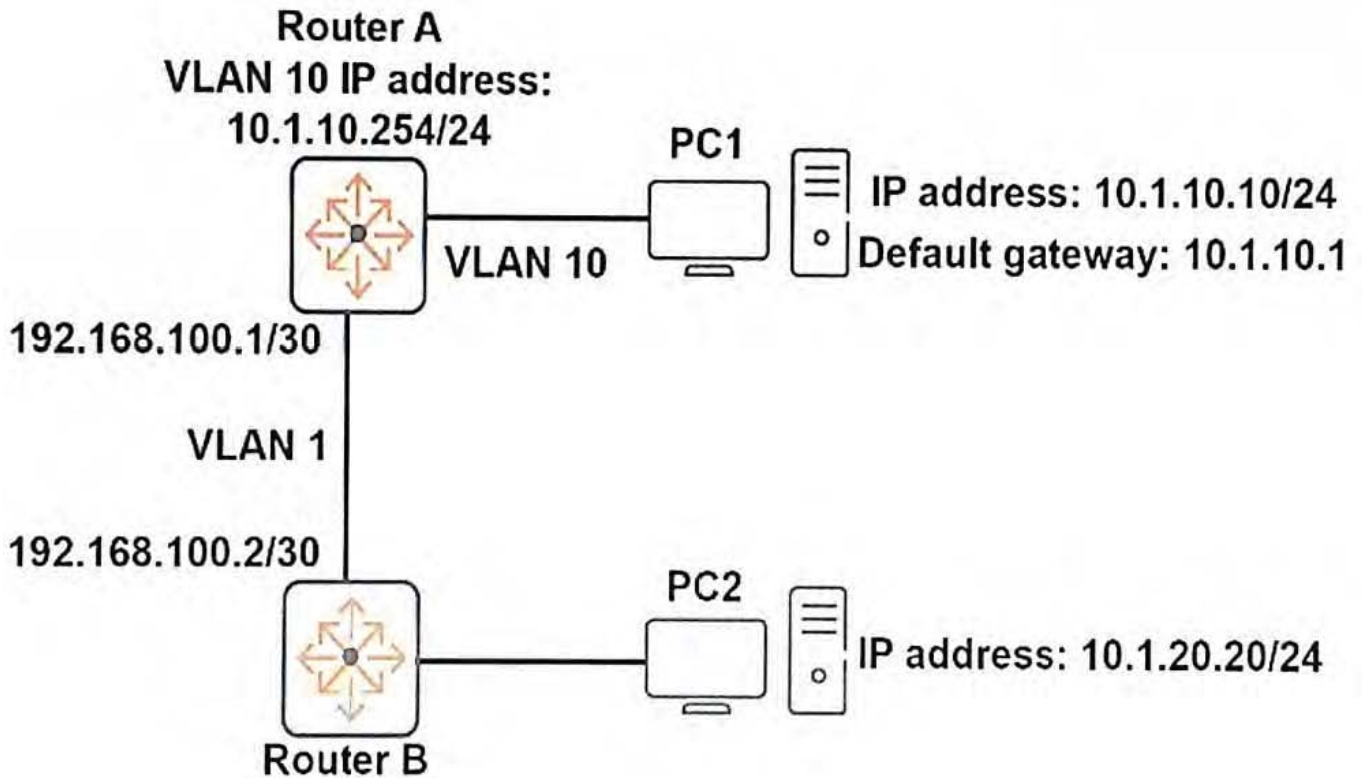


Exhibit 2.

Destination Mask	Proto	NextHop	Interface
10.1.10.0/24	Direct	10.1.10.254	vlan10
10.1.20.0/24	Static	192.168.100.2	vlan1
192.168.100.0/30	Direct	192.168.100.1	vlan1

PC1 cannot reach PC2.

Based on the exhibits, what could be the cause of this issue?

- A. PC1 has the wrong IP address for its default gateway setting.
- B. Router A has a direct route, instead of a static route, to 10.1.10.0/24.
- C. The next hop address for the 10.1.20.0/24 route is incorrect.
- D. Router A has an invalid subnet mask for the VLAN 1 subnet.

Correct Answer: A