



HPE6-A45^{Q&As}

Implementing Aruba Campus Switching solutions

Pass HP HPE6-A45 Exam with 100% Guarantee

Free Download Real Questions & Answers **PDF** and **VCE** file from:

<https://www.geekcert.com/hpe6-a45.html>

100% Passing Guarantee
100% Money Back Assurance

Following Questions and Answers are all new published by HP Official Exam Center

- ⚙️ **Instant Download** After Purchase
- ⚙️ **100% Money Back** Guarantee
- ⚙️ **365 Days** Free Update
- ⚙️ **800,000+** Satisfied Customers



**QUESTION 1**

Refer to the exhibits. Exhibit 1

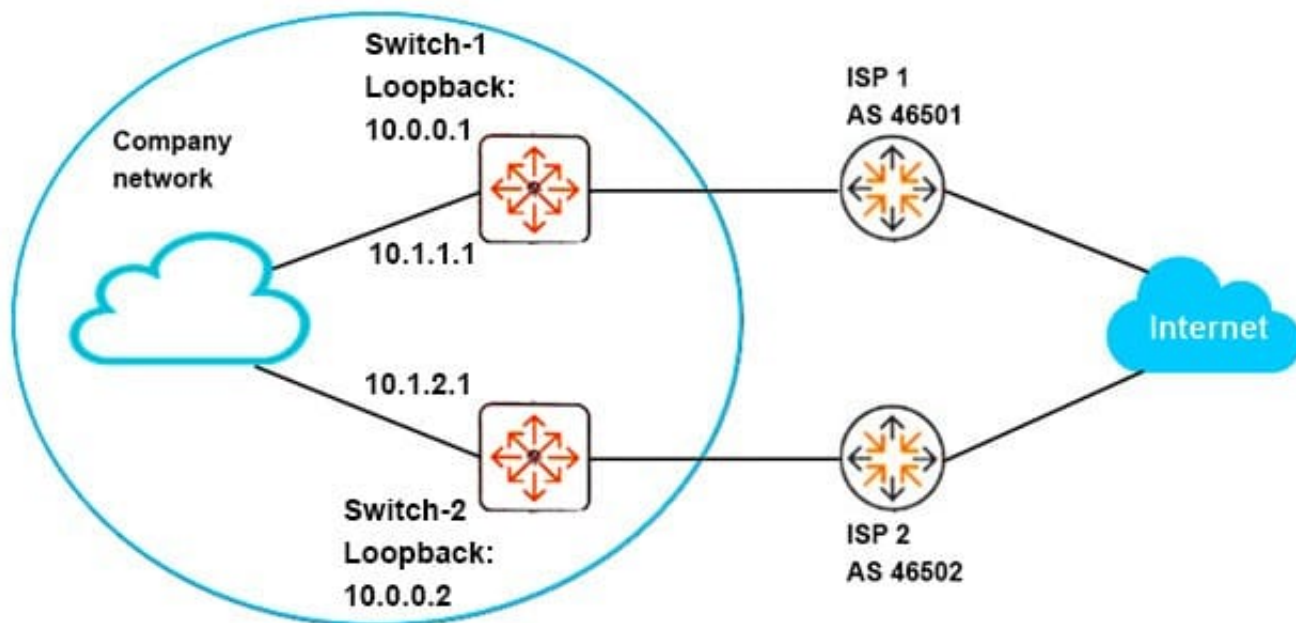


Exhibit 2 The network administrator needs to set up BGP between the two company switches, Switch-1 and Switch



```
Switch-1# show ip bgp summary
```

Peer Information

Remote Address	Remote-AS	Local-AS	State	Admin Status
10.0.0.2	46500	46500	Connect	Start

```
Switch-1# show running-config router bgp
```

Running configuration:

```
router bgp 46500
  enable
  neighbor 10.0.0.2 remote-as 46500
  exit
```

```
Switch-2# show ip bgp summary
```

Peer Information

Remote Address	Remote-AS	Local-AS	State	Admin Status
10.0.0.1	46500	46500	Connect	Start

```
Switch 2# show running config router bgp
```

Running configuration:

```
router bgp 46500
  enable
  neighbor 10.0.0.1 remote-as 46500
  exit
```

2. The BGP connection does not establish.

Based on the exhibits, what does the administrator need to do to fix the issue?

- A. Set the update source for the neighbor to the local loopback interface on each switch.
- B. Enter the network command for 10.0.0.0/24 in the router BGP mode on each switch.
- C. Enable the multihop option for the neighbor on each of the switches.
- D. Enable BGP on the interfaces that the switches use to reach each other.



Correct Answer: A

QUESTION 2

Two 5400R AOS-Switches are OSPF neighbors. The network administrator wants routing to update as quickly as possible in the event of a failure on a neighboring switch.

Which technology should the administrator implement on the connected switch interfaces?

- A. MAC Lockdown
- B. Unidirectional Link Detection (UDLD)
- C. Bidirectional Forwarding Detection (BFD)
- D. Spanning Tree Root Guard

Correct Answer: C

QUESTION 3

A network administrator needs to create a backplane stack with four AOS-Switches. The administrator wants to choose which switch becomes the commander.

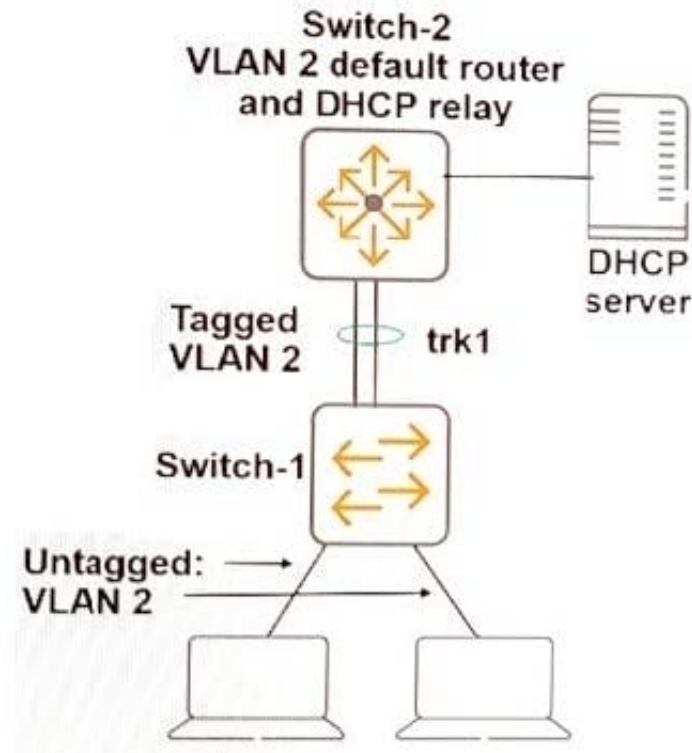
Which procedure meets those needs?

- A. Boot all of the switches at the same time and then connect the backplane stacking links. Then, access the desired commander, and make sure it has member ID 1.
- B. Configure backplane switches settings on each switch while disconnected. Make sure the desired commander has priority value 1. Then, connect the switches.
- C. Boot up the desired commander first and make sure stacking is enabled on it. Then, connect the stacking links and boot the other switches.
- D. Configure backplane switching settings on each switch while disconnected. Make sure the desired commander has member ID 1. Then, connect the switches.

Correct Answer: D

QUESTION 4

Refer to the exhibit.



The network administrator enables DHCP snooping globally and on VLAN 2. An additional step is mandatory for DHCP snooping to operate correctly and for clients to receive DHCP settings.

What is the additional mandatory step?

- A. Define trk1 as a trusted DHCP port.
- B. Define an authorized DHCP server.
- C. Enable ARP protection.
- D. Define edge ports as untrusted DHCP ports.

Correct Answer: D

QUESTION 5

A network administrator needs to find the source of a performance issue. The administrator has seen that interfaces sometimes start to drop many packets, but the issue is intermittent, and the administrator is not sure exactly when it happens. The administrator wants to be alerted when interfaces start to drop packets. The switches already have an SNMP trap server configured on them.

What else should an administrator do on these switches?

- A. Enable link change SNMP traps on the switch
- B. Set up RMON alarms on dropped packet statistics
- C. Set the trap server to inform mode



D. Enable debugging to the session

Correct Answer: C

[HPE6-A45 PDF Dumps](#)

[HPE6-A45 Study Guide](#)

[HPE6-A45 Braindumps](#)