



HPE6-A49^{Q&As}

Aruba Certified Design Expert 8 Written Exam

Pass HP HPE6-A49 Exam with 100% Guarantee

Free Download Real Questions & Answers **PDF** and **VCE** file from:

<https://www.geekcert.com/hpe6-a49.html>

100% Passing Guarantee
100% Money Back Assurance

Following Questions and Answers are all new published by HP Official Exam Center

- ⚙️ **Instant Download** After Purchase
- ⚙️ **100% Money Back** Guarantee
- ⚙️ **365 Days** Free Update
- ⚙️ **800,000+** Satisfied Customers





QUESTION 1

A customer has multiple medium and large branch sites, each of which requires between 8 and 16 APs and supports between 200 and 600 wireless clients. Every branch site has an internet connection, which it uses to reach the central data center. The customer would prefer the WAN links to be optimized in the solution. Each site handles between 1 and 2 Gbps of traffic, most of which goes to the central data center. The data center has 7210 controllers for terminating the VPN connections.

Which branch office solution best meets the customer needs?

- A. CAPs and branch office controllers with an SD-WAN license
- B. IAPs and no branch office controllers
- C. CAPs and branch office controllers
- D. RAPs and no branch office controllers

Correct Answer: B

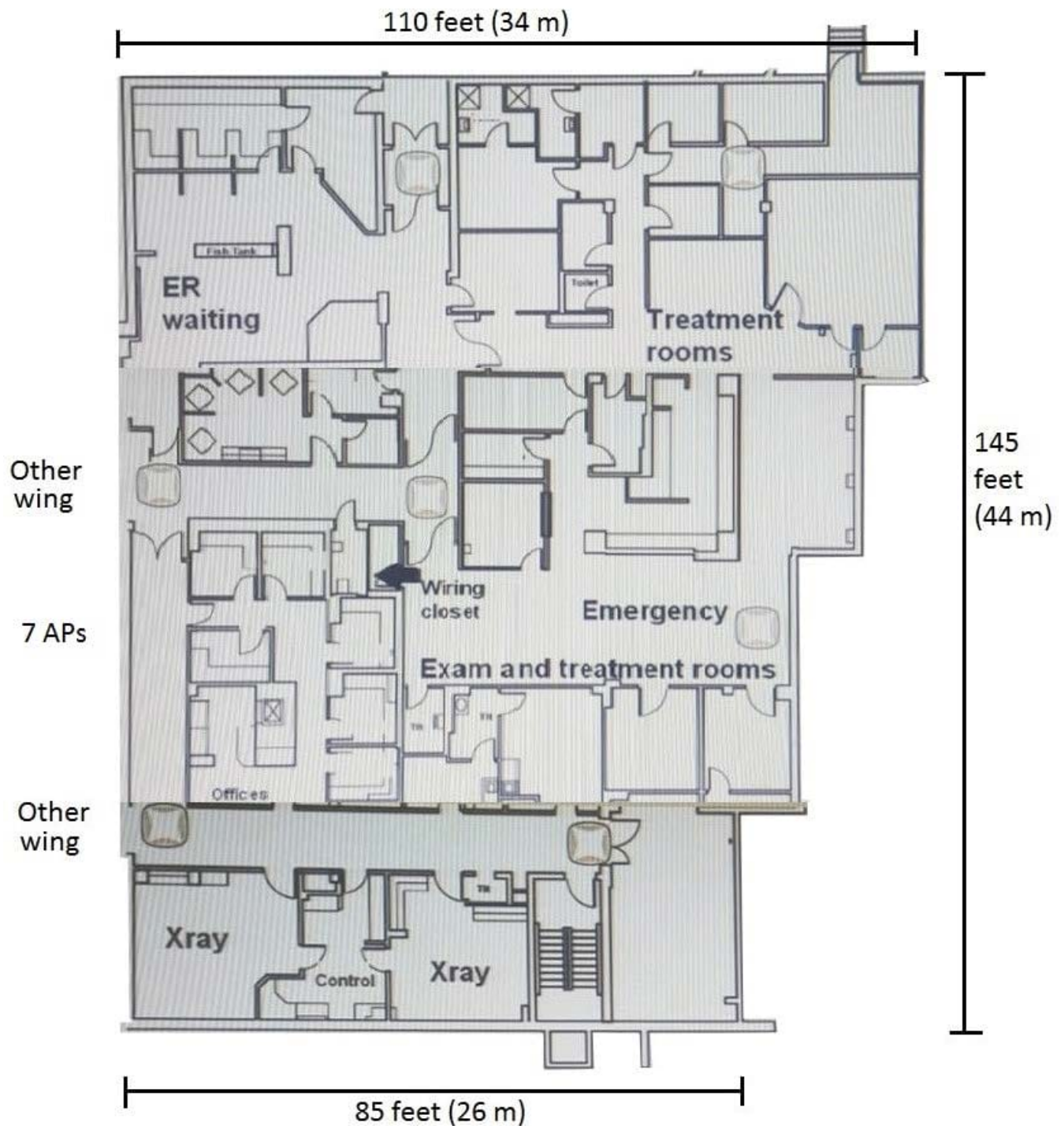
QUESTION 2

A hospital needs an upgrade to 802.11ac for its wireless network, which needs to provide complete coverage. The hospital has a concrete exterior and uses drywalls for all of the interior walls with a few exceptions as mandated for safety. The building has 10 foot (3m) ceilings. The legacy APs were deployed in the hallway, but the customer is open to deploying APs in any room such as reception areas, patient rooms, operating rooms, treatment rooms, and lounges. The wireless network must support wireless medical devices, voice communicators for medical staff, laptops in nurse stations, medical staff tablets, and visitor and patient personal devices. All of these devices support both the 2.4GHz and 5GHz band. The exhibits below show one wing of one floor of the hospital. This wing is about 14,000 square feet (1300 sq. m). This area has up to: 40 concurrent patients and visitors, who might have up to two devices 40 concurrent staff members, who might have up to three devices About 100 medical and other types of wireless devices

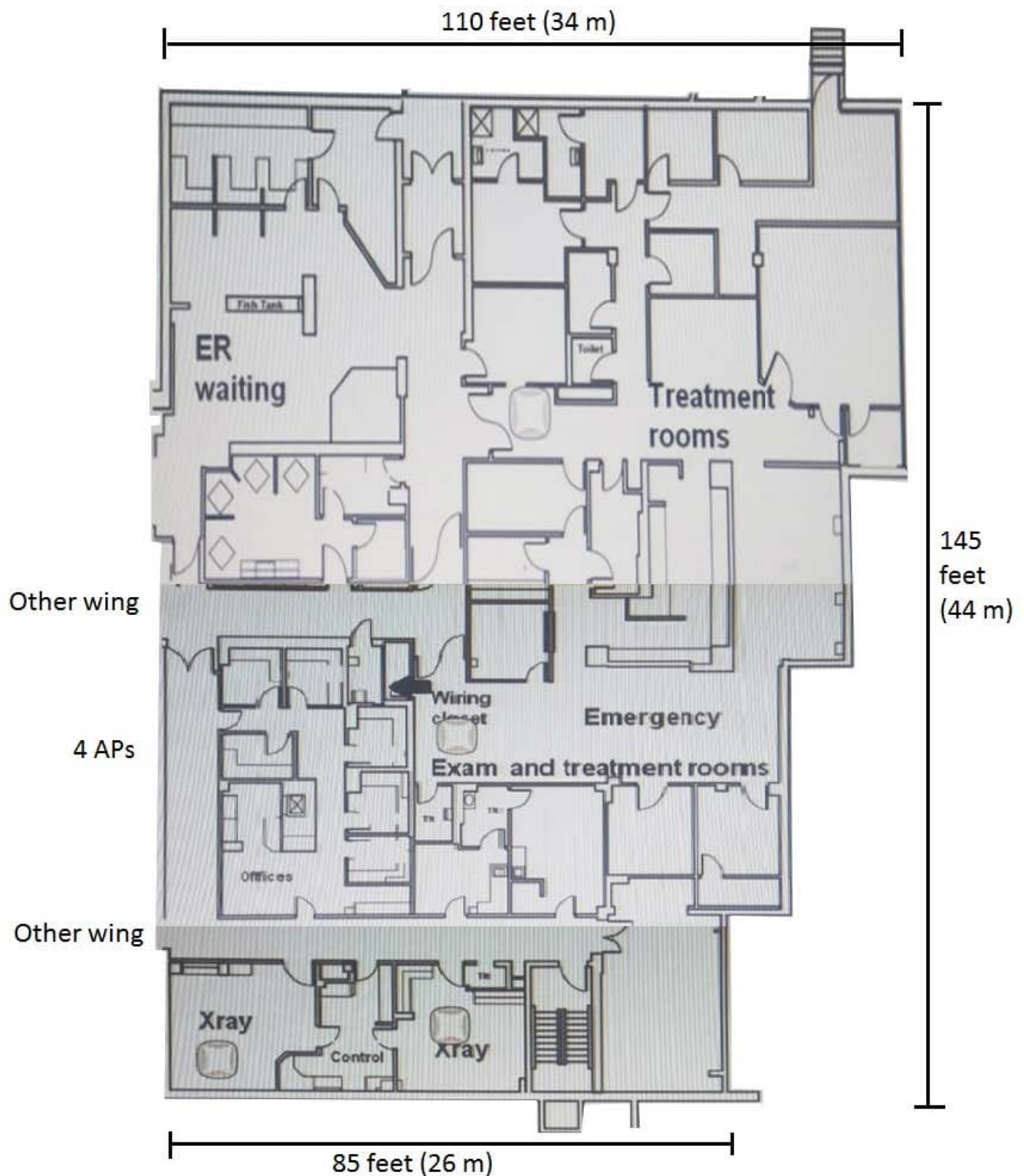
Several of these wireless medical devices are in the X-ray and X-ray control rooms. The architect has already planned to place APs in stairwells on another floor.

Which AP plan for this wing of this floor meets the customer needs?

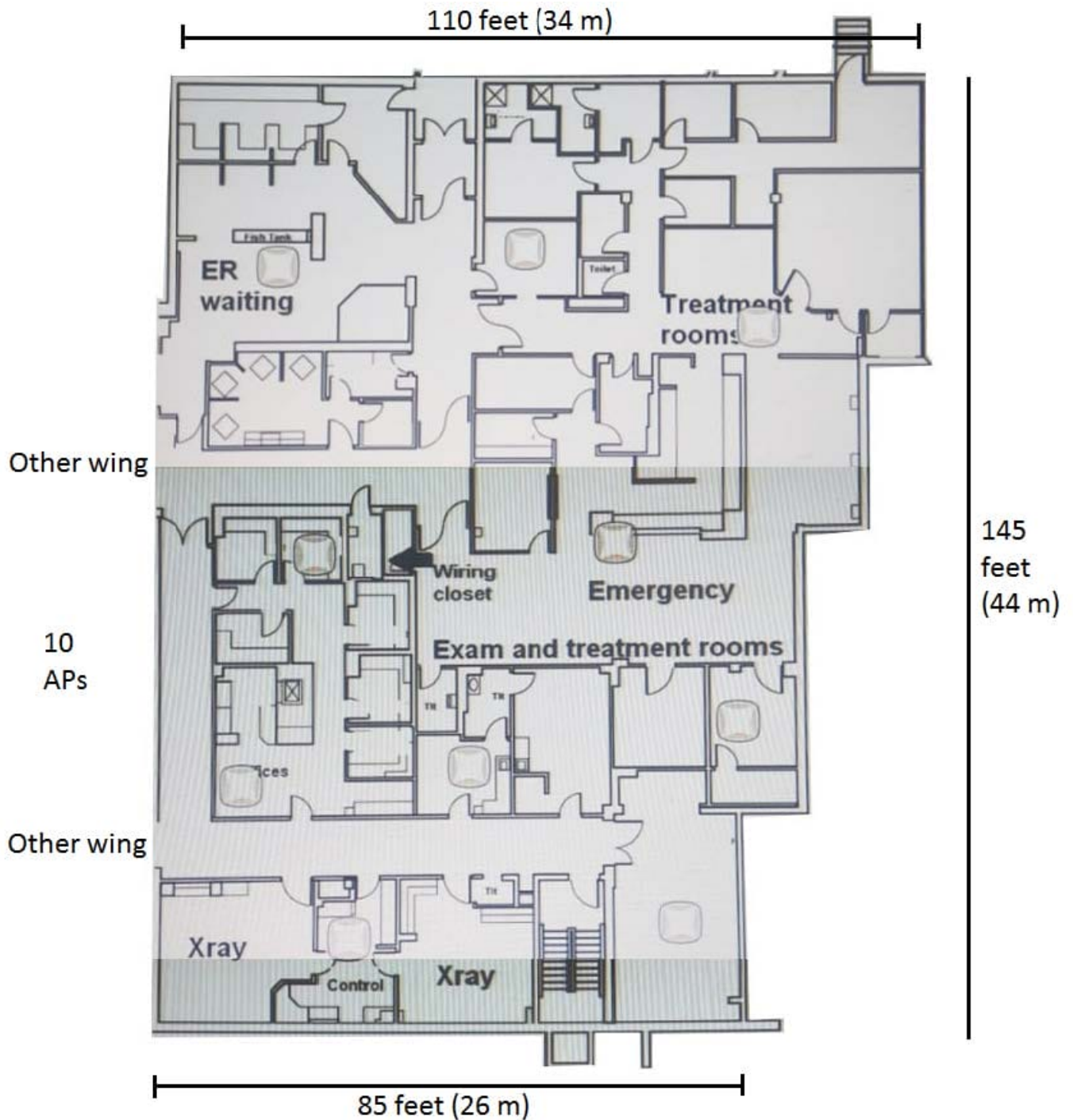
- A.



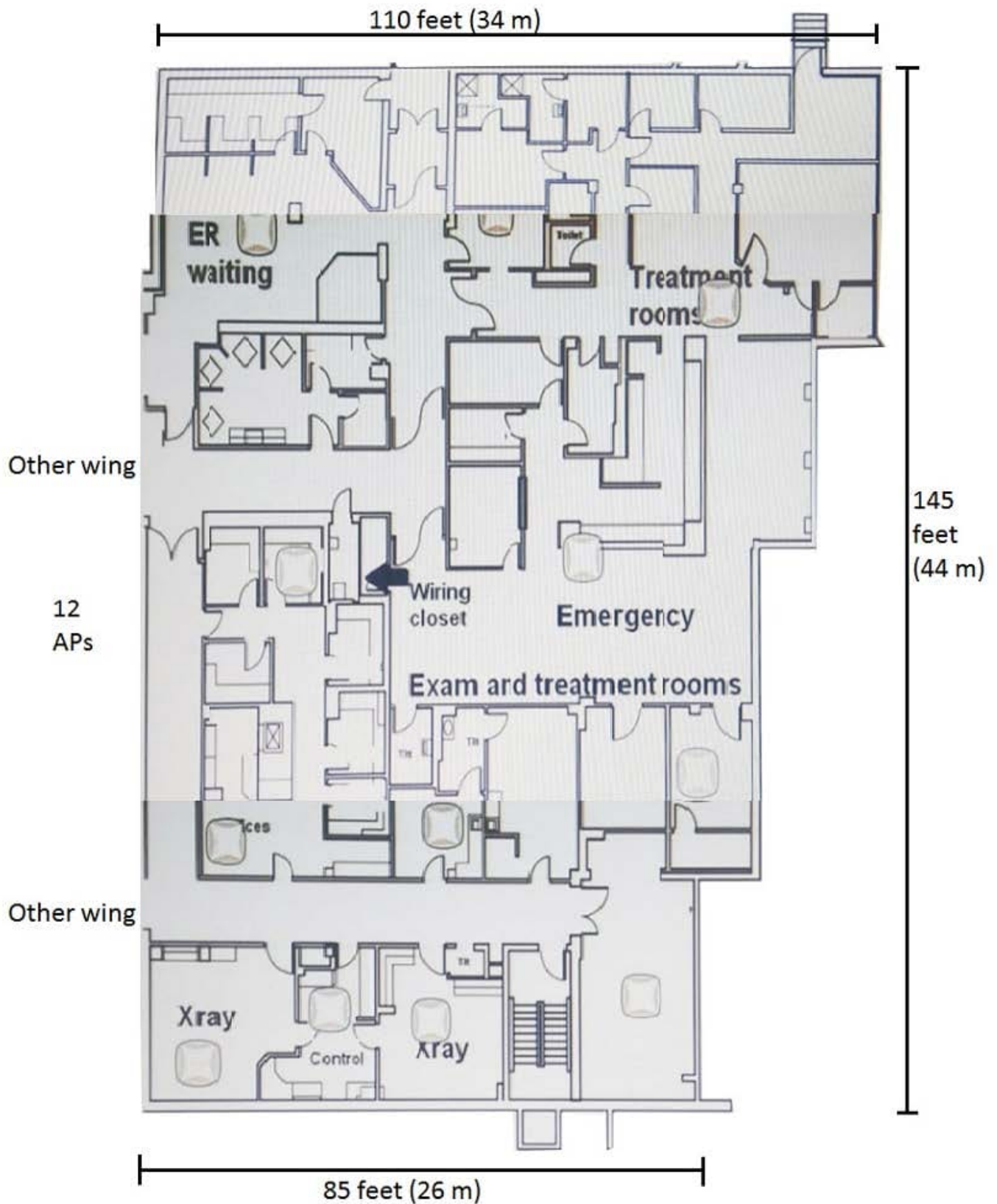
B.



C.



D.



Correct Answer: D



QUESTION 3

An indoor sports stadium has 5,000 seats in two rings:

The stadium has a ceiling height of 60 feet (18m).

There is a catwalk around the perimeter of the court, between the court and the seating areas. This catwalk is 40 feet (12m) from the floor.

There are two scoreboards at either end of the stadium.

The construction of the stadium is concrete and steel.

The customer does not want an under-seat, pico cell deployment, and the customer requires 802.11ac Wave 2.

Which AP model is appropriate to provide coverage in the main stadium bowl?

- A. AP-228
- B. AP-344
- C. AP-365
- D. AP-375

Correct Answer: A

QUESTION 4

What is one reason that an architect might choose to use pico-cell coverage rather than overhead in a stadium?

- A. to avoid major rewiring and construction concerns
- B. to save money by using less powerful and less expensive APs in the deployment
- C. to support a higher device density with a higher level of channel reuse
- D. to maximize coverage per-AP through the use of calculated directional antennas

Correct Answer: C

QUESTION 5

A customer has Aruba network infrastructure devices that could be managed by either Aruba Central or Aruba AirWave.

Which customer characteristic should point the architect toward an AirWave recommendation as opposed to a Central recommendation?



- A. desire to lease managed services on an ongoing basis
- B. small IT staff and preference for cloud solutions
- C. policies that network management occurs on premises
- D. need to support Zero Touch Provisioning (ZTP)

Correct Answer: C

[HPE6-A49 VCE Dumps](#)

[HPE6-A49 Practice Test](#)

[HPE6-A49 Braindumps](#)