



HPE6-A68^{Q&As}

Aruba Certified ClearPass Professional (ACCP) V6.7

Pass HP HPE6-A68 Exam with 100% Guarantee

Free Download Real Questions & Answers **PDF** and **VCE** file from:

<https://www.geekcert.com/hpe6-a68.html>

100% Passing Guarantee
100% Money Back Assurance

Following Questions and Answers are all new published by HP Official Exam Center

- ⚙️ **Instant Download** After Purchase
- ⚙️ **100% Money Back** Guarantee
- ⚙️ **365 Days** Free Update
- ⚙️ **800,000+** Satisfied Customers





QUESTION 1

Which statement accurately describes configuration of Data and Management ports on the ClearPass appliance?
(Select two.)

- A. Configuration of the management port is optional.
- B. Configuration of the management port is mandatory.
- C. Configuration of the data port is mandatory.
- D. Configuration of the data port is optional.
- E. Static IP addresses are only allowed on the management port, not the data port.

Correct Answer: BD

QUESTION 2

Refer to the exhibit.

Configuration » Services » Edit - CompanyX Onboard Authorization

Services - CompanyX Onboard Authorization

Summary Service Authentication Roles Enforcement

Use Cached Results: ☐ Use cached Roles and Posture attributes from previous sessions

Enforcement Policy: CompanyX Onboard Authorization Policy [Modify](#) [Add new En](#)

Enforcement Policy Details

Description: Sample policy controlling authorization during Onboard provisioning

Default Profile: [Deny Access Profile]

Rules Evaluation Algorithm: evaluate-all

Conditions	Enforcement Profiles
1. (Date:Day-of-Week BELONGS TO) Monday, Tuesday, Wednesday, Thursday, Friday, Saturday, Sunday	[Allow Access Profile], [Aruba Terminate Session]

Based on the configuration of the Enforcement Profiles in the Onboard Authorization service shown, which Onboarding action will occur?

- A. The device will be disconnected from the network after Onboarding so that an EAP-TLS authentication is not performed.
- B. The device will be disconnected from and reconnected to the network after Onboarding is completed.
- C. The device's onboarding authorization request will be denied.
- D. The device will be disconnected after post-Onboarding EAP-TLS authentication, so a second EAP-TLS authentication is performed.
- E. After logging in on the Onboard web login page, the device will be disconnected from and reconnected to the network before Onboard begins.



Correct Answer: B

QUESTION 3

Refer to the exhibit.

Home » Guest » Manage Accounts

Manage Guest Accounts

The following table shows the guest accounts that have been created. Click an account to modify it.

Quick Help Create More Options

Filter:

Username	Role	State	Activation	Expiration
12063775	[Guest]	Expired	2015-08-27 00:19	Expired
128962798	[Guest]	Expired	2015-08-27 00:19	Expired
def@mycomany.com	[Guest]	Disabled	2015-08-22 20:51	Expired
donald@arubanetworks.com	[Guest]	Expired	2015-08-31 18:28	Expired
donald@disney.com	[Guest]	Disabled	2015-09-02 06:42	Expired
donald@duck.com	[Executive Guest]	Active	2015-08-26 19:19	Not expiry
Kevin@ mycomany.com	[Guest]	Disabled	2015-06-28 00:12	Expired

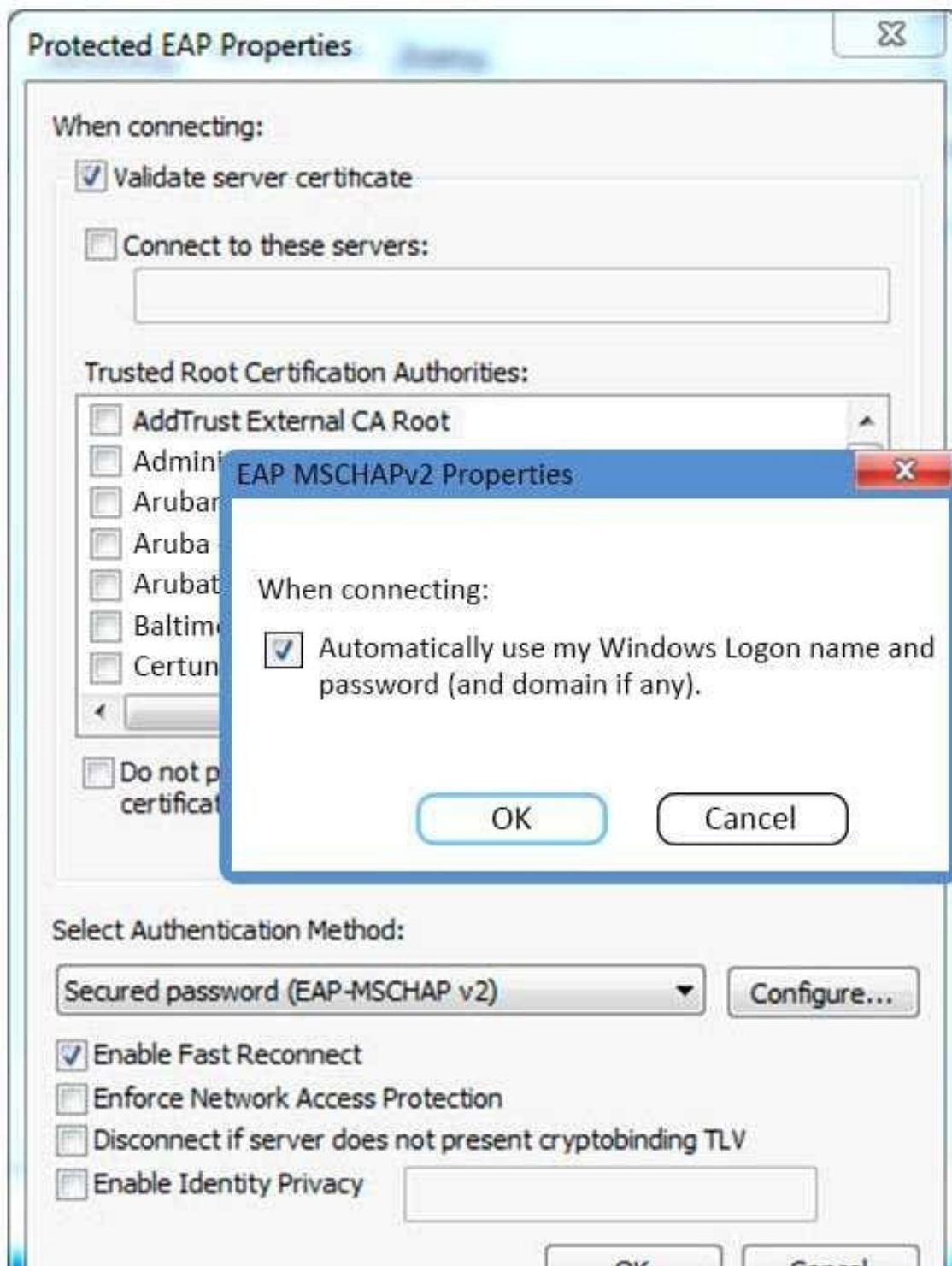
An administrator logs in to the Guest module in ClearPass and 'Manage Accounts\' displays as shown. When a user with username donald@disney.com attempts to access the Web Login page, what will be the outcome?

- A. The user will be able to log in and authenticate successfully but will then be immediately disconnected.
- B. The user will be able to log in for the next 4.9 days, but then will no longer be able to log in.
- C. The user will not be able to log in and authenticate.
- D. The user will be able to log in and authenticate successfully, but will then get a quarantine role.
- E. The user will not be able to access the Web Login page.

Correct Answer: C

QUESTION 4

Refer to the exhibit.



Based on the configuration of a Windows 802.1X supplicant shown, what will be the outcome when 'Automatically use my Windows logon name and password' are selected?

- A. The client will use machine authentication.
- B. The client's Windows logon username and password will be sent inside a certificate to the Active Directory server.
- C. The client's Windows logon username and password will be sent to the Authentication server.



- D. The client will need to re-authenticate every time they connect to the network.
- E. The client will prompt the user to enter the logon username and password.

Correct Answer: C

QUESTION 5

Why is a terminate session enforcement profile used during posture checks with 802.1x authentication?

- A. To send a RADIUS CoA message from the ClearPass server to the client
- B. To disconnect the user for 30 seconds when they are in an unhealthy posture state
- C. To blacklist the user when they are in an unhealthy posture state
- D. To force the user to re-authenticate and run through the service flow again
- E. To remediate the client applications and firewall so that updates can be installed

Correct Answer: A

[HPE6-A68 PDF Dumps](#)

[HPE6-A68 Exam Questions](#)

[HPE6-A68 Braindumps](#)