



HPE6-A71^{Q&As}

Aruba Certified Mobility Professional Exam

Pass HP HPE6-A71 Exam with 100% Guarantee

Free Download Real Questions & Answers **PDF** and **VCE** file from:

<https://www.geekcert.com/hpe6-a71.html>

100% Passing Guarantee
100% Money Back Assurance

Following Questions and Answers are all new published by HP Official Exam Center

-  **Instant Download** After Purchase
-  **100% Money Back** Guarantee
-  **365 Days** Free Update
-  **800,000+** Satisfied Customers





QUESTION 1

Refer to the exhibit.



An administrator configures policies to allow RAPs to connect to the corporate office and remote users to access resources. Which function does the VPN address pool serve in this situation?

- A. Assigns an inner IP address to the RAP used within the VPN
- B. Assigns a public IP address that the RAP should use on its internet port
- C. Assigns IP addresses for remote users
- D. Assigns a DHCP address pool for the RAP

Correct Answer: A

QUESTION 2

An administrator implements a cluster of four Aruba Mobility Controllers (MCs) managed by a Mobility Master (MM). An AP Group is configured with two VAPs and deployed to an AP that will connect to the cluster. Each AP contains two radios.

How many GRE tunnels will be built from the AP to the Active AP Anchor Controller (A- AAC)?

- A. 2



- B. 4
- C. 5
- D. 8

Correct Answer: A

QUESTION 3

An administrator implements per-user tunneled node that involves ArubaOS-Switches and Aruba Mobility Controllers (MCs). What always happens when a wired client connects to the network?

- A. All switch traffic is tunneled to the controller.
- B. The switch performs user authentication.
- C. The tunnel fails unless VMCs are used.
- D. Wired users map to an AAA profile on the controller.

Correct Answer: D

QUESTION 4

Refer to the exhibits.

Exhibit 1: WLAN VAP configuration

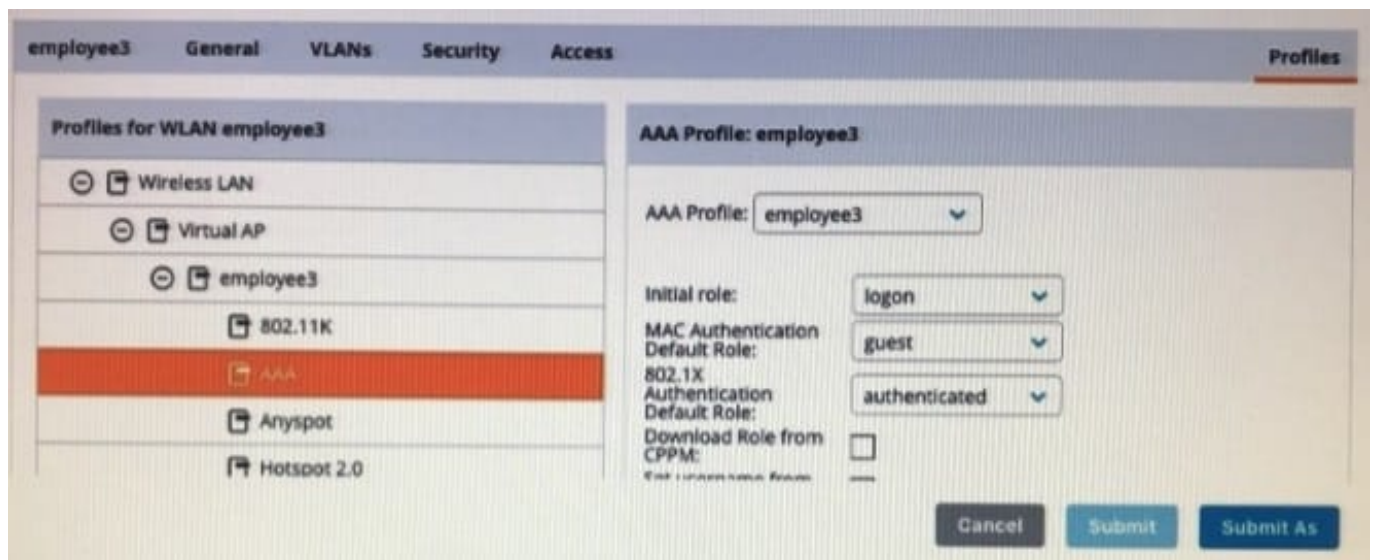


Exhibit 2: Microsoft NPS server configuration

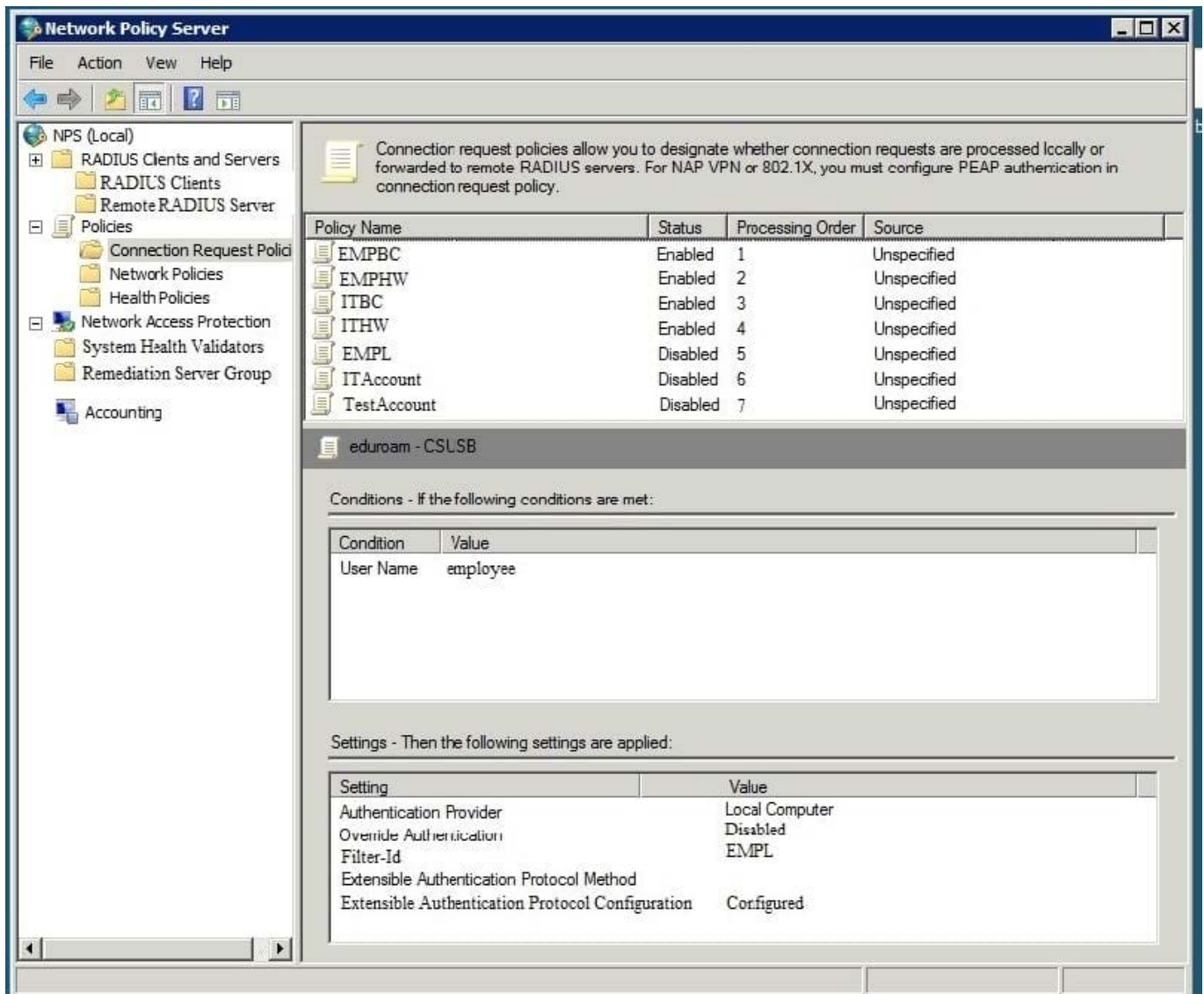


Exhibit 3: Server group configuration for the VAP.



| | | | | | | |
|----------------|-------------------------------------|--------------|-------------------|-------------------|---------------------|----------|
| Dashboard | <u>Auth Servers</u> | AAA Profiles | L2 Authentication | L3 Authentication | User Rules | Advanced |
| Configuration | Server Groups 4 | | | | | |
| WLANs | NAME | SERVERS | FAIL THROUGH | LOAD BALANCE | SERVER RULES | |
| Roles&Policies | default | 1 | - | - | 1 | |
| Access Points | internal | 1 | - | - | 1 | |
| AP Groups | <u>Server-Group-Aruba</u> | <u>3</u> | - | - | <u>2</u> | |
| | employee | 1 | - | - | 0 | |
| Authentication | + | | | | | |
| Services | Server Group>Server-Group-Aruba-HPE | | Servers | Options | <u>Server Rules</u> | |
| Interfaces | | | | | | |
| Controllers | ATTRIBUTE | OPERATION | OPERAND | TYPE | ACTION | VALUE |
| System | Filter-Id | value-of | - | string | set role | - |
| Tasks | Filter-Id | equals | corporate | string | set role | employee |

An employee authenticates with the username employee and the correct password. However, once the user authenticates, an administrator notices that the employee is assigned the authenticated role and not the desired employee role.

What should the administrator do to solve this problem?

- A. Add a new server group rule on the controller.
- B. Associate the user to the employee group in Microsoft NPS.
- C. Change the server group name on the controller.
- D. Reference the employee role in the WLAN VAP on the controller.

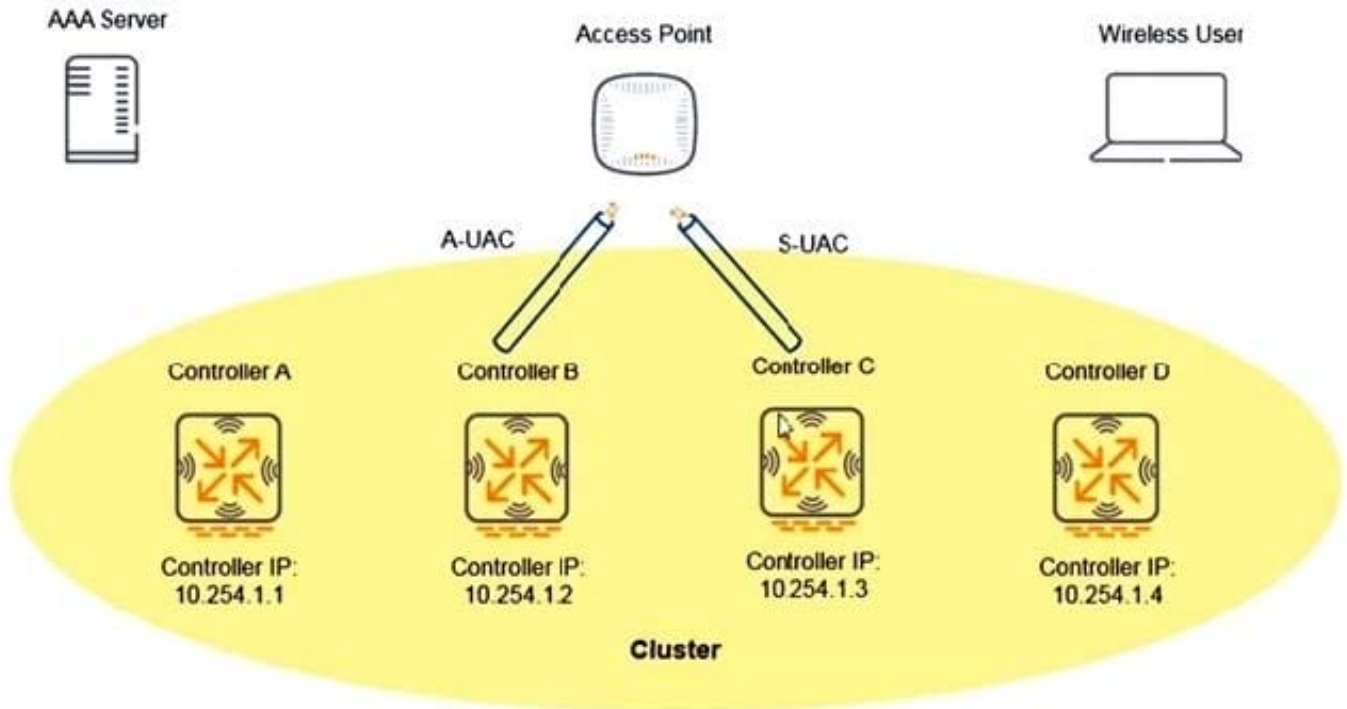
Correct Answer: A

We have to add new rule:

Filter-Id - equals - EMPL - string - set role - employee

QUESTION 5

Refer to the exhibit.



An administrator implements an L2 cluster of Aruba Mobility Controllers (MCs) as shown in the exhibit. An external RADIUS AAA server authentication clients associated with the Active User Anchor Controller (A UAC), where the NAS IP address sent from Controller B is 10.254.1.2.

By default, what happens to the user's session when it is handed over to the Standby UAC (S-UAC) after a failover?

- A. The user's session remains active and RADIUS messages can still be processed between the S-UAC and AAA server.
- B. The user's session remains active, but the AAA server cannot implement RADIUS Change of Authorization (CoA).
- C. The user's session is disconnected and has to reconnect, but the S-UAC automatically updates the NAS-IP address on the AAA server to record the event.
- D. The user's session is disconnected and has to reconnect, and no record of this process is stored on the AAA server.

Correct Answer: A

[HPE6-A71 PDF Dumps](#)

[HPE6-A71 Practice Test](#)

[HPE6-A71 Exam Questions](#)