



# HPE6-A73<sup>Q&As</sup>

Aruba Certified Switching Professional

**Pass HP HPE6-A73 Exam with 100% Guarantee**

Free Download Real Questions & Answers **PDF** and **VCE** file from:

<https://www.geekcert.com/hpe6-a73.html>

100% Passing Guarantee  
100% Money Back Assurance

Following Questions and Answers are all new published by HP Official Exam Center

- ⚙️ **Instant Download** After Purchase
- ⚙️ **100% Money Back** Guarantee
- ⚙️ **365 Days** Free Update
- ⚙️ **800,000+** Satisfied Customers





### QUESTION 1

An administrator has an AOS-CX switch configured with:

router ospf 1

area 0

area 1 stub no-summary

It is the only ABR for area 1. The switch has the appropriate adjacencies to routing switches in areas 0 and 1.

The current routes in each area are:

Area 0: 5 routes (LSA Type 1 and 2)

Area 1: 10 routes (LSA Type 1 and 2)

External routes: 2 (LSA Type 5)

Based on the above configuration, how many OSPF routes will routing switches see in Area 1?

- A. 15
- B. 6
- C. 11
- D. 12

Correct Answer: C

---

### QUESTION 2

Which concept is implemented using Aruba's dynamic segmentation?

- A. Root of trust
- B. Device fingerprinting
- C. Zero Touch Provisioning
- D. Colorless port

Correct Answer: D

---

### QUESTION 3

A network administrator needs to replace an antiquated access layer solution with a modular solution involving AOS-CX switches. The administrator wants to leverage virtual switching technologies. The solution needs to support high-availability with dual-control planes.



Which solution should the administrator implement?

- A. AOS-CX 8325
- B. AOS-CX 6300
- C. AOS-CX 6400
- D. AOS-CX 8400

Correct Answer: C

Reference: <https://andovercg.com/datasheets/aruba-cx-8325-switch-series.pdf>

---

#### QUESTION 4

An administrator wants to implement dynamic segmentation policies. The network consists of AOS-CX and Aruba gateways.

Which type of forwarding should the administrator implement for users that already connect via wireless, but will also be connecting on Ethernet switch ports?

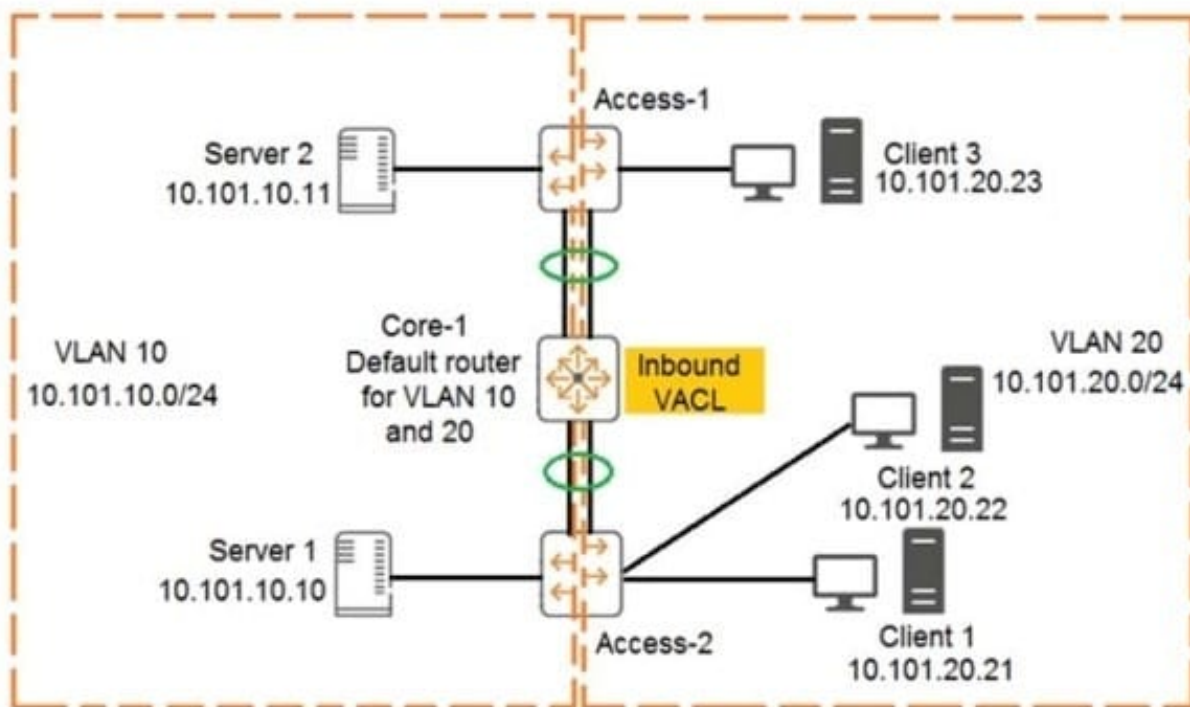
- A. User-based tunneling (UBT)
- B. Port-based tunneling (PBT)
- C. Switch-to-switch tunneling (SST)
- D. Local switching

Correct Answer: A

---

#### QUESTION 5

Examine the network exhibit:



The ACL configuration defined on Core-1 is as follows:

```
Core-1(config)# access-list ip example
Core-1(config-acl-ip)# permit ip 10.101.20.21/32 any eq 23
Core-1(config-acl-ip)# permit ip 10.101.20.21/32 eq 23 any
Core-1(config-acl-ip)# exit
Core-1(config)# vlan 20
Core-1(config-if)# apply access-list example in
```

The ACL configuration defined on Core-1 is as follows:

If telnet was being used, which device connection would be permitted and functional in both directions? (Choose two.)

- A. Client 3 to Client 2
- B. Client 1 to Client 2
- C. Server 2 to Client 2
- D. Server 1 to Client 1
- E. Client 1 to Client 3

Correct Answer: BD

CL3 - CL2 - drop on forward path by core1 cause match VLAN 20 and CL3 not CL1 as SRC IP CL1 - CL2 - pass - no ACL cause forwarded by Access2 SR2 - CL2 - pass on forward path by core1 cause match VLAN 10 Drop on return path by core1 cause match VLAN 20 and no CL1 as SRC IP SR1 - CL1 - pass on forward path by core1 cause match VLAN 10 pass on return path by core1 cause match VLAN 20 and CL1 as SRC IP CL1 - CL3 - pass on forward path by core1 cause match VLAN 20 and CL1 as SRC IP drop on return path by core1 cause match VLAN 20 and not CL1 but CL3 as SRC IP



VCE & PDF

GeekCert.com

<https://www.geekcert.com/hpe6-a73.html>

2024 Latest geekcert HPE6-A73 PDF and VCE dumps Download

---

[HPE6-A73 PDF Dumps](#)

[HPE6-A73 Practice Test](#)

[HPE6-A73 Exam Questions](#)