



HPE6-A73^{Q&As}

Aruba Certified Switching Professional

Pass HP HPE6-A73 Exam with 100% Guarantee

Free Download Real Questions & Answers **PDF** and **VCE** file from:

<https://www.geekcert.com/hpe6-a73.html>

100% Passing Guarantee
100% Money Back Assurance

Following Questions and Answers are all new published by HP Official Exam Center

- ⚙️ **Instant Download** After Purchase
- ⚙️ **100% Money Back** Guarantee
- ⚙️ **365 Days** Free Update
- ⚙️ **800,000+** Satisfied Customers





QUESTION 1

How does an administrator install a script and create an agent and actions for the Network Analysis Engine running on AOS-CX switches?

- A. Access the switches\' command-line interface.
- B. Access the switches\' web user interface
- C. Use Aruba Central\'s web user interface
- D. Use the NetEdit web user interface

Correct Answer: B

QUESTION 2

Which AOS-CX feature is used to prevent head-on-line (HOL) blocking?

- A. VSF
- B. WFQ
- C. VOQ
- D. VSX

Correct Answer: C

QUESTION 3

A network has two AOS-CX switches connected to two different service providers. The administrator is concerned about bandwidth consumption on the service provider links and learned that the service providers were using the company as a transit AS.

Which feature should the administrator implement to prevent this situation?

- A. Configure route maps and apply them to BGP
- B. Configure the two switches as route reflectors
- C. Configure a classifier policy to disable MED
- D. Configure bi-directional forwarding detection on both switches

Correct Answer: A

**QUESTION 4**

A network administrator needs to replace an antiquated access layer solution with a modular solution involving AOS-CX switches. The administrator wants to leverage virtual switching technologies. The solution needs to support high-availability with dual-control planes.

Which solution should the administrator implement?

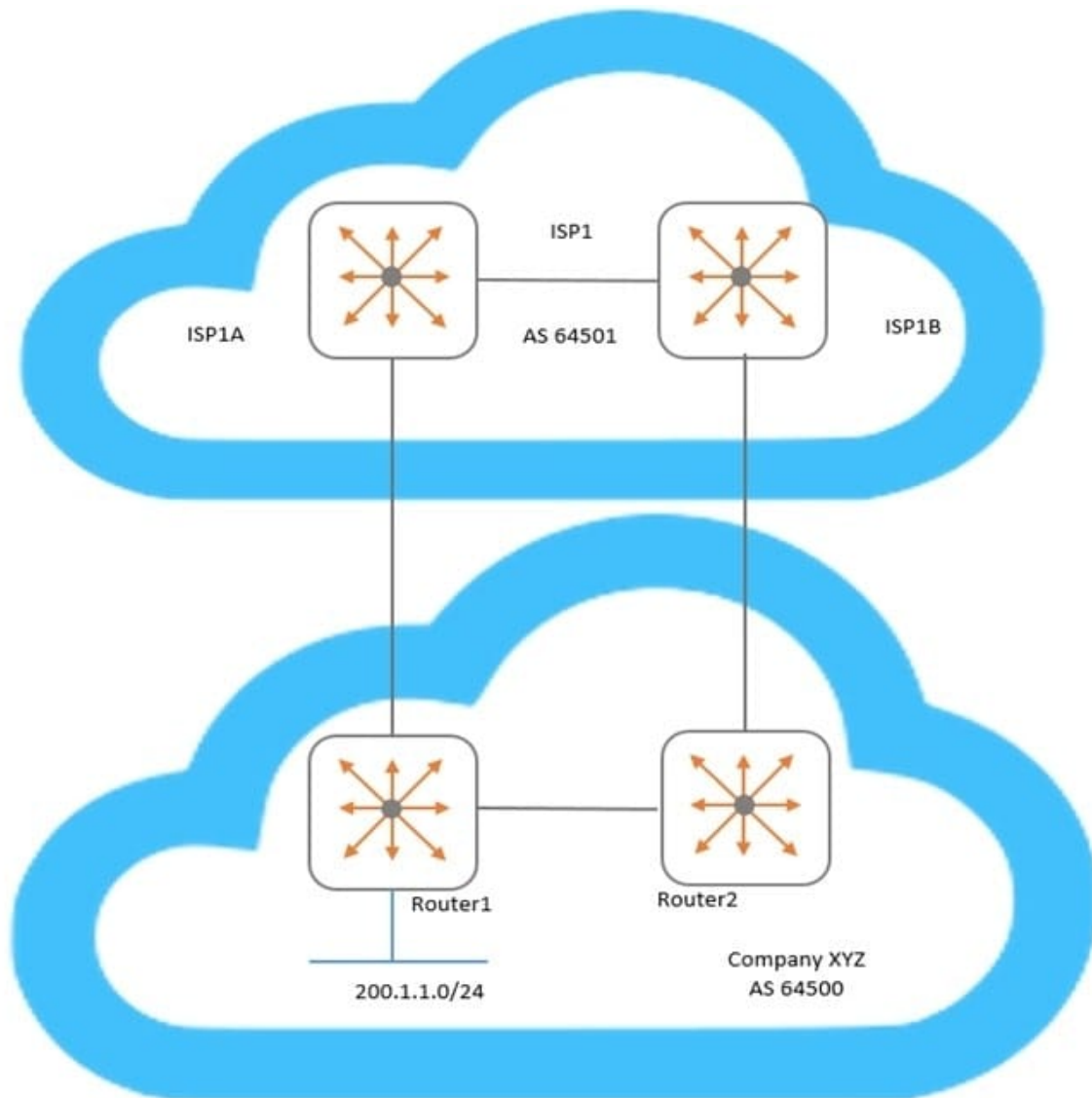
- A. AOS-CX 8325
- B. AOS-CX 6300
- C. AOS-CX 6400
- D. AOS-CX 8400

Correct Answer: C

Reference: <https://andovercg.com/datasheets/aruba-cx-8325-switch-series.pdf>

QUESTION 5

Examine the network topology.



Company XYZ has two connections to a service provider (ISP1). Here is the configuration of Router1:

```
Router1(config)# ip prefix-list AS64500-routes permit 200.1.1.0/24
Router1(config)# route-map To-AS64501 permit seq 10
Router1(config-route-map)# match ip address prefix-list AS64500-routes
Router1(config-route-map)# set metric 100
Router1(config-route-map)# exit
Router1(config)# router bgp 64500
Router1(config-bgp)# address-family ipv4 unicast
Router1(config-bgp-ipv4-uc)# neighbor 192.168.1.1 route-map To-AS64501 out
```

Here is the configuration of Router2:



```
Router2(config)# ip prefix-list AS64500-routes permit 200.1.1.0/24
Router2(config)# route-map To-AS64501 permit seq 10
Router2(config-route-map)# match ip address prefix-list AS64500-routes
Router2(config-route-map)# set metric 200
Router2(config-route-map)# exit
Router2(config)# router bgp 64500
Router2(config-bgp)# address-family ipv4 unicast
Router2(config-bgp-ipv4-uc)# neighbor 192.168.2.1 route-map To-AS64501 out
```

Based on configuration of Router1 and Router2, which BGP metric is being manipulated?

- A. Weight
- B. Multiple exit discriminator
- C. Local preference
- D. AS path length

Correct Answer: B

[HPE6-A73 VCE Dumps](#)

[HPE6-A73 Exam Questions](#)

[HPE6-A73 Braindumps](#)