



HPE6-A79^{Q&As}

Aruba Certified Mobility Expert Written Exam

Pass HP HPE6-A79 Exam with 100% Guarantee

Free Download Real Questions & Answers **PDF** and **VCE** file from:

<https://www.geekcert.com/hpe6-a79.html>

100% Passing Guarantee
100% Money Back Assurance

Following Questions and Answers are all new published by HP Official Exam Center

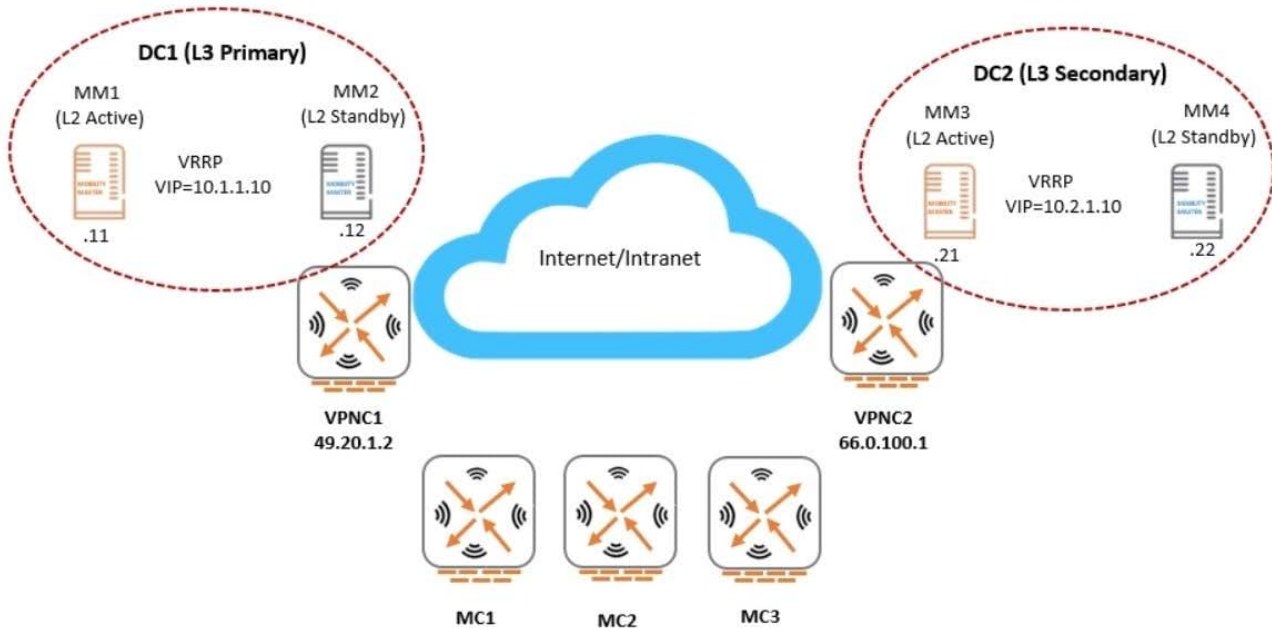
-  **Instant Download** After Purchase
-  **100% Money Back** Guarantee
-  **365 Days** Free Update
-  **800,000+** Satisfied Customers





QUESTION 1

Refer to the exhibit.



```
(MC2) #show running-config | include masterip
Building Configuration...
masterip 10.1.1.10 vpn-ip 19.20.1.2 ipsec aruba123 peer-id xx:xx:xx:xx:xx:xx
secondary masterip 10.2.1.10 vpn-ip 66.0.100.1 ipsec-factory-cert vpn-mac-1 xx:xx:xx:xx:yy:yy interface vlan 140
(MC2) #
```

An Aruba network is deployed with L2 and L3 Mobility Master (MM) redundancy across two datacenters, as shown in the exhibit. The network administrator confirms that all Mobility Controllers (MC) are currently communicating with MM1, which is the L2 Active and, L3 Primary.

Which MM IP will MCs communicate with if MM1 fails?

- A. 10.1.1.10
- B. 10.1.1.12
- C. 10.2.1.10
- D. 10.2.1.21

Correct Answer: C

QUESTION 2

A customer wants a WLAN solution that permits Aps to terminate WPA-2 encrypted traffic from different SSIDs to different geographic locations where non-related IT departments will take care of enforcing security policies. A key requirement is to minimize network congestion, overhead, and delay while providing data privacy from the client to the security policy enforcement point. Therefore, the solution must use the shortest path from source to destination.



Which Aruba feature best accommodates this scenario?

- A. Inter MC S2S IPsec tunnels
- B. RAPs
- C. Multizone Aps
- D. VIA
- E. Inter MC GRE tunnels

Correct Answer: B

QUESTION 3

HOTSPOT

A network administrator wants to receive a major alarm every time a controller or an Aruba switch goes down for either a local or an upstream device failure. Which alarm definition must the network administrator create to accomplish this?

Hot Area:



Trigger

Type:

Severity:

Limit by number of down events: Yes No

Send Alerts for Thin APs when Controller is Down: Yes No

Send Alerts when Upstream Device is Down: Yes No

Send Alerts on Reboot: Yes No
Include reboots detected by uptime reset or reboot count increase

Conditions

Matching conditions: All Any

New Trigger condition

OPTION	CONDITION	VALUE
<input type="text" value="Device Type"/> <input type="button" value="v"/>	<input type="text" value="is"/> <input type="button" value="v"/>	<input type="text" value="Router/Switch"/> <input type="button" value="v"/> <input type="button" value="trash"/>
<input type="text" value="Device Type"/> <input type="button" value="v"/>	<input type="text" value="is"/> <input type="button" value="v"/>	<input type="text" value="Controller"/> <input type="button" value="v"/> <input type="button" value="trash"/>

Trigger Restrictions

Folder:

Include Subfolders: Yes No

Group:

Alert Notifications

Correct Answer:



Trigger

Type:

Severity:

Limit by number of down events: Yes No

Send Alerts for Thin APs when Controller is Down: Yes No

Send Alerts when Upstream Device is Down: Yes No

Send Alerts on Reboot: Yes No
Include reboots detected by uptime reset or reboot count increase

Conditions

Matching conditions: All Any

New Trigger condition

OPTION	CONDITION	VALUE
<input type="text" value="Device Type"/>	<input type="text" value="is"/>	<input type="text" value="Router/Switch"/>
<input type="text" value="Device Type"/>	<input type="text" value="is"/>	<input type="text" value="Controller"/>

Trigger Restrictions

Folder:

Include Subfolders: Yes No

Group:

Alert Notifications

QUESTION 4

Refer to the exhibits. Exhibit 1

3 Controllers	2 Access Devices	0 Uplinks	1 Cluster	
NAME ▲	STATUS	HEALTH	UPTIME	SOFTWARE
> MC14-1	Down	Poor	1w 4d	8.6.0.2

Exhibit 2



(MC14-1) *#show cpu load current

```
top2 - 22:23:48 up 6:11, 0 users, load average: 0.11, 0.10, 0.08
Tasks: 202 total, 2 running, 198 sleeping, 0 stopped, 2 zombie
Cpu(s): 1.2%us, 2.9%sy, 0.2%ni, 95.6%id, 0.1%wa, 0.0%hi, 0.1%si, 0.0%st
Mem: 3085600k total, 1831312k used, 1254288k free, 19488k buffers
Swap: 1048544k total, 0k used, 1048544k free, 889680k cached
```

PID	USER	PR	NI	VIRT	RES	SHR	S	%CPU	%MEM	TIME+	COMMAND
3556	root	20	0	147m	79m	15m	R	85	2.7	0:39.54	profmgr
3017	root	20	0	9472	3952	2656	S	23	0.1	1:30.44	syslogd
3565	root	10	-10	132m	36m	13m	S	15	1.2	0:37.09	auth
4007	root	20	0	68208	8896	5920	S	10	0.3	0:23.41	ofa
3497	root	20	0	334m	137m	10m	S	6	4.6	11:31.80	fpapps
3894	root	20	0	124m	23m	5472	S	6	0.8	0:10.00	dds
4125	root	20	0	52640	6496	3296	S	6	0.2	0:28.97	vrrp
13	root	20	0	0	0	0	S	4	0.0	0:02.05	events/1
3583	root	20	0	173m	25m	9696	S	4	0.8	1:47.79	stm
12505	root	20	0	3104	1680	1248	R	4	0.1	0:00.03	top2
3511	root	20	0	51088	6288	3712	S	2	0.2	0:04.90	pim
3807	root	20	0	220m	71m	5568	S	2	2.4	0:18.20	fw_visibility
1	root	20	0	4160	1104	912	S	0	0.0	0:03.13	init
2	root	20	0	0	0	0	S	0	0.0	0:00.00	kthreadd

A network administrator adds a new Mobility Controller (MC) to the production Mobility Master (MM) and deploys APs that start broadcasting the employee SSID in the West wing of the building. Suddenly, the employees report client

disconnects. When accessing the MM the network administrator notices that the MC is unreachable, then proceeds to access the MC's console and obtains the outputs shown in the exhibits.

What should the network administrator do next to solve the current problem?

- A. Open a TAC case and send the output of tar crash.
- B. Kill two zombie processes then reboot the MC.
- C. Verify the license pools in the MM.
- D. Decommission the MC from the MM, and add it again.

Correct Answer: C

QUESTION 5

Refer to the exhibit: A company acquires ten barcode scanners to run inventory tasks. These WiFi devices support WPA2-PSK security only. The network administrator deploys a WLAN named scanners using the configuration shown in the exhibit. What must the network administrator do next to ensure that the scanner devices successfully connect to their SSID?



New WLAN



More Secure

Enterprise

Personal

Open

Less Secure

Key management: WPA3-personal

Enable backward compatibility

Passphrase: [dots]

Retype: [dots]

MAC authentication: Enabled

Blacklisting:

New WLAN



Default role: logon

MAC authentication role: scanners

Show roles

- A. Set internal as the MAC authentication server group.
- B. Add scanner MAC addresses in user derivation rules.
- C. Enable L2 Authentication Fail Through.



D. Add scanner MAC addresses in the internal database.

Correct Answer: D

[HPE6-A79 PDF Dumps](#)

[HPE6-A79 Study Guide](#)

[HPE6-A79 Braindumps](#)