



JN0-212^{Q&As}

Cloud-Associate (JNCIA-Cloud)

Pass Juniper JN0-212 Exam with 100% Guarantee

Free Download Real Questions & Answers **PDF** and **VCE** file from:

<https://www.geekcert.com/jn0-212.html>

100% Passing Guarantee
100% Money Back Assurance

Following Questions and Answers are all new published by Juniper
Official Exam Center

-  **Instant Download** After Purchase
-  **100% Money Back** Guarantee
-  **365 Days** Free Update
-  **800,000+** Satisfied Customers





QUESTION 1

Which protocol is used to transport monitoring data in Juniper's open and extensible data model?

- A. TCP
- B. SNMP
- C. SOAP
- D. UDP

Correct Answer: D

QUESTION 2

You want to prevent a single point of failure in your underlay network. Which two protocols would be used to accomplish this task? (Choose two)

- A. LACP
- B. VSTP
- C. MC-LAG
- D. RSTP

Correct Answer: AC

QUESTION 3

You are required to set up zero-day malware dedication for your private cloud without sending files off site for analysis.

What will accomplish this task?

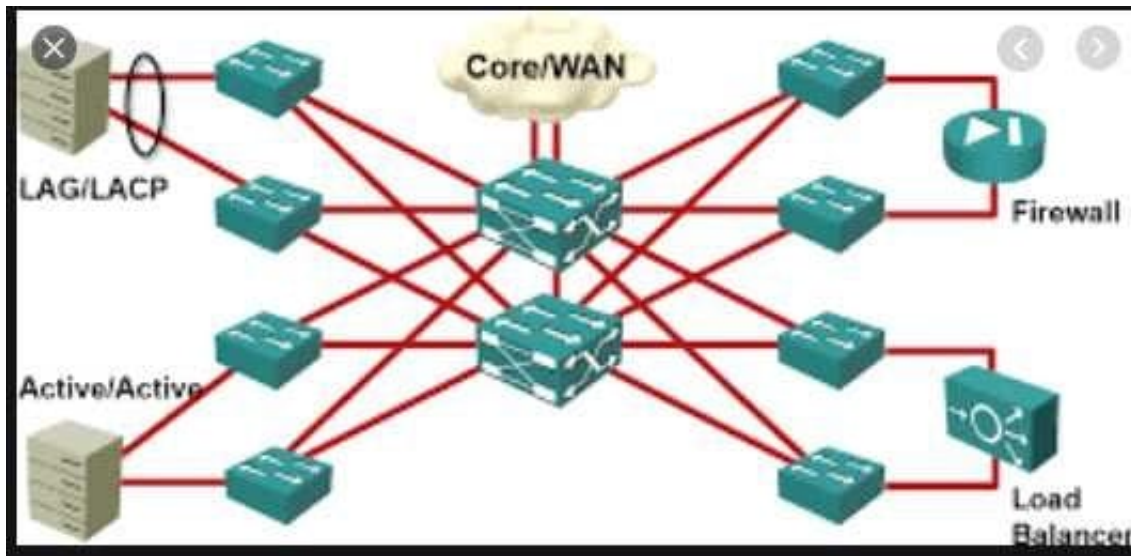
- A. JATP
- B. IDP
- C. UTM
- D. Sky ATP

Correct Answer: D

QUESTION 4



Exhibit: Which type of the topology is shown in the exhibit?



- A. EGP topology
- B. spine-and-leaf topology
- C. tree topology
- D. hub-and-spoke topology

Correct Answer: B

QUESTION 5

Which type of SDN are you using when you automate a Junos device using PyEZ and NETCONF?

- A. API-based SDN
- B. SDN as an overlay
- C. SDN as an underlay
- D. OpenFlow-based SDN

Correct Answer: A

[Latest JN0-212 Dumps](#)

[JN0-212 PDF Dumps](#)

[JN0-212 Braindumps](#)