



JN0-349^{Q&As}

Enterprise Routing and Switching - Specialist (JNCIS-ENT)

Pass Juniper JN0-349 Exam with 100% Guarantee

Free Download Real Questions & Answers **PDF** and **VCE** file from:

<https://www.geekcert.com/jn0-349.html>

100% Passing Guarantee
100% Money Back Assurance

Following Questions and Answers are all new published by Juniper
Official Exam Center

-  **Instant Download** After Purchase
-  **100% Money Back** Guarantee
-  **365 Days** Free Update
-  **800,000+** Satisfied Customers





QUESTION 1

Exhibit.



Exhibit



```
user@host> show route hidden detail
inet.0: 25 destinations, 26 routes (24 active, 0 holddown, 1
hidden)
Restart Complete
127.0.0.1/32 (1 entry, 0 announced)
    Direct Preference: 0
        Next hop type: Interface
        Next-hop reference count: 1
        Next hop: via lo0.0, selected
        State: <Hidden Martian Int>
        Local AS:      1
        Age: 4:27:37
        Task: IF
        AS path: I

private1__inet.0: 2 destinations, 3 routes (2 active, 0
holddown, 0 hidden)

red.inet.0: 6 destinations, 8 routes (4 active, 0 holddown, 3
hidden)
Restart Complete

10.5.5.5/32 (1 entry, 0 announced)
    BGP      Preference: 170/-101
        Route Distinguisher: 10.4.4.4:4
        Next hop type: Unusable
        Next-hop reference count: 6
        State: <Secondary Hidden Int Ext>
        Local AS:      1 Peer AS:      1
        Age: 3:45:09
        Task: BGP_1.10.4.4.4+2493
        AS path: 100 I
        Communities: target:1:999
        VPN Label: 100064
        Localpref: 100
        Router ID: 10.4.4.4
        Primary Routing Table bgp.13vpn.0
```



Referring to the exhibit, why is the route for 10.5.5.5 hidden?

- A. It is an L3VPN route.
- B. The next hop cannot be resolved.
- C. It has an invalid community.
- D. It is a Martian route.

Correct Answer: B

QUESTION 2

Your BGP router receives routes from two upstream ISPs: ISP A and ISP B. In this scenario, which change would you make to prefer routes from ISP A?

- A. Set the local-preference attribute for all routes received from ISP A to 200 while all routes received from ISP B use the default local-preference value of 100.
- B. Prepend the AS path to all routes received from ISP A while all routes received from ISP B use the default AS path value.
- C. Change the MED value for all routes received from ISP A to 1 while all routes from ISP B remain configured with no MED value.
- D. Set the local-preference attribute for all routes received from ISP A to 50 while all routes received from ISP B use the default local-preference value of 100.

Correct Answer: A

QUESTION 3

Which two statements about a Virtual Chassis are correct? (Choose two.)

- A. A Virtual Chassis is managed using a single virtual console port.
- B. You must use the same EX Series switch for all members in a Virtual Chassis.
- C. All members in a Virtual Chassis must be running the same Junos version.
- D. Each device must be managed separately.

Correct Answer: AC

QUESTION 4

Which two statements about RSTP are correct? (Choose two.)

- A. RSTP is backward compatible with STP.

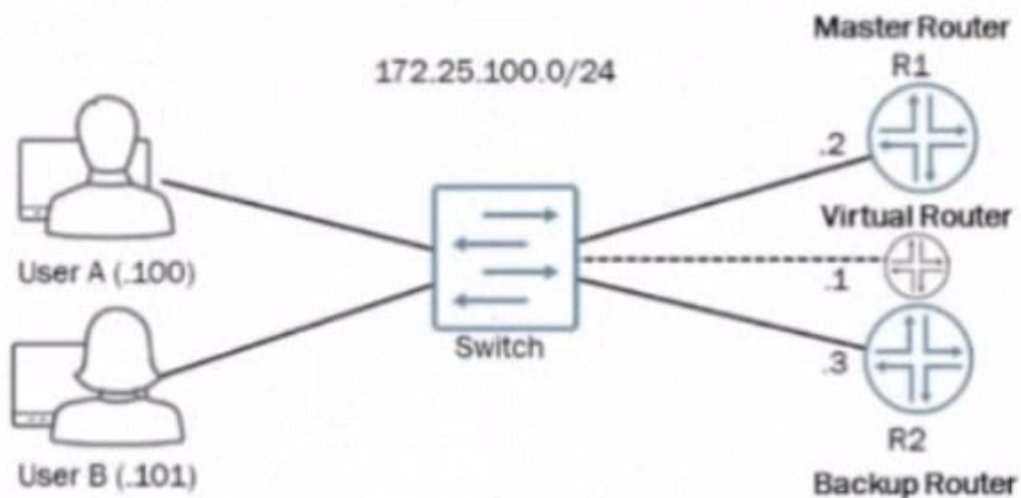


- B. RSTP permits multiple root bridges within a Layer 2 domain.
- C. RSTP permits only a single root bridge within a Layer 2 domain.
- D. RSTP is not backward compatible with STP.

Correct Answer: AC

QUESTION 5

Exhibit.



```
user@R1# show interface ge-0/0/0.0
family inet {
    address 172.25.100.2/24 {
        vrrp-group 10 {
            virtual-address
172.25.100.1;
            accept-data;
            priority 200;
        }
    }
}
```

```
user@R2# show interface ge-0/0/0.0
family inet {
    address 172.25.100.3/24 {
        vrrp-group 20 {
            virtual-address
172.25.100.1;
            accept-data;
            priority 300;
        }
    }
}
```

You are attempting to set up VRRP with R1 and R2 being participating members. You want R1 to be the master router



and R2 to be the backup router with the virtual router they create being at address 172.25.100.1. The virtual router is not pinging from either User A or User B.

Referring to the exhibit, what must be done to correct the problem?

- A. The VRRP group value on R1 and R2 must match.
- B. A VRRP authentication type value is needed on R1 and R2.
- C. A VRRP policy is needed on R1 and R2.
- D. The VRRP priority value on R1 and R2 must match

Correct Answer: A

https://www.juniper.net/documentation/en_US/junos/topics/reference/configuration-statement/priority-edit-interfaces-vrrp.html

[Latest JN0-349 Dumps](#)

[JN0-349 Practice Test](#)

[JN0-349 Braindumps](#)