



JN0-361^{Q&As}

Service Provider Routing and Switching, Specialist Exam

Pass Juniper JN0-361 Exam with 100% Guarantee

Free Download Real Questions & Answers **PDF** and **VCE** file from:

<https://www.geekcert.com/jn0-361.html>

100% Passing Guarantee
100% Money Back Assurance

Following Questions and Answers are all new published by Juniper
Official Exam Center

- ⚙️ **Instant Download** After Purchase
- ⚙️ **100% Money Back** Guarantee
- ⚙️ **365 Days** Free Update
- ⚙️ **800,000+** Satisfied Customers





QUESTION 1

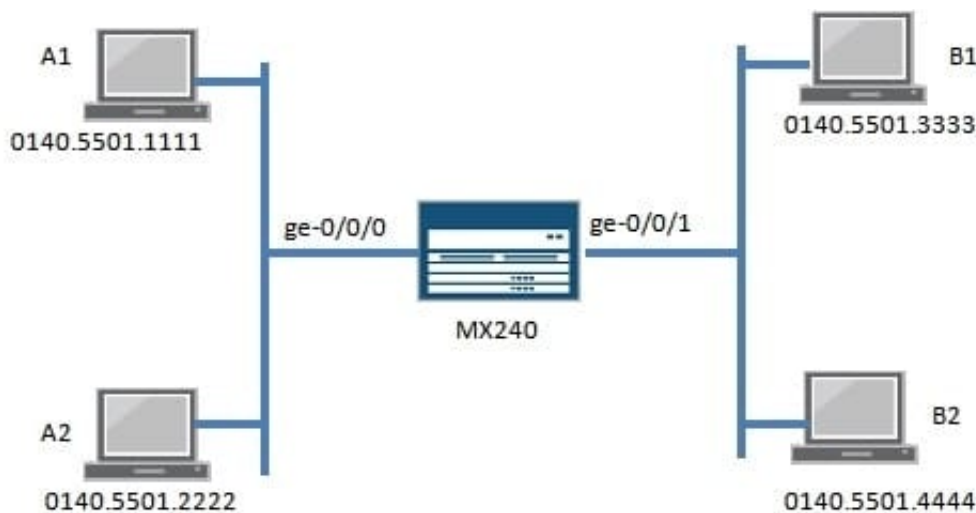
Which two statements regarding the MPLS label information base are correct? (Choose two.)

- A. The MPLS label information base is stored in the inet.3 table.
- B. The MPLS label information base is stored in the mpls.0 table.
- C. The label information base is used by all LSRs to forward LSP traffic.
- D. The label information base is used by transit LSRs to forward LSP traffic.

Correct Answer: BD

QUESTION 2

-- Exhibit -



-- Exhibit -

Click the Exhibit button.

In the exhibit, A1 sends a broadcast frame with destination MAC address FFFF.FFFF.FFFF, and all other stations have sent a response .

What would be the correct MAC address table on the MX240? ge-0/0/0 0140.5501.1111

- A. ge-0/0/0 FFFF.FFFF.FFFF
- B. ge-0/0/0 FFFF.FFFF.FFFF
- C. ge-0/0/0 0140.5501.2222 ge-0/0/1 0140.5501.3333 ge-0/0/1 0140.5501.4444 ge-0/0/0 0140.5501.1111
- D. ge-0/0/0 0140.5501.2222 ge-0/0/1 0140.5501.3333 ge-0/0/1 0140.5501.4444



Correct Answer: D

QUESTION 3

In an RSTP network, which combination of port types can exist on the root bridge?

- A. There can be some combination of designated ports and backup ports
- B. There can be some combination of root ports and alternate ports
- C. All ports will be designated ports
- D. All ports will be root ports

Correct Answer: C

QUESTION 4

You are asked to deploy a large-scale IS-IS network with multiple areas.

Which two statements are true? (Choose two.)

- A. A collection of Level 1 routers in different areas constitute the backbone in the network.
- B. Level 2 routers can route between areas.
- C. Level 1 routers can route between areas.
- D. A collection of Level 2 routers in different areas constitute the backbone in the network.

Correct Answer: BD

QUESTION 5



In the network shown in the exhibit, you want to configure a GRE tunnel on Router B that is destined for Router C.

Which route should be used on Router B to provide reachability to the tunnel destinations?

- A. static route to the loopback address of Router A



B. static route to the loopback address of Router B

C. static route to the loopback address of Router C

D. static route to the loopback address of Router D

Correct Answer: C

A GRE tunnel must have a valid route to the remote tunnel endpoint. In this case, Router B must have a route to Router C

[Latest JN0-361 Dumps](#)

[JN0-361 Study Guide](#)

[JN0-361 Exam Questions](#)