



JN0-647^{Q&As}

Enterprise Routing and Switching Exam

Pass Juniper JN0-647 Exam with 100% Guarantee

Free Download Real Questions & Answers **PDF** and **VCE** file from:

<https://www.geekcert.com/jn0-647.html>

100% Passing Guarantee
100% Money Back Assurance

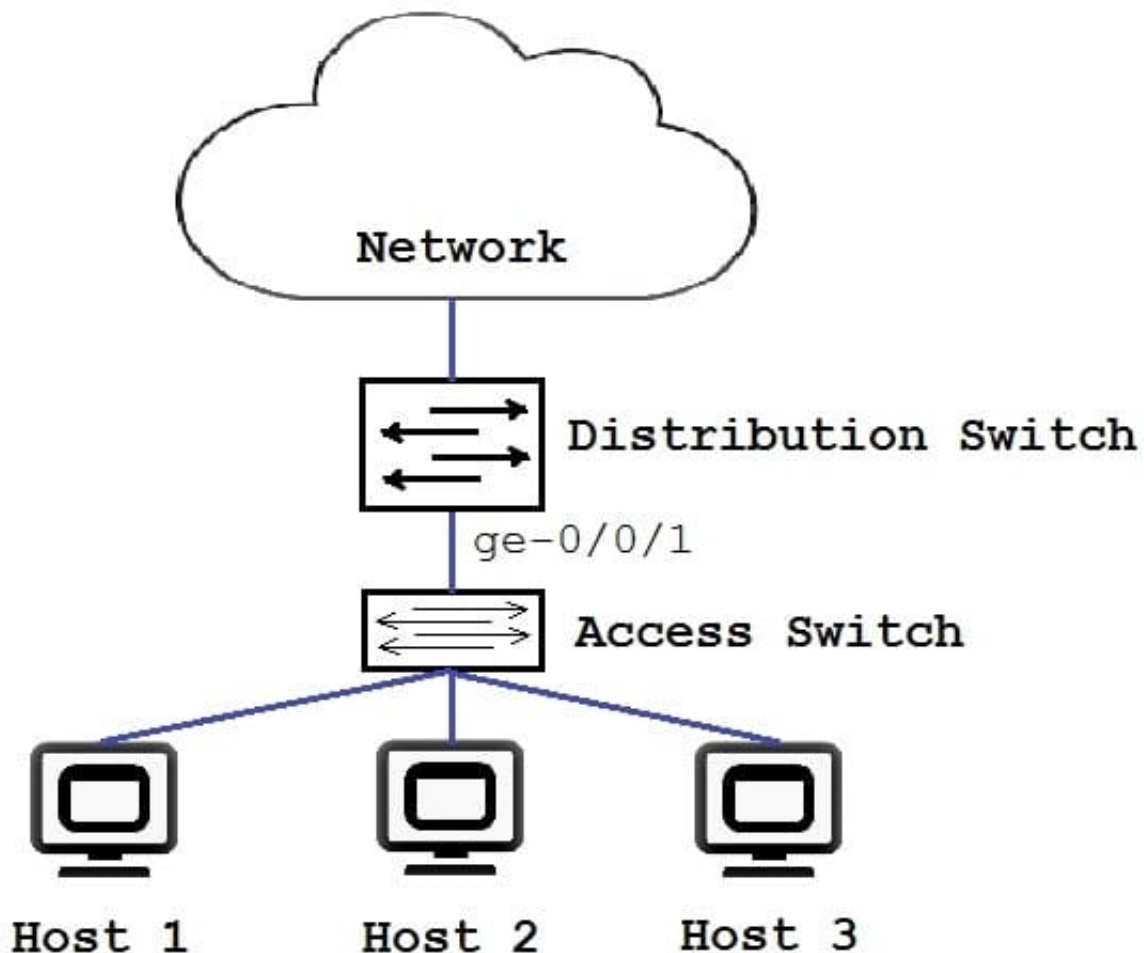
Following Questions and Answers are all new published by Juniper
Official Exam Center

- ⚙️ **Instant Download** After Purchase
- ⚙️ **100% Money Back** Guarantee
- ⚙️ **365 Days** Free Update
- ⚙️ **800,000+** Satisfied Customers



**QUESTION 1**

Click the Exhibit button.



```
{master: 0} [edit]
user@switch#show protocols dot1x
authenticator {
  interface {
    ge-0/0/1.0 {
      supplicant single;
    }
  }
}
```



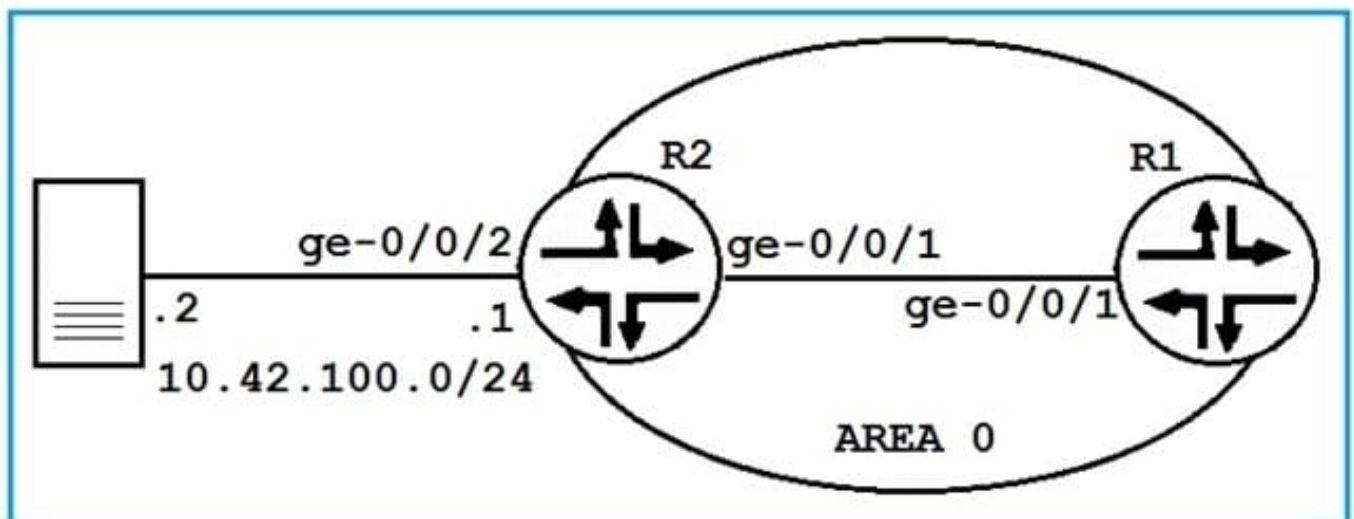
You have deployed the access control configuration to the distribution switch. Referring to the exhibit, which statement is true?

- A. All hosts connected to the access switch will have access to the work after one device authenticates.
- B. All hosts connected to the access switch require authentication to access the network.
- C. Only the first host to authenticate will have access to the network; other hosts will be blocked.
- D. All hosts connected to the access switch will have access to the network without authentication.

Correct Answer: C

QUESTION 2

Click the Exhibit button.



```
user@R1> show route 10.42.100.0
inet.0 : 61 destinations, 64 routes (61 active, 0 holddown, 0
hidden)
+ = Active Route, - = Last Active, * = Both

10.42.100.0/24    *[OSPF3/150] 00:00:11, metric 1, tag 0
                  > to 10.42.18.1 via ge-0/0/1.0
```

Referring to the exhibit, how is R1 learning the route from R2?

- A. R2 has interface ge-0/0/2 configured in another area under OSPFv3.
- B. R2 has an export policy with external type 1 configured.



- C. R2 has interface ge-0/0/2 configured as a passive interface under OSPFv3.
- D. R2 has an export policy with external type 2 configured.

Correct Answer: B

QUESTION 3

Click the Exhibit button.

```
[edit policy-options]
user@router# show
as-path regex "65100 . (65200|65300) +21870";
```

Which AS path matches the AS path regular expression shown in the exhibit?

- A. 65100 65200 21870 21870
- B. 65100 65101 65200 21870 21870
- C. 65100 21870 65200 65300
- D. 65100 65101 65200 65300 21870

Correct Answer: B

QUESTION 4

Which statement is correct about MSTP?

- A. MSTP enables mapping multiple independent spanning-tree instances onto one physical topology.
- B. MSTP enables dynamic discovery of Layer 2 neighbors.
- C. MSTP dynamically manages VLAN registration in a LAN.
- D. MSTP uses stacked VLAN tags to extend a Layer 2 Ethernet connection between multiple sites.

Correct Answer: A

QUESTION 5

Which two statements is true regarding the next hop attribute? (Choose two.)

- A. it is not changed when sent across EBGp sessions
- B. it is changed to self for IBGP routes learned from EBGp



C. it is not changed for IGBP routes learned from EGBP

D. it is Changed by default when sent across EGBP sessions

Correct Answer: CD

[JN0-647 PDF Dumps](#)

[JN0-647 Study Guide](#)

[JN0-647 Exam Questions](#)