



JN0-662^{Q&As}

Service Provider Routing and Switching - Professional (JNCIP-SP)

Pass Juniper JN0-662 Exam with 100% Guarantee

Free Download Real Questions & Answers **PDF** and **VCE** file from:

<https://www.geekcert.com/jn0-662.html>

100% Passing Guarantee
100% Money Back Assurance

Following Questions and Answers are all new published by Juniper
Official Exam Center

- ⚙️ **Instant Download** After Purchase
- ⚙️ **100% Money Back** Guarantee
- ⚙️ **365 Days** Free Update
- ⚙️ **800,000+** Satisfied Customers





QUESTION 1

Click the Exhibit button.

```
user@router> show route protocol bgp advertising-protocol bgp 172.17.10.49 10.16.0.20/30 extensive

inet.0: 64 destinations, 276 routes (63 active, 1 holddown, 0 hidden)
@ 10.16.0.20/30 (6 entries, 2 announced)
  BGP group ce type External
    Nexthop: Self
    AS path: [2856] 65200 ?

user@router> show protocols
  bgp {
    path-selection always-compare-med;
    log-updown;
    graceful-restart;
    group ce {
      type external;
      neighbor 172.17.10.49 {
        hold-time 180;
        cut-delay 0;
        damping;
        import L3vpn-standby;
        family inet {
          unicast {
            prefix-limit {
              maximum 200;
              teardown 80 idle-timeout forever;
            }
          }
        }
      }
    }
    authentication-key "CA0Ihrmf0I"; ## SECRET-DATA
    export L3vpn-ex;
    peer-as 65100;
    multipath;
  }
  multipath;
}
```

The route shown in the exhibit is being advertised to the EBGp peer and displays a next hop of itself. However, you do not have a next-hop self policy configured. What would cause this behavior?

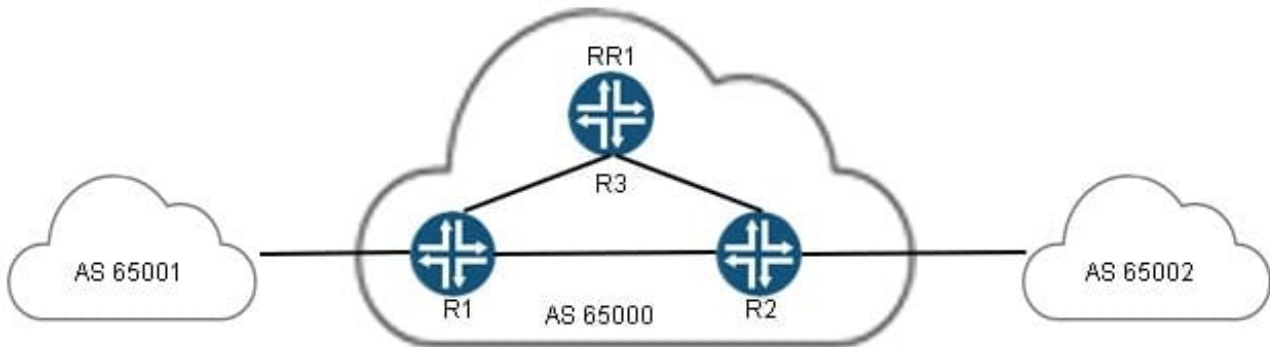
- A. The IBGP peers have a next-hop self policy, which the router is exporting to the EBGp neighbors.
- B. The set protocols bgp path-selection as-path-ignore is not set and must be added so the next-hop attribute will propagate from the peer.
- C. The set protocols bgp accept-remote-next hop is not set and must be added so the next- hop attribute will propagate from the peer.
- D. The next-hop attribute was modified by default when it was advertised to the EBGp peer, without applying a policy.

Correct Answer: D

QUESTION 2



Click the Exhibit button.



```
user@router# show protocols bgp
group route-reflector {
    type internal;
    local-address 10.1.1.1;
    export nhs;
    cluster 10.1.1.1;
    neighbor 10.1.1.2;
    neighbor 10.1.1.3;
}
user@router# show policy-options policy-statement nhs
term 1 {
    then {
        next-hop self;
    }
}
```

You administer AS 65000, and have deployed a route reflector (RR1) in your network as shown in the exhibit. The traffic between AS 65001 and AS 65002 is going through the route reflector, even though it is not the best path.

What will solve this problem?

- A. Change the LOCAL_PREF so that it uses the preferred path.
- B. Remove the nhs policy.
- C. Change the originator to be the preferred path.
- D. Change the IGP metric so it is lower on the preferred path.

Correct Answer: B

QUESTION 3

Which two types of LSAs have a domain scope? (Choose two.)

- A. Type 7
- B. Type 2



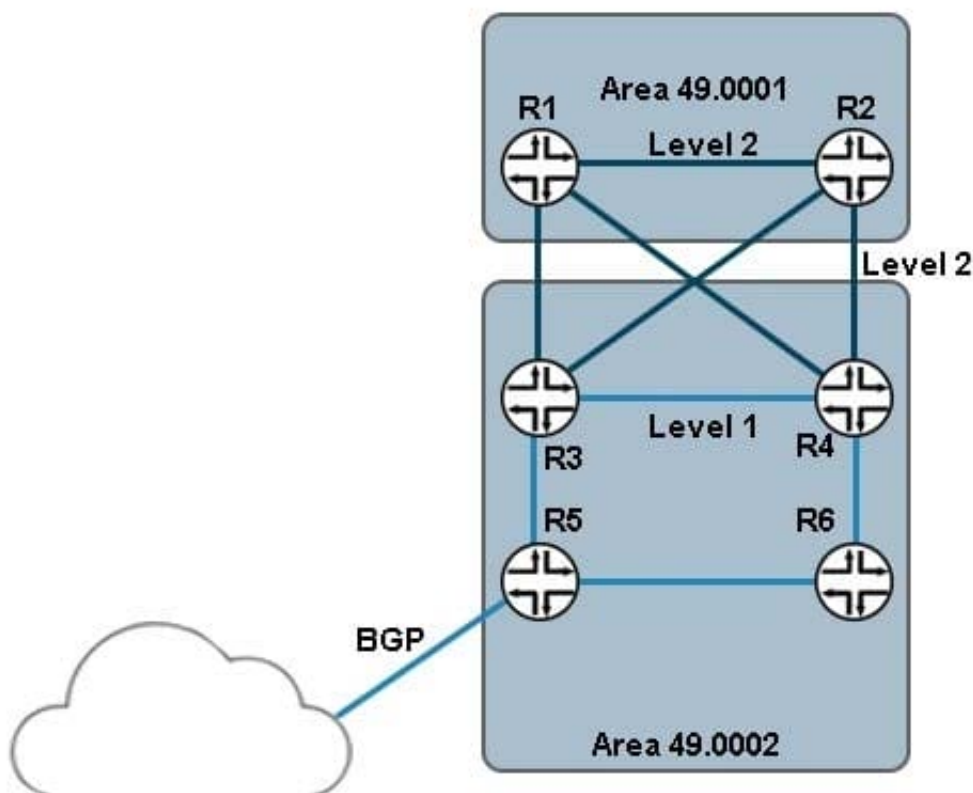
C. Type 10

D. Type 5

Correct Answer: CD

QUESTION 4

Click the Exhibit button.



BGP routes received on R5 are redistributed into the IS-IS network. You want the redistributed routes to be present in Area 49.0001.

Referring to the exhibit, how would this task be accomplished?

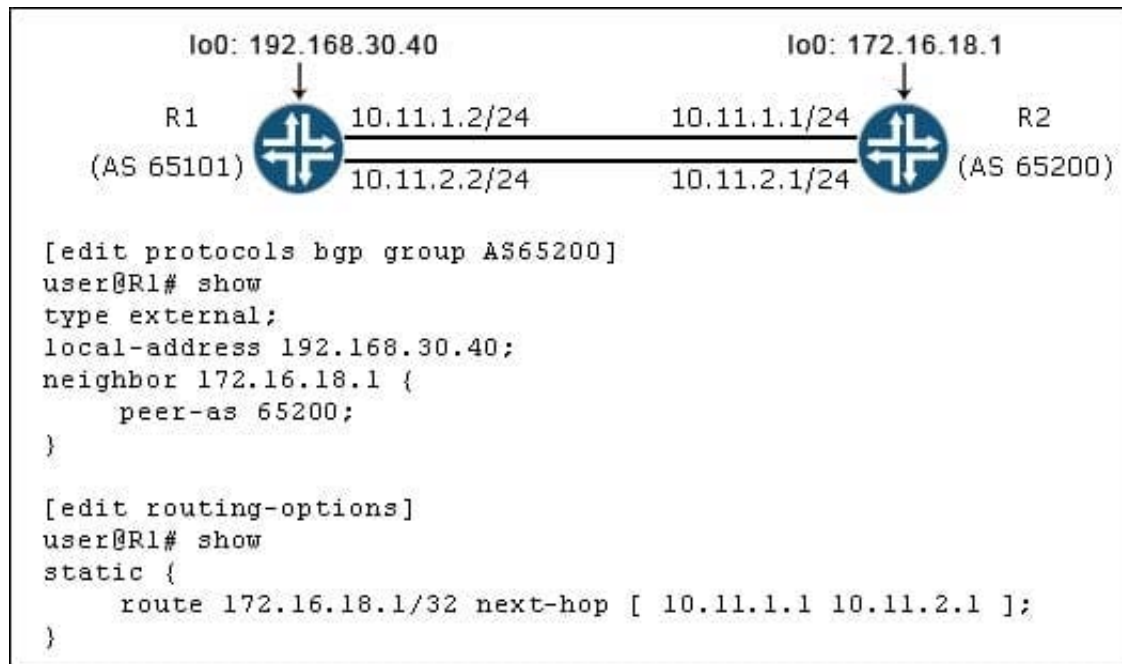
- A. Configure the set protocols isis ignore-attached-bit parameter on router R5.
- B. Configure the set protocols isis ignore-attached-bit parameter on routers R3 and R4.
- C. Configure the set protocols isis level 2 wide-metrics-only parameter on routers R3 and R4.
- D. Configure the set protocols isis level 1 wide-metrics-only parameter on router R5.

Correct Answer: D



QUESTION 5

Click the Exhibit button.



Referring to the exhibit, what must be added to the existing configuration to ensure that per-prefix load balancing occurs?

- A. multihop
- B. keep all
- C. multipath
- D. family inet unicast

Correct Answer: A

[Latest JN0-662 Dumps](#)

[JN0-662 Practice Test](#)

[JN0-662 Study Guide](#)