



JN0-662^{Q&As}

Service Provider Routing and Switching - Professional (JNCIP-SP)

Pass Juniper JN0-662 Exam with 100% Guarantee

Free Download Real Questions & Answers **PDF** and **VCE** file from:

<https://www.geekcert.com/jn0-662.html>

100% Passing Guarantee
100% Money Back Assurance

Following Questions and Answers are all new published by Juniper
Official Exam Center

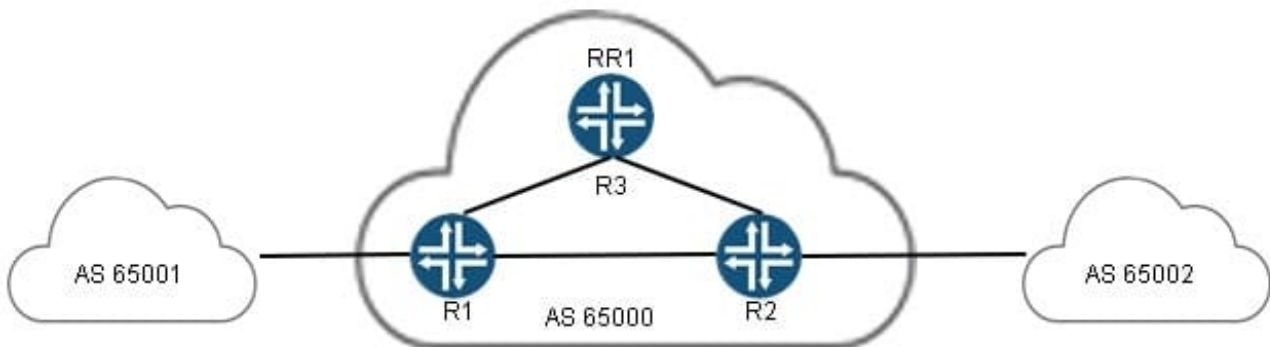
- ⚙️ **Instant Download** After Purchase
- ⚙️ **100% Money Back** Guarantee
- ⚙️ **365 Days** Free Update
- ⚙️ **800,000+** Satisfied Customers





QUESTION 1

Click the Exhibit button.



```
user@router# show protocols bgp
group route-reflector {
  type internal;
  local-address 10.1.1.1;
  export nhs;
  cluster 10.1.1.1;
  neighbor 10.1.1.2;
  neighbor 10.1.1.3;
}
user@router# show policy-options policy-statement nhs
term 1 {
  then {
    next-hop self;
  }
}
```

You administer AS 65000, and have deployed a route reflector (RR1) in your network as shown in the exhibit. The traffic between AS 65001 and AS 65002 is going through the route reflector, even though it is not the best path.

What will solve this problem?

- A. Change the LOCAL_PREF so that it uses the preferred path.
- B. Remove the nhs policy.
- C. Change the originator to be the preferred path.
- D. Change the IGP metric so it is lower on the preferred path.

Correct Answer: B

QUESTION 2

You are asked to configure PIM-SM in your network. Your implementation must allow for load sharing between redundant RPs and, should an RP failure occur, the RP failover time should be minimized.



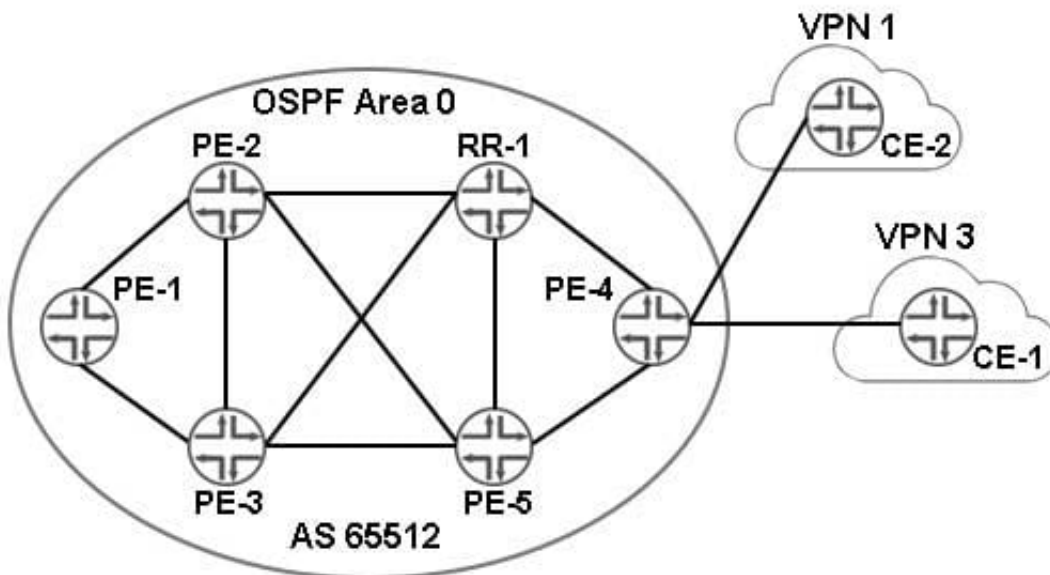
Which two configuration tasks are required in this scenario? (Choose two.)

- A. Configure MSDP peering sessions between the routers designated as RPs.
- B. Configure the shared anycast address on the RPs as the primary address on the loopback interface.
- C. On the routers designated as RPs, configure the shared anycast address on the loopback interface.
- D. Configure at least two static RPs and bundle them in an RP redundancy group under [edit protocols pim].

Correct Answer: BD

QUESTION 3

Click the Exhibit button.



Referring to the exhibit, you have multiple Layer 3 VPNs established in your network. You are asked to ensure that PE-4 allows CE-2 in VPN 1 to communicate with CE-1 in VPN 3.

Which two statements are correct in this scenario? (Choose two.)

- A. Use a BGP export policy to share the appropriate VRF routes.
- B. Use the auto-export feature to share the appropriate VRF routes.
- C. Use a BGP import policy to share the appropriate VRF routes.
- D. Use rib-groups to share the appropriate VRF routes.

Correct Answer: AC

QUESTION 4



How does Juniper Networks use selective BGP route damping to help stabilize the network?

- A. The damping decay half-life holds down peer links for a defined measure of time to prevent route table reconvergence.
- B. The damping max-suppress timer is set to the lowest possible value by default.
- C. The figure-of-merit value measures route stability by advertisement and withdrawal.
- D. Aggressive IGP hold timers prevent the routes from entering and exiting the BGP route selection process.

Correct Answer: C

QUESTION 5

Which message type initiates the BGP session?

- A. update
- B. open
- C. keepalive
- D. notification

Correct Answer: B

[Latest JN0-662 Dumps](#)

[JN0-662 PDF Dumps](#)

[JN0-662 Practice Test](#)