



JN0-663^{Q&As}

Service Provider Routing and Switching, Professional (JNCIP-SP)

Pass Juniper JN0-663 Exam with 100% Guarantee

Free Download Real Questions & Answers **PDF** and **VCE** file from:

<https://www.geekcert.com/jn0-663.html>

100% Passing Guarantee
100% Money Back Assurance

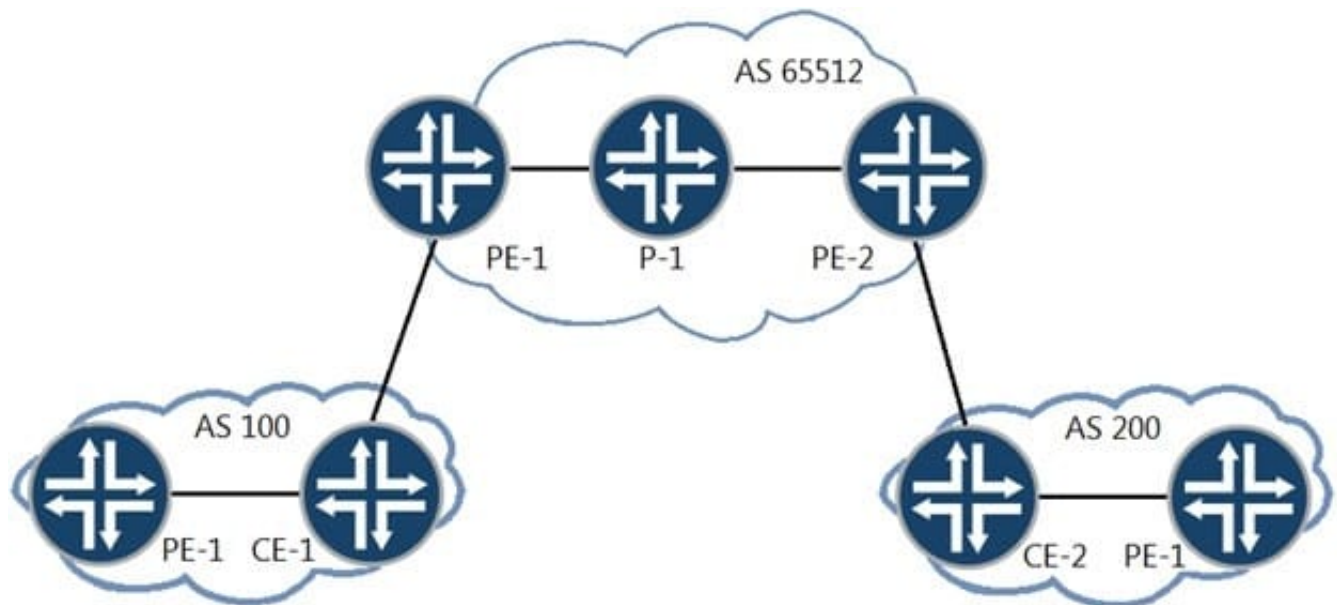
Following Questions and Answers are all new published by Juniper
Official Exam Center

- ⚙ **Instant Download** After Purchase
- ⚙ **100% Money Back** Guarantee
- ⚙ **365 Days** Free Update
- ⚙ **800,000+** Satisfied Customers





QUESTION 1



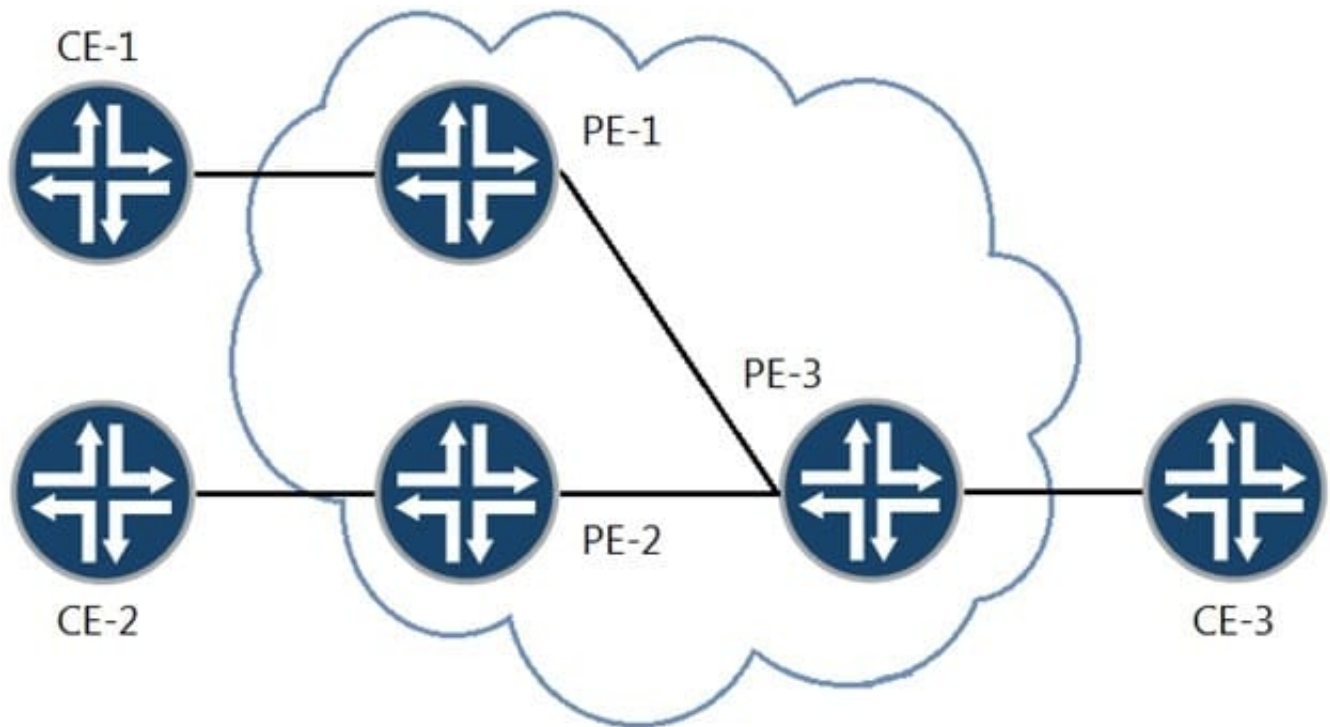
You are providing carrier-of-carrier VPN services for AS 100 and AS 200. You want to distribute MPLS labels between your PE routers and the AS 100 and AS 200 CE routers.

What must be enabled to accomplish this task?

- A. Use BGP with the inet-vpn address family enabled.
- B. Use BGP with the labeled-unicast address family enabled.
- C. Use RSVP with the lsp-set parameter enabled.
- D. Use RSVP with the tunnel-services parameter enabled.

Correct Answer: A

QUESTION 2



CE-1, CE-2, and CE-3 are part of a single VPLS VPN. An Ethernet frame has just arrived at PE-3 from CE

3. It has a source MAC address of CE-3 and a destination MAC address of CE-1. You want to know what PE-3 does with the Ethernet frame.

Referring to the exhibit, which statement is correct?

- A. It drops the packet because the destination MAC address is not in PE-3's MAC table.
- B. It forwards the packet to PE-1 and PE-2.
- C. It forwards the packet to PE-1 only.
- D. It drops the packet because the destination MAC address is not for PE-3.

Correct Answer: B

QUESTION 3



```
user@R2# show protocols isis
level 1 disable;
interface ge-0/0/0.0;
interface ge-0/0/1.0 {
    level 2 metric 300;
}
```



```
user@R1# show protocols isis
level 1 disable;
interface ge-0/0/0.0;
```

```
user@R3# show protocols isis
level 1 disable;
interface ge-0/0/1.0;
```

AREA 49.0001

Referring to the exhibit, what will the IS-IS cost be for R1 to reach R3?

- A. 73
- B. 20
- C. 301
- D. 310

Correct Answer: D

QUESTION 4

You are establishing a Layer 3 VPN between two PE devices. Currently you have a single internal IPv4 BGP peering between the PE devices. You must ensure that the IPv4 and IPv6 routes from both CE devices are exchanged between these sites.

Which two statements are correct in this scenario? (Choose two.)

- A. You must enable IPv6 tunneling on the LSPs between the PE devices.
- B. You must establish an IPv6 BGP peering between the two PEs.
- C. You must enable the inet6-vpn NLRI on both PE devices.
- D. You must enable the inet-vpn NLRI on both PE devices.

Correct Answer: CD

**QUESTION 5**

```
user@host> show pim join 234.100.0.1 extensive
Instance: PIM.master Family: INET
R = Rendezvous Point Tree, S = Sparse, W = Wildcard

Group: 234.100.0.1
  Source: 192.168.100.2
  Flags: sparse, spt
  Active upstream interface: ge-1/0/0.0
  Active upstream neighbor: 192.168.101.2
  MoFRR Backup upstream interface: ge-1/0/1.0
  MoFRR Backup upstream neighbor: 192.168.102.2
  Upstream state: Join to Source, No Prune to RP
  Keepalive timeout: 300
  Uptime: 00:00:15
  Downstream neighbors:
    Interface: ge-1/2/0.0
      192.168.103.2 State: Join Flags: S Timeout: Infinity
      Uptime: 00:00:15 Time since last Join: 00:00:15
  Number of downstream interfaces: 1
```

Which three statements are true about the show pim join output shown in the exhibit? (Choose three.)

- A. This is a source-specific multicast stream.
- B. The multicast receiver is still using the RP to receive the stream.
- C. The multicast stream has been configured with a backup path to allow for fast reroute.
- D. The multicast stream does not have an RP.
- E. The shortest path to the source is through the RP.

Correct Answer: CDE

[JN0-663 Practice Test](#)

[JN0-663 Study Guide](#)

[JN0-663 Braindumps](#)