



JPR-961^{Q&As}

Juniper Networks Certified Internet Expert (JNCIE-SP)

Pass Juniper JPR-961 Exam with 100% Guarantee

Free Download Real Questions & Answers **PDF** and **VCE** file from:

<https://www.geekcert.com/jpr-961.html>

100% Passing Guarantee
100% Money Back Assurance

Following Questions and Answers are all new published by Juniper
Official Exam Center

- ⚙️ **Instant Download** After Purchase
- ⚙️ **100% Money Back** Guarantee
- ⚙️ **365 Days** Free Update
- ⚙️ **800,000+** Satisfied Customers





QUESTION 1

You are an Enterprise administrator for ABC.com. All servers on the corporate network run Windows Server and all client computers run Windows XP.

The network contains a server named ABC-SR01 that has Routing and Remote Access service and a modem installed which connects to an external phone line.

A partner company uses a dial-up connection to connect to ABC-SR01 to upload product and inventory information. This connection happens between the hours of 1:00am and 2:00am every morning and uses a domain user account to log on

to ABC-SR01.

You have been asked by the security officer to secure the connection.

How can you ensure that the dial-up connection is initiated only from the partner company and that access is restricted to just ABC-SR01? (Choose three.)

- A. Set up the log on hours restriction for the domain user account to restrict the log on to between the hours of 1:00am and 2:00am.
- B. Set up a local user account on ABC-SR01. Have the dial-up connection configured to log on with this account.
- C. Set up the remote access policy on ABC-SR01 to allow the connection for the specified user account between the hours of 1:00am and 2:00am.
- D. Set up the remote access policy with the Verify Caller ID option to only allow calling from the phone number of the partner company modem.
- E. Set up the remote access policy to allow access to the domain user account only.

Correct Answer: BCD

QUESTION 2

You work as the network administrator at ABC.com. The ABC.com network consists of a single Active Directory domain named ABC.com. The servers at the ABC.com network run Windows Server and the workstations, Windows XP

Professional.

The ABC.com network has a DNS server named ABC-SR03 that does name resolution for host on the Internet. ABC.com users complain that they do not get the correct site when trying to access Web site known to them.

What actions must you take to stop this from happening without disrupting production?

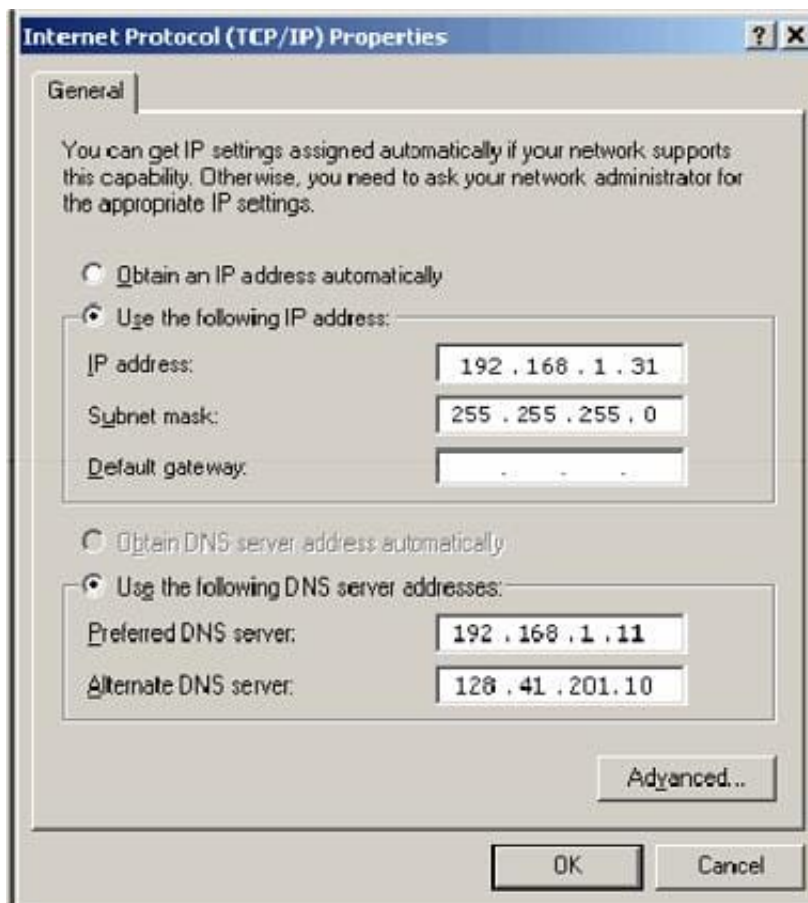
- A. You should restart the DNS Server service.
- B. You should select the Secure cache against pollution setting.
- C. You should run the ipconfig/flushdns on ABC-SR03.
- D. You should run the ipconfig/registerdns on ABC-SR03.



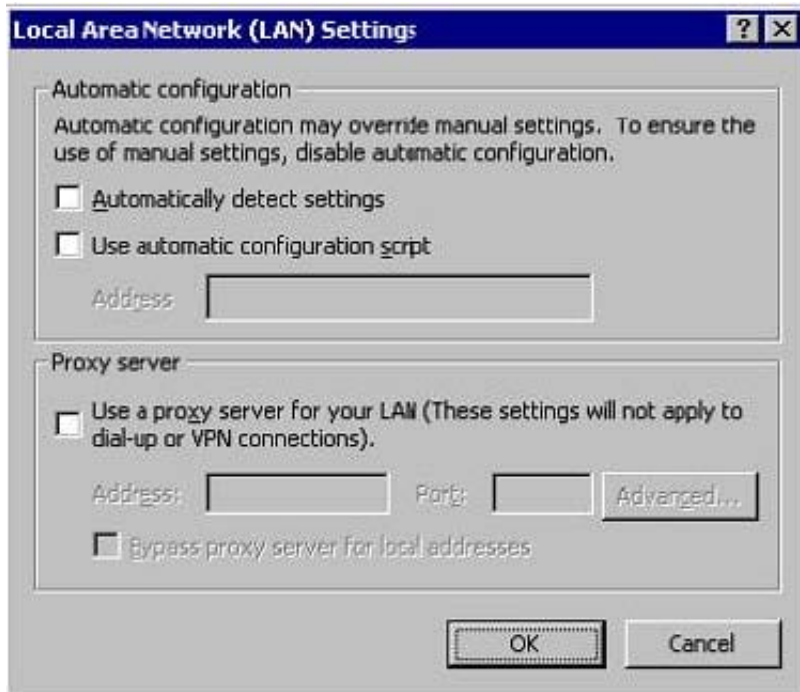
Correct Answer: B

QUESTION 3

Mark works as a Network Administrator for ABC.com. The company has a Windows domainbased network. The network has six Windows member servers and 120 Windows XP Professional client computers. All the member servers are using static IP configuration. Five of the member servers work as Intranet Web servers, and one of them named ISERV works as a Routing and Remote Access server. The NAT/Basic routing protocol is enabled to route traffic between the local network and the Internet. ISERV\\'s internal IP address is 192.168.1.1. The Web servers\\' static IP configuration is shown in the image below:



The Web servers require Internet access to display Web pages from the Internet. The Web servers are configured with the Internet Explorer LAN settings as shown in the image below:



The users on the intranet report that only the local Web pages stored on the Web servers are displayed. Mark attempts to view the Web pages on the Internet from one of the Web servers, but he is unable to do so. Mark wants all the Web servers to be able to access the Web pages on the Internet. What will he do to accomplish this?

- A. On the TCP/IP Properties page on the Web servers, configure the default gateway as 192.168.1.1.
- B. Configure the Web servers to receive IP addresses from the DHCP server.
- C. In the LAN settings dialog box on all the Web servers, configure port 80.
- D. On the TCP/IP Properties page on the Web servers, configure the default gateway as 255.255.255.0.

Correct Answer: A

QUESTION 4

Andrew works as a Network Administrator for ABC.com. The company has a Windows domain-based network. The company has two Windows servers and 150 Windows Professional client computers.

The company has a Windows server named NATSERV that has a dial-up connection to the Internet.

NATSERV has two network interfaces named EthernetA and EthernetB .

EthernetA is connected to the LAN and has an IP address of 192.168.1.121. EthernetB is connected to the Internet and has an IP address of 132.103.102.71. The client computers on the LAN connect to the Internet by using NATSERV. NAT

also has Routing and Remote Access installed.

Andrew enables the NAT/Basic Firewall routing protocol on NATSERV. The configuration of the NAT/Basic Firewall routing on NATSERV is shown in the image below:



EthernetA Properties ? X

NAT/Basic Firewall | Address Pool | Services and Ports | ICMP

Interface Type:

☐ Private interface connected to private network

☒ Public interface connected to the Internet

☒ Enable NAT on this interface
NAT enables clients on this network to send data to and receive data from the Internet using this interface.

☐ Enable a basic firewall on this interface
A basic firewall accepts data from the Internet only if it has been requested by the network.

☐ Basic firewall only

Static packet filters
Static packet filters can restrict traffic based on packet attributes, such as IP address or protocol.

Inbound Filters Outbound Filters

OK Cancel Apply

EthernetB Properties ? X

NAT/Basic Firewall

Interface Type:

☒ Private interface connected to private network

☐ Public interface connected to the Internet

☐ Enable NAT on this interface
NAT enables clients on this network to send data to and receive data from the Internet using this interface.

☐ Enable a basic firewall on this interface
A basic firewall accepts data from the Internet only if it has been requested by the network.

☐ Basic firewall only

Static packet filters
Static packet filters can restrict traffic based on packet attributes, such as IP address or protocol.

Inbound Filters Outbound Filters

OK Cancel Apply



The client computers on the network are unable to connect to the Internet. When Andrew tries to ping 132.103.102.71 from the client computers on the local network, he receives a message as shown in the image below:

```
C:\WINNTADV\system32\cmd.exe

C:\>ping 132.103.102.71

Pinging 132.103.102.71 with 32 bytes of data:

Request timed out.
Request timed out.
Request timed out.
Request timed out.

Ping statistics for 132.103.102.71:
    Packets: Sent = 4, Received = 0, Lost = 4 (100% loss),
    Approximate round trip times in milli-seconds:
        Minimum = 0ms, Maximum = 0ms, Average = 0ms

C:\>_
```

Andrew wants to ensure that the client computers on the local network are able to connect to the Internet.

What will he do to accomplish this?

Each correct answer represents a part of the solution. (Choose two.)

- A. For EthernetB, configure Outbound Filters under Static packet filters.
- B. For EthernetA, configure Inbound Filters under Static packet filters.
- C. For EthernetA, configure NAT/Basic Firewall as '\\Private interface connected to private network\\'.
- D. For EthernetB, configure NAT/Basic Firewall as '\\Public interface connected to the Internet\\'.

Correct Answer: CD

QUESTION 5

The ABC.com network consists of a single Active Directory domain named ABC.com. All the servers on the network run Windows Server servers and all the client computers run Windows XP.

The network contains a two node server cluster for file sharing that has been created using two Windows Server Enterprise Edition servers named ABC-SR01 and ABC-SR02. Both servers contain a single hard disk containing the system

volume. Both servers connect to a shared storage array which hosts the shared folders.

ABC-SR01 is configured as the preferred owner of the file sharing resources. To prepare your network for any disaster recovery, you decide to take regular backups using the Backup or Restore Wizard.

A Full backup of the shared folders is taken every night.

A Full backup of ABC-SR01 and ABC-SR02 is taken every Saturday night.



Incremental backups of ABC-SR01 and ABC-SR02 are taken every night. System State Data backups and Automated System Recovery (ASR) of both servers are taken every night.

During a routine monitoring check on Friday you discover that ABC-SR02 has gone offline.

How can you recover the cluster as soon as possible? (Choose all that apply.)

- A. Evict ABC-SR02 from the cluster.
- B. Restore the last full backup then restore the last incremental backup.
- C. Restore the last full backup then restore the last incremental backup and the last System State backup.
- D. Perform an ASR restore on ABC-SR02.
- E. Add ABC-SR02 back into the cluster.

Correct Answer: ADE

[JPR-961 VCE Dumps](#)

[JPR-961 Study Guide](#)

[JPR-961 Exam Questions](#)