



JPR-961^{Q&As}

Juniper Networks Certified Internet Expert (JNCIE-SP)

Pass Juniper JPR-961 Exam with 100% Guarantee

Free Download Real Questions & Answers **PDF** and **VCE** file from:

<https://www.geekcert.com/jpr-961.html>

100% Passing Guarantee
100% Money Back Assurance

Following Questions and Answers are all new published by Juniper
Official Exam Center

-  **Instant Download** After Purchase
-  **100% Money Back** Guarantee
-  **365 Days** Free Update
-  **800,000+** Satisfied Customers





QUESTION 1

The president of your company has asked you if VPN technology could benefit the company. What is the greatest benefit provided by VPN?

- A. VPN solutions provide secure connectivity at a significant price savings compared to long distance analog or dedicated circuit connections.
- B. VPN solutions utilize fewer resources than dedicated circuits or analog connections.
- C. VPN solutions provide better remote control capabilities than other third-party alternatives.
- D. VPN solutions provide higher speed connections than dedicated circuits or analog connections.

Correct Answer: A

QUESTION 2

You are working as the administrator at ABC.com. Part of your job description includes the deployment of applications on the ABC.com network. To this end you operate by testing new application deployment in a test environment prior to deployment on the production network.

The new application that should be tested requires 2 processors and 3 GB of RAM to run successfully. Further requirements of this application also include shared folders and installation of software on client computers. You install the application on a Windows Server Web Edition computer and install the application on 30 test client computers.

During routine monitoring you discover that only a small amount of client computers are able to connect and run the application. You decide to turn off the computers that are able to make a connection and discover that the computers that failed to open the application can now run the application.

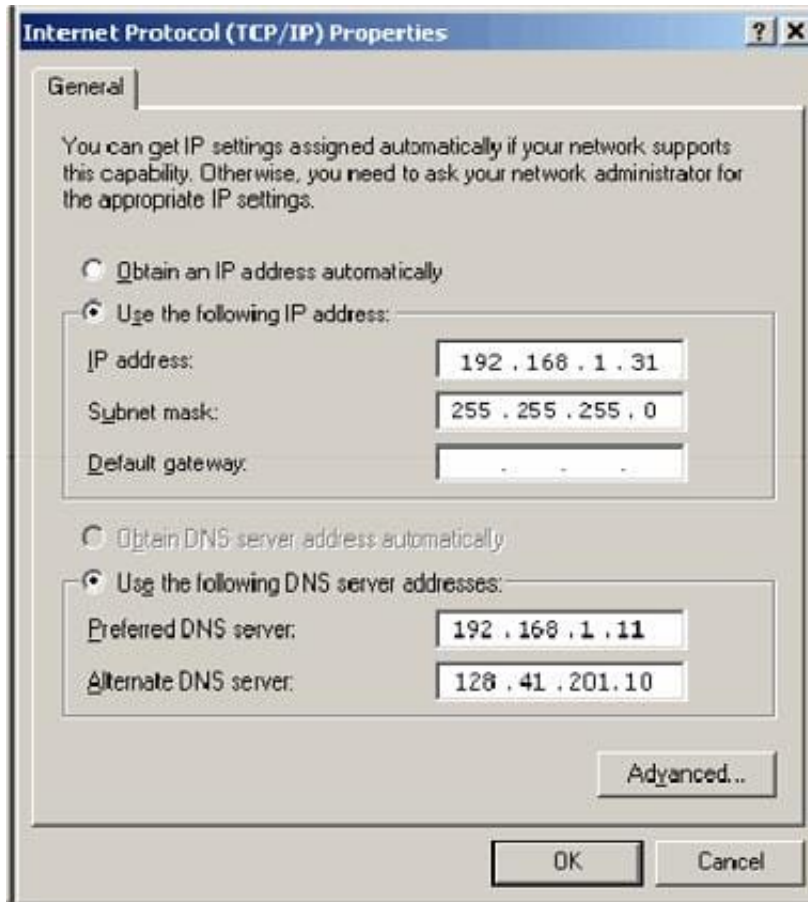
How would you ensure that all client computers can connect to the server and run the application?

- A. By running a second instance of the application on the server.
- B. By increasing the Request Queue Limit on the Default Application Pool.
- C. By modifying the test server operating system to Windows Server Standard Edition.
- D. By increasing the amount of RAM in the server to 4GB.

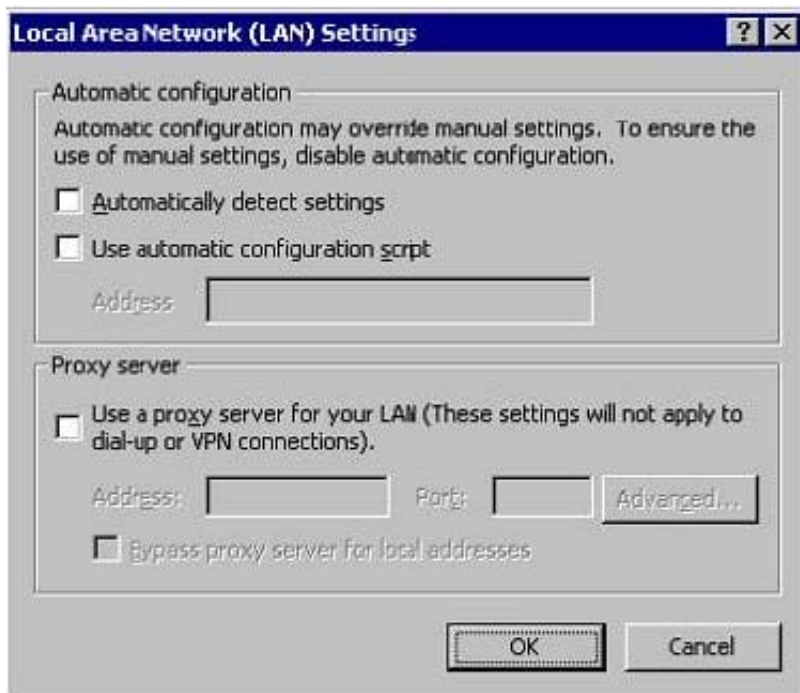
Correct Answer: C

QUESTION 3

Mark works as a Network Administrator for ABC.com. The company has a Windows domain-based network. The network has six Windows member servers and 120 Windows XP Professional client computers. All the member servers are using static IP configuration. Five of the member servers work as Intranet Web servers, and one of them named ISERV works as a Routing and Remote Access server. The NAT/Basic routing protocol is enabled to route traffic between the local network and the Internet. ISERV's internal IP address is 192.168.1.1. The Web servers' static IP configuration is shown in the image below:



The Web servers require Internet access to display Web pages from the Internet. The Web servers are configured with the Internet Explorer LAN settings as shown in the image below:



The users on the intranet report that only the local Web pages stored on the Web servers are displayed. Mark attempts to view the Web pages on the Internet from one of the Web servers, but he is unable to do so. Mark wants all the Web



servers to be able to access the Web pages on the Internet. What will he do to accomplish this?

- A. On the TCP/IP Properties page on the Web servers, configure the default gateway as 192.168.1.1.
- B. Configure the Web servers to receive IP addresses from the DHCP server.
- C. In the LAN settings dialog box on all the Web servers, configure port 80.
- D. On the TCP/IP Properties page on the Web servers, configure the default gateway as 255.255.255.0.

Correct Answer: A

QUESTION 4

You work as a Network Administrator for ABC.com. The company has a Windows domainbased network. In order to automate the TCP/IP configuration for the client computers in the network, you install the DHCP Server service on a Windows member server. You want to ensure that all the network printers always use the same IP address. In order to accomplish this, you create IP address reservations for the network printers while creating the DHCP scope. You also define an exclusion range for the printers. Now, none of the printers are receiving the IP addresses. However, the client computers are not experiencing this problem. What will you do to resolve the issue?

- A. Remove the exclusion range for the addresses that are being used by the printers.
- B. Assign the IP addresses to the printers manually.
- C. Run the IPCONFIG /release command-line utility on the printers.
- D. Remove the client reservations for the addresses that are being used by the printers.

Correct Answer: A

QUESTION 5

You administer a Windows Server Active Directory domain for your company. The domain is divided into two subnets. Subnet A uses the network address 192.168.12.0/24, and Subnet B uses the network address 192.168.14.0/24. All domain

controllers and member servers are Windows Server computers, and all clients are Windows 2000 Professional computers.

Clients in Subnet A obtain TCP/IP settings from a DHCP server named DHCPA, which resides in Subnet A. Clients in Subnet B cannot obtain DHCP settings at all, even though you configured a scope for Subnet B on DHCPA. Your need to

enable clients on SubnetB to automatically obtain TCP/IP settings from DHCPA.

What should you install on Subnet B?

- A. a primary DNS server
- B. an SUS server
- C. a DHCP relay agent



D. a master DNS server

E. an SMTP server

Correct Answer: C

[Latest JPR-961 Dumps](#)

[JPR-961 Study Guide](#)

[JPR-961 Braindumps](#)