



MB-400^{Q&As}

Microsoft Power Apps + Dynamics 365 Developer

Pass Microsoft MB-400 Exam with 100% Guarantee

Free Download Real Questions & Answers **PDF** and **VCE** file from:

<https://www.geekcert.com/mb-400.html>

100% Passing Guarantee
100% Money Back Assurance

Following Questions and Answers are all new published by Microsoft
Official Exam Center

-  **Instant Download** After Purchase
-  **100% Money Back** Guarantee
-  **365 Days** Free Update
-  **800,000+** Satisfied Customers





QUESTION 1

An organization implements Dynamics 365 Customer Engagement.

You need to create a Microsoft Flow that runs daily.

What are two possible ways to achieve this goal? Each correct answer presents a complete solution.

NOTE: Each correct selection is worth one point.

- A. Create the flow and set the flow frequency to daily and the interval to 1.
- B. Create the flow and set the flow frequency to hourly and the value to 1.
- C. Create the flow and set the flow frequency to hourly and the value to 24.
- D. Create the flow and set the flow frequency to daily and the interval to 24.

Correct Answer: AD

QUESTION 2

HOTSPOT

You need to select the visualization component.

What should you use? To answer, select the appropriate options in the answer area.

NOTE: Each correct selection is worth one point.

Hot Area:



Requirement	Component
Mailing list opt-in/opt-out	<ul style="list-style-type: none">Flip switchLinear gaugeRadial knobLinear slider
Number of store visits	<ul style="list-style-type: none">Linear gaugeFlip switchPen controlInput mask
Purpose of visit	<ul style="list-style-type: none">Linear gaugeFlip switchRadial knobOption set

Correct Answer:



Requirement	Component
Mailing list opt-in/opt-out	<ul style="list-style-type: none">Flip switchLinear gaugeRadial knobLinear slider
Number of store visits	<ul style="list-style-type: none">Linear gaugeFlip switchPen controlInput mask
Purpose of visit	<ul style="list-style-type: none">Linear gaugeFlip switchRadial knobOption set

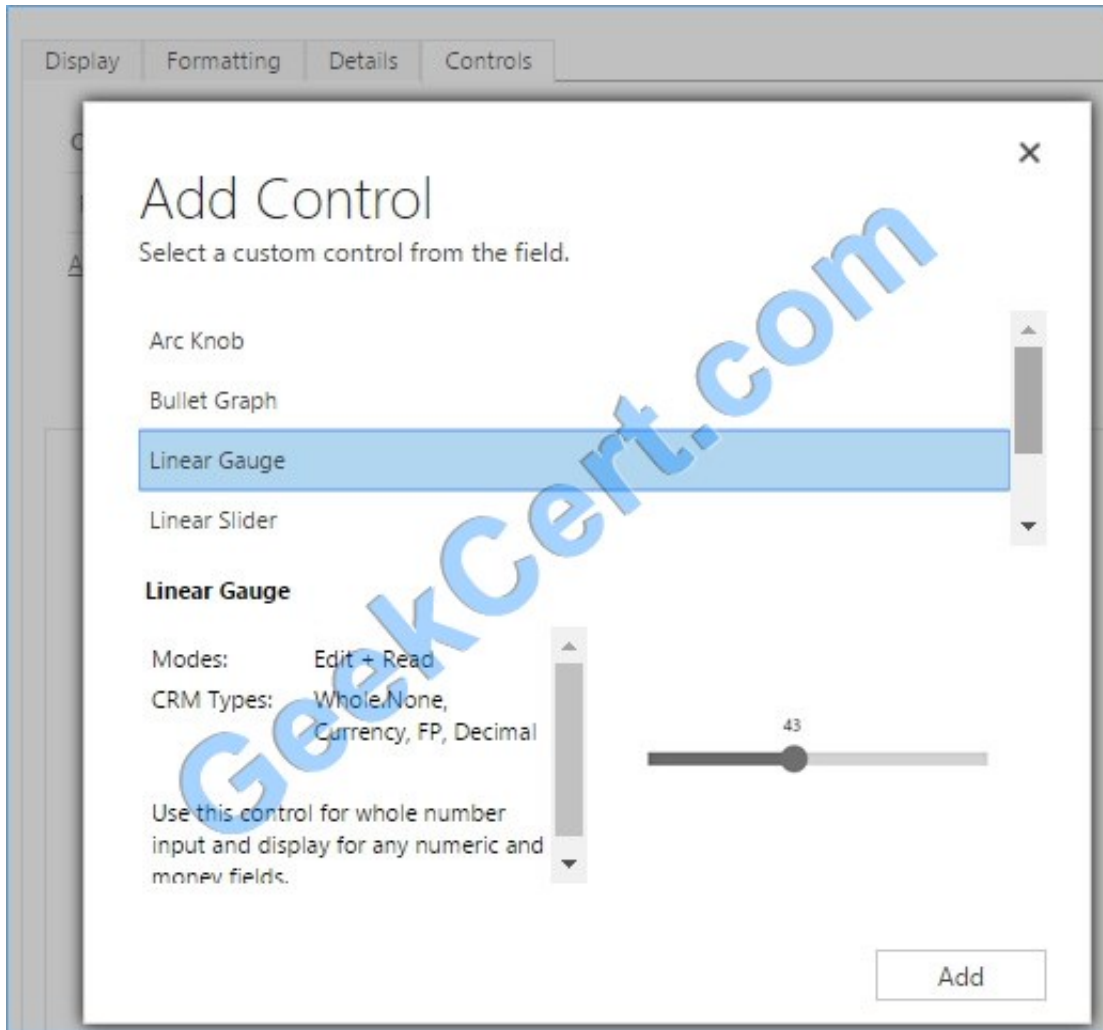
Box 1: Flip switch

The Field Type to use Flip Switch would be 'Two options'.

If you go by UI perspective, Flip switch control- Yes/No (Boolean) options would give the nice field look in the web, mobile app and Tablet. Instead of using check boxes and radio buttons, this control adds a visual effect like the On/Off switch

way.

Box 2: Linear gauge



Box 3: Option Set

Option sets are the ideal choice for offering users a list of defined options for a field selection.

Reference:

<https://www.inogic.com/blog/2018/04/controls-in-dynamics-365-for-mobile-app-flip-switch/>

<https://community.dynamics.com/365/sales/b/crminogic/posts/new-controls-for-phones-and-tablets-in-dynamics-crm-2016-update-1>

QUESTION 3

DRAG DROP

A company creates a custom connector to use in a flow named Search Company.

When this custom connector is used, requests must be redirected to a different endpoint at runtime.

You need to apply a policy to the custom connector to route calls to a different endpoint.

Which three actions should you perform in sequence? To answer, move the appropriate actions from the list of actions



to the answer area and arrange them in the correct order.

Select and Place:

Actions	Answer Area
Select the Search Company custom connector in the Microsoft Flow portal under Custom connectors and select edit .	
Select the Definition tab.	
Select the Security tab.	
Select New Action.	
Select References.	
Select New Policy.	
Select the Search Company custom connector in the Microsoft Flow portal under Connections and select edit .	

Correct Answer:

Actions	Answer Area
	Select the Search Company custom connector in the Microsoft Flow portal under Custom connectors and select edit .
	Select the Definition tab.
Select the Security tab.	Select New Policy.
Select New Action.	
Select References.	
Select the Search Company custom connector in the Microsoft Flow portal under Connections and select edit .	

Step 1: Select the Search Company custom connector in the Microsoft Flow portal under Custom connectors and select edit.

Login to the Microsoft Flow portal, and on right top corner click on the settings icon and then click on custom connectors option.

Step 2: Select the Definition tab

Policy template are available only for custom connectors. To use a policy template, open Power Automate portal and either create a new custom connector or edit an existing one.



1.

In the custom connector wizard, select the Definition page.

2.

From the Definition page, select New Policy.

3.

Etc.

Step 3: Select New Policy

Reference:

<https://docs.microsoft.com/en-us/connectors/custom-connectors/policy-templates>

QUESTION 4

A company has two development instances, two test instances, two staging instances, and one production instance.

The test team reports connection issues with the test and staging instances.

You need to identify which if the instances the testing team currently has access.

Which two URLs can you use? Each correct answer presents a complete solution.

NOTE: Each correct selection is worth one point.

A. <https://myorg.api.crm.dynamics.com/api/data/v.9.1/>

B. <https://dev.crm.dynamics.com/api/discovery/v9.1/Instances>

C. [https://dev.crm.dynamics.com/api/discovery/v9.1/Instances\(UniqueName=\\'myorg\\'\)](https://dev.crm.dynamics.com/api/discovery/v9.1/Instances(UniqueName=\\'myorg\\'))

D. <https://disco.crm.dynamics.com/api/discovery/v9.1/>

E. <https://globaldisco.crm.dynamics.com/api/discovery/v9.1/Instances>

Correct Answer: CE

C: Organization information is stored in the Instance entity of the Discovery service. To see the kind of information contained in that entity, send an HTTP GET request to the service for one of your instances.

GET [https://dev.{servername}/api/discovery/v9.0/Instances\(UniqueName=\\'myorg\\'\)](https://dev.{servername}/api/discovery/v9.0/Instances(UniqueName=\\'myorg\\'))

In the above example, the discovery service is used to obtain the organization information of the instance with a unique name of "myorg".

Reference:

<https://docs.microsoft.com/en-in/dynamics365/customerengagement/on-premises/developer/webapi/discover-url-organization-web-api>



<https://docs.microsoft.com/en-us/powerapps/developer/common-data-service/webapi/samples/global-discovery-service-csharp>

QUESTION 5

HOTSPOT

You have the following JavaScript function: (Line numbers are included for reference only.)

```
01 function displayIconTooltip(rowData, userLCID)
02 {
03   var imgName = "";
04   var tooltip = "Relationship Health";
05   var str = JSON.parse(rowData);
06   var prevrev = str.new_previousyearannualrevenue_Value;
07   var rev = str.revenue_Value;
08   var health = parseFloat(rev) - parseFloat(prevrev);
09   if (health > 0)
10     imgName = "new_good";
11   else if (health == 0)
12     imgName = "new_warm";
13   else
14     imgName = "new_bad";
15   var resultarray = [imgName, tooltip];
16   return resultarray;
17 }
```

The Annual Revenue view column is configured to call the function as shown in the Column Properties exhibit. (Click the Change Column Properties tab.)



Change Column Properties ✕

The properties of the selected column are listed below. You can change the width in pixels of the column.

Entity Name: Account

Column Title: Annual Revenue

Data Type: Currency

Name: revenue

Web Resource:

Function Name:

Select a width for this column:

- 25px
- 50px
- 75px
- 100px
- 125px
- 150px
- 200px
- 300px

Users report that the icons that appear in the Active Account view are incorrect, as shown in the Active Accounts View exhibit. (Click the Active Accounts View tab.)

Account Name	Annual Revenue	Address 1: Street	Address 1: City	Address 1: ZIP/Postal Code	Primary Contact	Open Amount
Ac Tellus Suspendisse Foundation	£10,000.00					£0,00
Adipiscing Elit Aliquam Inc.	£15,000.00					£0,00
Adventure Works (sample)	£60,000.00	4495 Balboa Court	Santa Cruz	95486	Nancy Anderson (s...)	£0,00
Aliquet Limited	£8,000.00					£0,00
Aliquet Proin Ltd	£75,000.00					£0,00
Alpine Ski House (sample)	£90,000.00	2313 B Southampton	Missoula	58047	Paul Cannon (sam...)	£30,000.00
Amazon Web Services (AWS)	£5,000.00					£0,00



You need to determine why the incorrect icons are being displayed.

For each of the following statements, select Yes if the statement is true. Otherwise, select No.

Hot Area:

Answer Area

Statements	Yes	No
If the Previous Year Annual Revenue column is in the Active Accounts view but has a null value, the selected imgName is set to new_good for Accounts that have an Annual Revenue greater than 0 .	<input type="radio"/>	<input type="radio"/>
If the Previous Year Annual Revenue column is included in the Active Accounts view, and exception is raised and an error is displayed.	<input type="radio"/>	<input type="radio"/>
The userLCID can be used to gain access to users' Language settings in personal options and change the tooltip to their chosen language.	<input type="radio"/>	<input type="radio"/>
The imgName refers to an image that is a URL to an external image file.	<input type="radio"/>	<input type="radio"/>

Correct Answer:



Answer Area

Statements	Yes	No
If the Previous Year Annual Revenue column is in the Active Accounts view but has a null value, the selected imgName is set to new_good for Accounts that have an Annual Revenue greater than 0.	<input type="radio"/>	<input checked="" type="radio"/>
If the Previous Year Annual Revenue column is included in the Active Accounts view, an exception is raised and an error is displayed.	<input type="radio"/>	<input checked="" type="radio"/>
The userLCID can be used to gain access to users' Language settings in personal options and change the tooltip to their chosen language.	<input checked="" type="radio"/>	<input type="radio"/>
The imgName refers to an image that is a URL to an external image file.	<input checked="" type="radio"/>	<input type="radio"/>

Box 1: No

parseFloat will return `NaN` if it's not a number (null and undefined are NaNs).

Box 2: No Box 3: Yes Session.userLCID is the Locale ID for the ASP application.

Box 4: Yes Reference: <https://support.microsoft.com/en-us/help/229690/how-to-set-the-asp-locale-id-per-the-browser-language-settings>

[MB-400 Practice Test](#)

[MB-400 Study Guide](#)

[MB-400 Braindumps](#)



To Read the [Whole Q&As](#), please purchase the [Complete Version](#) from [Our website](#).

Try our product !

- 100% Guaranteed Success
- 100% Money Back Guarantee
- 365 Days Free Update
- Instant Download After Purchase
- 24x7 Customer Support
- Average 99.9% Success Rate
- More than 800,000 Satisfied Customers Worldwide
- Multi-Platform capabilities - [Windows](#), [Mac](#), [Android](#), [iPhone](#), [iPod](#), [iPad](#), [Kindle](#)

We provide exam PDF and VCE of Cisco, Microsoft, IBM, CompTIA, Oracle and other IT Certifications. You can view Vendor list of All Certification Exams offered:

<https://www.geekcert.com/allproducts>

Need Help

Please provide as much detail as possible so we can best assist you.
To update a previously submitted ticket:



 <p>One Year Free Update Free update is available within One Year after your purchase. After One Year, you will get 50% discounts for updating. And we are proud to boast a 24/7 efficient Customer Support system via Email.</p>	 <p>Money Back Guarantee To ensure that you are spending on quality products, we provide 100% money back guarantee for 30 days from the date of purchase.</p>	 <p>Security & Privacy We respect customer privacy. We use McAfee's security service to provide you with utmost security for your personal information & peace of mind.</p>
---	---	--

Any charges made through this site will appear as Global Simulators Limited.
All trademarks are the property of their respective owners.
Copyright © geekcert, All Rights Reserved.