



MB6-703^{Q&As}

Microsoft Dynamics AX 2012 R3 Trade and Logistics

Pass Microsoft MB6-703 Exam with 100% Guarantee

Free Download Real Questions & Answers **PDF** and **VCE** file from:

<https://www.geekcert.com/mb6-703.html>

100% Passing Guarantee
100% Money Back Assurance

Following Questions and Answers are all new published by Microsoft
Official Exam Center

-  **Instant Download** After Purchase
-  **100% Money Back** Guarantee
-  **365 Days** Free Update
-  **800,000+** Satisfied Customers





QUESTION 1

You need to ensure that a sales order picking list is generated before a sales order packing slip is generated. Which form should you use to perform the configuration?

- A. Item model group
- B. Item group
- C. Sites
- D. Inventory locations

Correct Answer: A

*

Item model groups (form) [AX 2012]

Use this form to create and maintain item model groups. These groups contain settings that determine how items are controlled and handled on item receipts and issues. The settings also determine how the consumption of an item or items is

calculated. A single model group can be associated with many items. Therefore, maintenance is easier, because you can control many items by using the same setup.

*

Settings include:

/ Picking requirements: Select this check box to indicate that item issues must be picked before inventory is physically updated. The status of the inventory transactions for the item issue must be Picked before the packing slip is updated.

Incorrect:

not B: Item group (form) [AX 2012]

Use this form to manage inventory by dividing inventory items into groups based on item characteristics. You can also set up ledger account numbers for the automatic ledger transactions generated for item group receipt and issue

transactions in inventory.

Not C: Sites (form) [AX 2012]

Use this form to create one or more sites.

Not D: Inventory locations (form) [AX 2012]

Use this form to manage inventory locations in a warehouse. You can identify an item's location by the aisle, rack, shelf, and bin coordinates.

QUESTION 2



You are creating a new item model group.

Which three of the following can you configure by using the Item model group form? Each correct answer presents a complete solution.

- A. Whether quality testing is mandatory before accepting Items into Inventory
- B. The ability to sell an item at a discount
- C. The ability to accrue liability on a product receipt
- D. Inventory that can have negative quantities on hand
- E. How transactions will post to the ledger during a financial update

Correct Answer: CDE

C: Accrue liability on product receipt

Select this check box to accrue the estimated expense for packing slip updates to the general ledger.

D: Physical negative inventory

Select this check box to enable negative physical inventory for the item model group.

E: Post financial inventory

Select this check box to post the updated financial value of items in the ledger. When a purchase order is invoice-updated, the value of the items is posted to the inventory receipt account. When a sales order is invoice-updated, the value of the

items is posted to the inventory issue and the consumption accounts. The inventory value that is posted can then be reconciled with the related status accounts in General ledger.

QUESTION 3

You need to track the serial number of the items your company produces. The serial numbers must only be entered during the issue process.

What should you create?

- A. A tracking dimension group that has only the Active setting enabled
- B. A tracking dimension group that has only the Active in sales process setting enabled
- C. A tracking dimension group that has the Active setting enabled and the Blank receipt allowed setting enabled
- D. A tracking dimension group that has the Active in sales process setting enabled and the Blank issue allowed setting enabled

Correct Answer: B

*

The serial number tracking feature is configured for the tracking dimension group setup. You can create a tracking



dimension group by clicking Inventory management -> Product information management -> Tracking dimension groups. You can create a new tracking dimension group and select the "Active in sales process" check box for Serial number. The following image shows an example of this configuration.

*

Blank issue allowed

Select this check box to indicate that the dimension is not specified when physical issues are updated.

The screenshot shows the SAP 'Tracking dimension groups' configuration for a group named 'SellSerial'. The description is 'Serial recorded during Sale only' and 'Capture serial' is set to 'None'. The 'Serial number control' is checked. A table below shows the configuration for various dimension types:

Name	Active	Active in sales process	Primary stocking	Blank receipt allowed	Blank issue allowed	Physical stock
Batch number	<input type="checkbox"/>	<input type="checkbox"/>	<input type="checkbox"/>	<input type="checkbox"/>	<input type="checkbox"/>	<input type="checkbox"/>
Serial number	<input type="checkbox"/>	<input checked="" type="checkbox"/>	<input type="checkbox"/>	<input type="checkbox"/>	<input type="checkbox"/>	<input type="checkbox"/>
Owner	<input type="checkbox"/>	<input type="checkbox"/>	<input type="checkbox"/>	<input type="checkbox"/>	<input type="checkbox"/>	<input type="checkbox"/>
Stock profile	<input type="checkbox"/>	<input type="checkbox"/>	<input checked="" type="checkbox"/>	<input type="checkbox"/>	<input type="checkbox"/>	<input type="checkbox"/>
GTD number	<input type="checkbox"/>	<input type="checkbox"/>	<input type="checkbox"/>	<input type="checkbox"/>	<input type="checkbox"/>	<input type="checkbox"/>

You can choose to tick 'Blank issue allowed' or not. This means that you can define if you require the Serial number to be recorded or if it will be optional.

QUESTION 4

You need to identify the minimum number of warehouses that must exist before you can create a transfer order?

How many should you identify?

- A. 1
- B. 2
- C. 3 D. 4

Correct Answer: B

You use transfer orders to handle items that are in transit between warehouses within the same company, but across different geographical sites. You can manage transfer orders from the Transfer orders form.

The shipping point and the receiving point are always of the Warehouse type.

QUESTION 5

You are setting up a new product.

Which of the following three fields are required to finalize the released product? Each correct answer presents part of the solution.



- A. Product category
- B. Item group
- C. Item sales tax group
- D. Storage Dimension group
- E. Item model group

Correct Answer: BDE

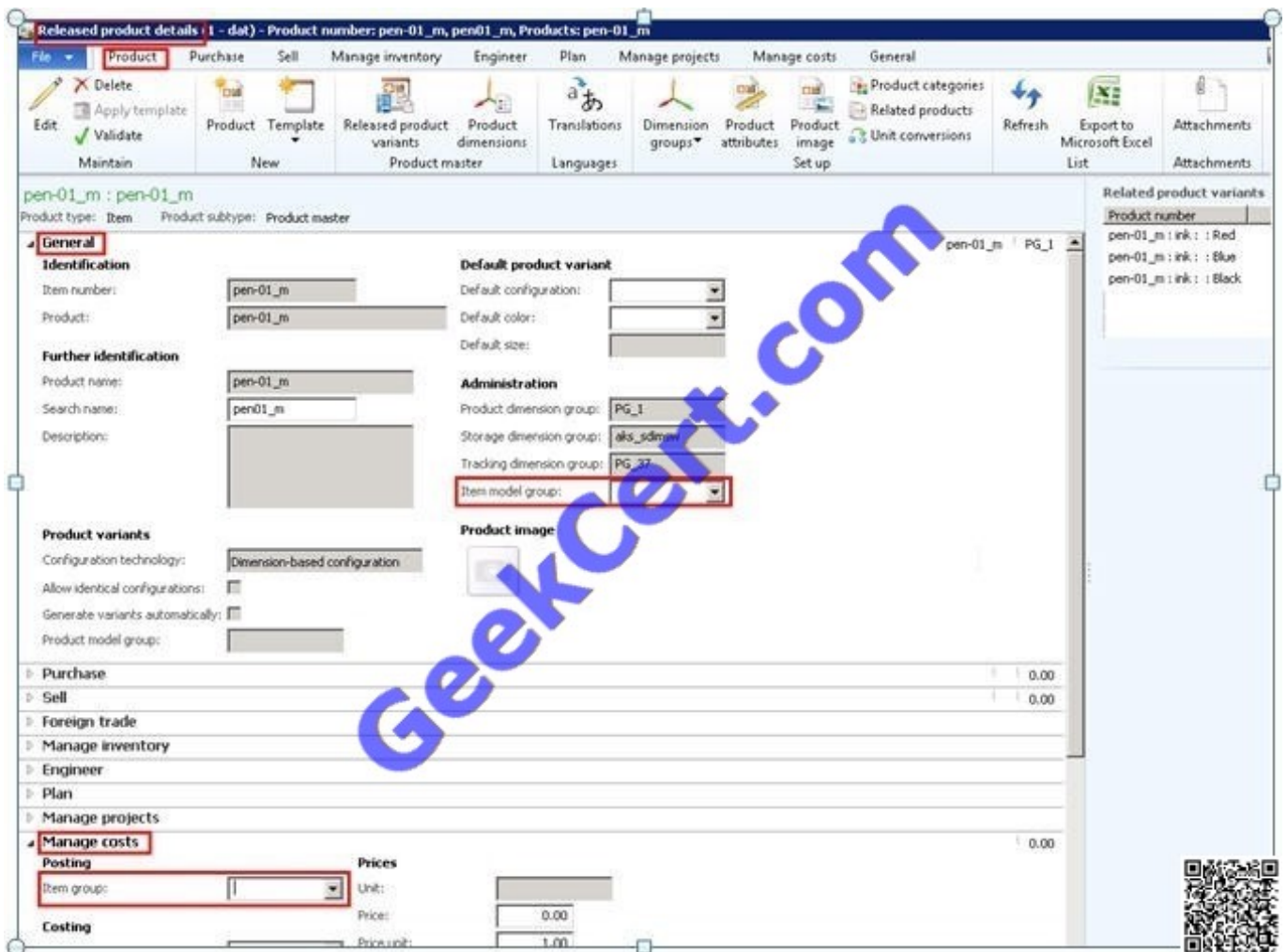
In the Released products form

In the Released product details form, in the General Fast Tab , you will find `Item Model Group` Field From the drop down menu, select an item model group. In the same form , in `Manage costs` tab posting, field you will find `Item Groups`

Field.

From the drop down menu select an Item Group.

Now the item or Product or Product master is ready for further transactions.





[MB6-703 PDF Dumps](#)

[MB6-703 Study Guide](#)

[MB6-703 Exam Questions](#)



To Read the [Whole Q&As](#), please purchase the [Complete Version](#) from [Our website](#).

Try our product !

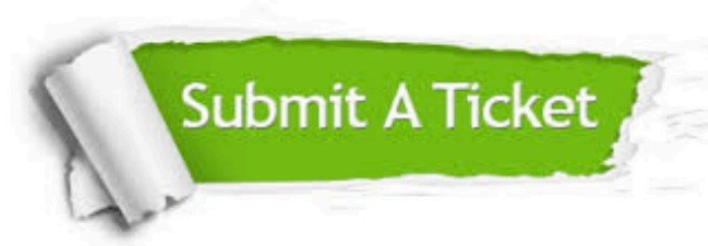
- 100% Guaranteed Success
- 100% Money Back Guarantee
- 365 Days Free Update
- Instant Download After Purchase
- 24x7 Customer Support
- Average 99.9% Success Rate
- More than 800,000 Satisfied Customers Worldwide
- Multi-Platform capabilities - [Windows](#), [Mac](#), [Android](#), [iPhone](#), [iPod](#), [iPad](#), [Kindle](#)

We provide exam PDF and VCE of Cisco, Microsoft, IBM, CompTIA, Oracle and other IT Certifications. You can view Vendor list of All Certification Exams offered:

<https://www.geekcert.com/allproducts>

Need Help

Please provide as much detail as possible so we can best assist you.
To update a previously submitted ticket:



 One Year Free Update <p>Free update is available within One Year after your purchase. After One Year, you will get 50% discounts for updating. And we are proud to boast a 24/7 efficient Customer Support system via Email.</p>	 Money Back Guarantee <p>To ensure that you are spending on quality products, we provide 100% money back guarantee for 30 days from the date of purchase.</p>	 Security & Privacy <p>We respect customer privacy. We use McAfee's security service to provide you with utmost security for your personal information & peace of mind.</p>
---	---	--

Any charges made through this site will appear as Global Simulators Limited.
All trademarks are the property of their respective owners.
Copyright © geekcert, All Rights Reserved.