



# MCD-LEVEL1<sup>Q&As</sup>

MuleSoft Certified Developer - Level 1 (Mule 4)

## Pass Mulesoft MCD-LEVEL1 Exam with 100% Guarantee

Free Download Real Questions & Answers **PDF** and **VCE** file from:

<https://www.geekcert.com/mcd-level1.html>

100% Passing Guarantee  
100% Money Back Assurance

Following Questions and Answers are all new published by Mulesoft  
Official Exam Center

- ⚙️ **Instant Download** After Purchase
- ⚙️ **100% Money Back** Guarantee
- ⚙️ **365 Days** Free Update
- ⚙️ **800,000+** Satisfied Customers





## QUESTION 1

Refer to the exhibits.



```
1 %dw 2.0
2 output application/json
3 ---
4 order: {
5   item: {
6     itemName: payload.item,
7     itemType: payload.itemType,
8     price: payload.price
9   }
10 }
```

The Set Payload transformer In the addItem subflow uses DataWeave to create an order object.

What is the correct DataWeave code for the Set Payload transformer in the createOrder flow to use the addItem subflow to add a router cable with the price of 100 to the order?

- A. addItemf { payload: { price: "100", item: "router", itemType: "cable" } > )
- B. lookupf "addItem", { payload: { price: "100", item: "router", itemType: "cable" } } )
- C. addItemf { price: "100", item: "router", itemType: "cable" } }
- D. lookupf "addItem", { price: "100", item: "router", itemType: "cable" } }

Correct Answer: B

## QUESTION 2

Refer to the exhibits.



```
#%RAML 1.0
title: ACME Airlines
version: 1.0

/flights:
  get:
    responses:
      200:
      404:

  /airline:
    get:
      queryParameters:
        code: string
      responses:
        200:
        404:

/accounts:
  get:
    responses:
      200:
      404:
  post:
    responses:
      201:
```

How many private flows does APIKit generate from RAML specification?

- A. 1
- B. 2
- C. 3



---

D. 4

Correct Answer: D

APIKit Creates a separate flow for each HTTP method. Hence 4 private flows would be generated. MuleSoft Documentation Reference : <https://docs.mulesoft.com/mule-runtime/4.3/build-application-from-api>

---

### QUESTION 3

How are multiple conditions used in a Choice router to route events?

- A. To route the same event to the matched route of EVERY true condition
- B. To find the FIRST true condition, then distribute the event to the ONE matched route.
- C. None of these
- D. To find the FIRST true condition, then route the same event to the matched route and ALL FOLLOWING routes

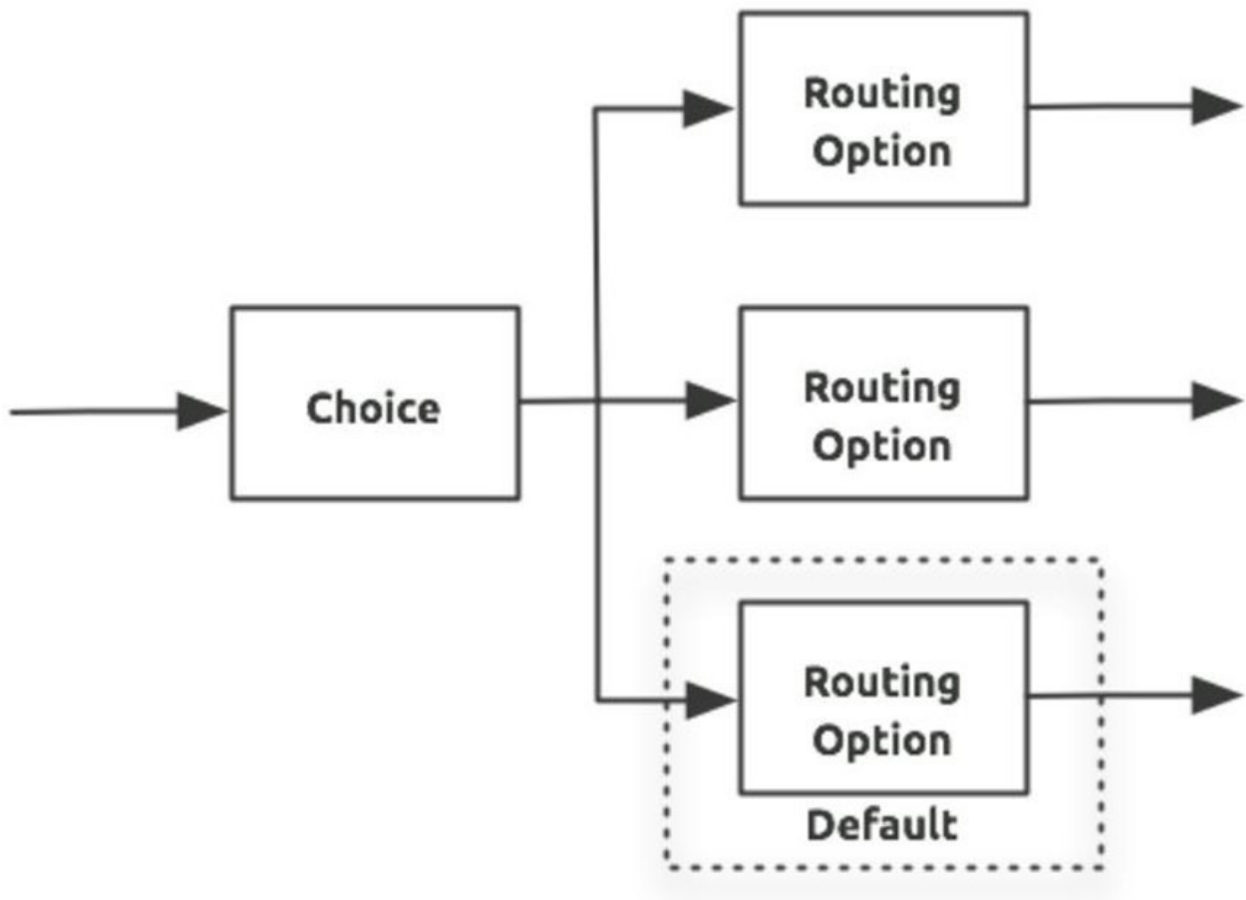
Correct Answer: B

Choice router finds the FIRST true condition, then distribute the event to the ONE matched route.

MuleSoft Doc Ref : <https://docs.mulesoft.com/mule-runtime/4.1/choice-router-concept> The Choice router dynamically routes messages through a flow according to a set of DataWeave expressions that evaluate message content. Each

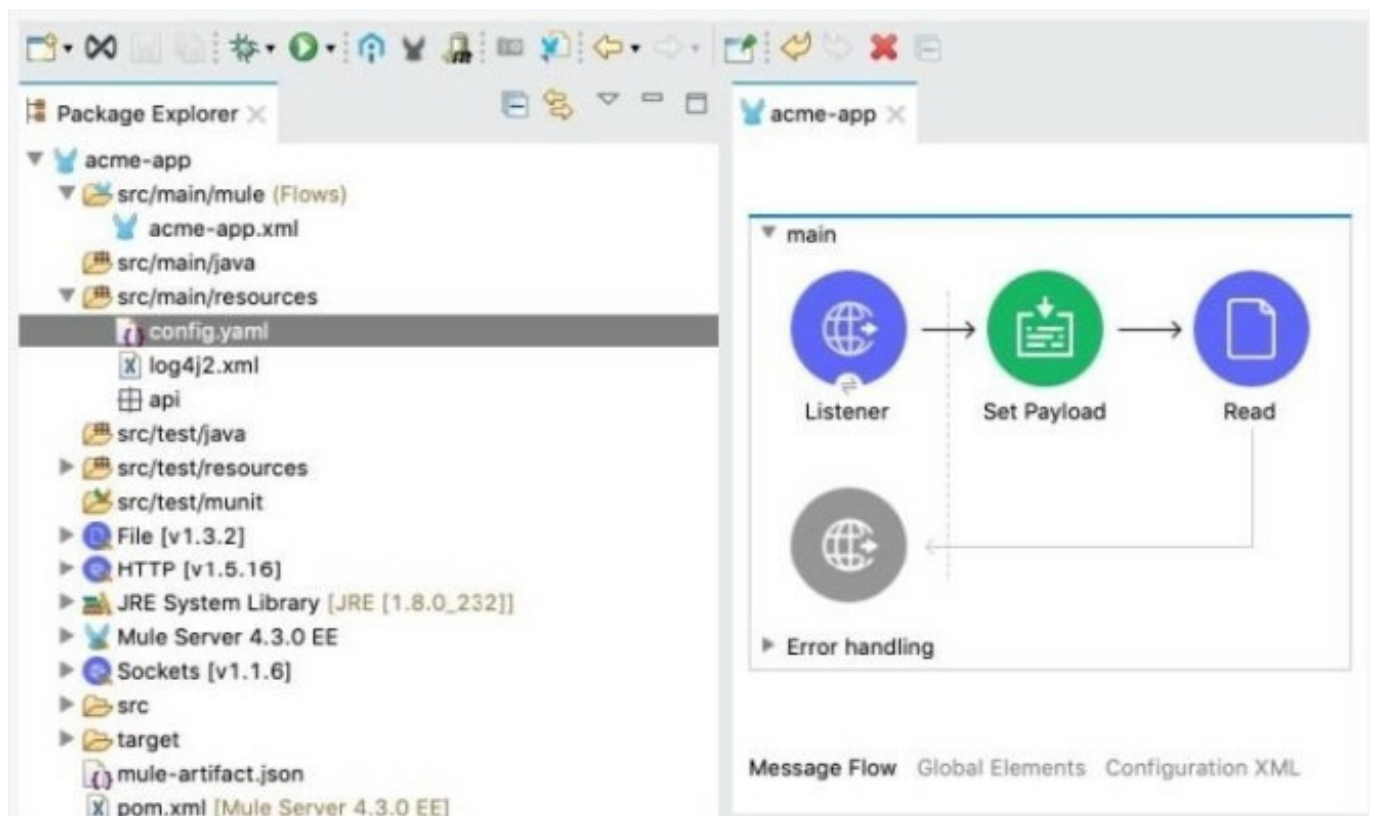
expression is associated with a different routing option. The effect is to add conditional processing to a flow, similar to an if/then/else code block in most programming languages. Only one of the routes in the Choice router executes, meaning

that the first expression that evaluates to true triggers that route's execution and the others are not checked. If none of the expressions are true, then the default route executes.



#### QUESTION 4

Refer to the exhibit.



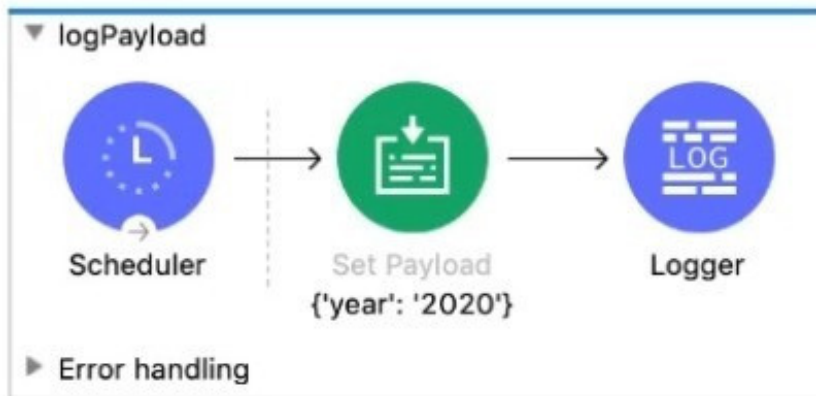
The Mule application's connectors are configured with property placeholders whose values are set in the config.yaml file. What must be added to the Mule application to link the config.yaml file's values with the property placeholders?

- A. A configuration-properties element in the acme-app.xml file
- B. A dependency element in the pom.xml file
- C. A file-config element in the acme-app.xml file
- D. A propertiesFile key/value pair in the mule-artifact.json file

Correct Answer: A

## QUESTION 5

Refer to the exhibits.



```
<flow name="logPayload" >
  <scheduler doc:name="Scheduler" >
    <scheduling-strategy >
      <fixed-frequency />
    </scheduling-strategy>
  </scheduler>
  <set-payload value="#[{'year': '2020'}]" doc:name="{ 'year': '2020' }" />
  <logger level="INFO" doc:name="Logger" message="???" />
</flow>
```

The Set Payload transformer's value is set to `{'year': '2020'}`.

What message value should be added to the Logger component to output the message `The year is 2020`, without hardcoding 2020?

- A. `#[The year is $(payload.year)]`
- B. `The year is #[payload.year]`
- C. `#[The year is " + payload.year]`
- D. `#[The year is "++ payload.year]`

Correct Answer: D

[MCD-LEVEL1 PDF Dumps](#)   [MCD-LEVEL1 Practice Test](#)   [MCD-LEVEL1 Study Guide](#)