



MD-101^{Q&As}

Managing Modern Desktops

Pass Microsoft MD-101 Exam with 100% Guarantee

Free Download Real Questions & Answers **PDF** and **VCE** file from:

<https://www.geekcert.com/md-101.html>

100% Passing Guarantee
100% Money Back Assurance

Following Questions and Answers are all new published by Microsoft
Official Exam Center

-  **Instant Download** After Purchase
-  **100% Money Back** Guarantee
-  **365 Days** Free Update
-  **800,000+** Satisfied Customers





QUESTION 1

Your network contains an Active Directory named contoso.com. The domain contains two computers named Computer1 and Computer2 that run Windows 10.

Folder Redirection is configured for a domain user named User1. The AppData\Roaming folder and the Desktop folder are redirected to a network share.

User1 signs in to Computer1 and performs the following tasks:

1.
Configures screen saver to start after five minutes of inactivity
2.
Modifies the default save location for Microsoft Word
3.
Creates a file named File1.docx on the desktop
4.
Modifies the desktop background

What will be retained when User1 signs in to Computer2?

- A. File1.docx and the desktop background only
- B. File1.docx, the screen saver settings, the desktop background, and the default save location for Word
- C. File1.docx only
- D. File1.docx, the desktop background, and the default save location for Word only

Correct Answer: A

Answer is A for sure!

Desktop background is saved in:

"C:\Users\\AppData\Roaming\Microsoft\Windows\Themes\TranscodedWallpaper".

Your user profile stores your individual settings under Windows. It is used to re-create your preferred system environment when you log on. This includes everything from your wallpaper and desktop, to your email settings and network

connections. A roaming profile is stored on a central server which can be accessed from all domain computers. This allows you to have the same environment settings on every machine to which you log on. Your roaming profile is copied to a

machine when you log on, and the synchronized back to the server when you log off.

On KAPLAN exam - The only difference is that in their question there was not a Desktop background change. In their



official explanation they say that the document in the desktop folder surely is retained. The other settings like screen saver,

default save location for Word, and map a network drive (their option instead of our desktop background) are NOT retained. They explained that the Appdata\Roaming folder stores default templates, some configuration files (like desktop

background, and support data. To redirect everything you would have to use a roaming user profile, not Folder Redirection.

So for this scenario the final answer is A. the file and desktop background.

QUESTION 2

You need to consider the underlined segment to establish whether it is accurate.

To enable sideloading in Windows 10, you should navigate to the For developers setting via Update and Security in the Settings app.

Select "No adjustment required" if the underlined segment is accurate. If the underlined segment is inaccurate, select the accurate option.

- A. No adjustment required.
- B. Windows Insider
- C. Delivery Optimization
- D. Activation

Correct Answer: A

How to allow Windows 10 to sideload apps on your computer

1.

Open Settings.

2.

Click on Update and security.

3.

Click on For developers.

4.

Under "Use developer features," select the Sideload apps option.

Reference:

<https://www.windowcentral.com/how-enable-windows-10-sideload-apps-outside-store> <https://docs.microsoft.com/en-us/windows/application-management/sideload-apps-in-windows-10>

**QUESTION 3**

You have a Microsoft Deployment Toolkit (MDT) deployment share.

You plan to deploy Windows 10 by using the Standard Client Task Sequence template.

You need to modify the task sequence to perform the following actions:

1.

Format disks to support Unified Extensible Firmware Interface (UEFI).

2.

Create a recovery partition.

Which phase of the task sequence should you modify?

A. Initialization

B. Install

C. PostInstall

D. Preinstall

Correct Answer: D

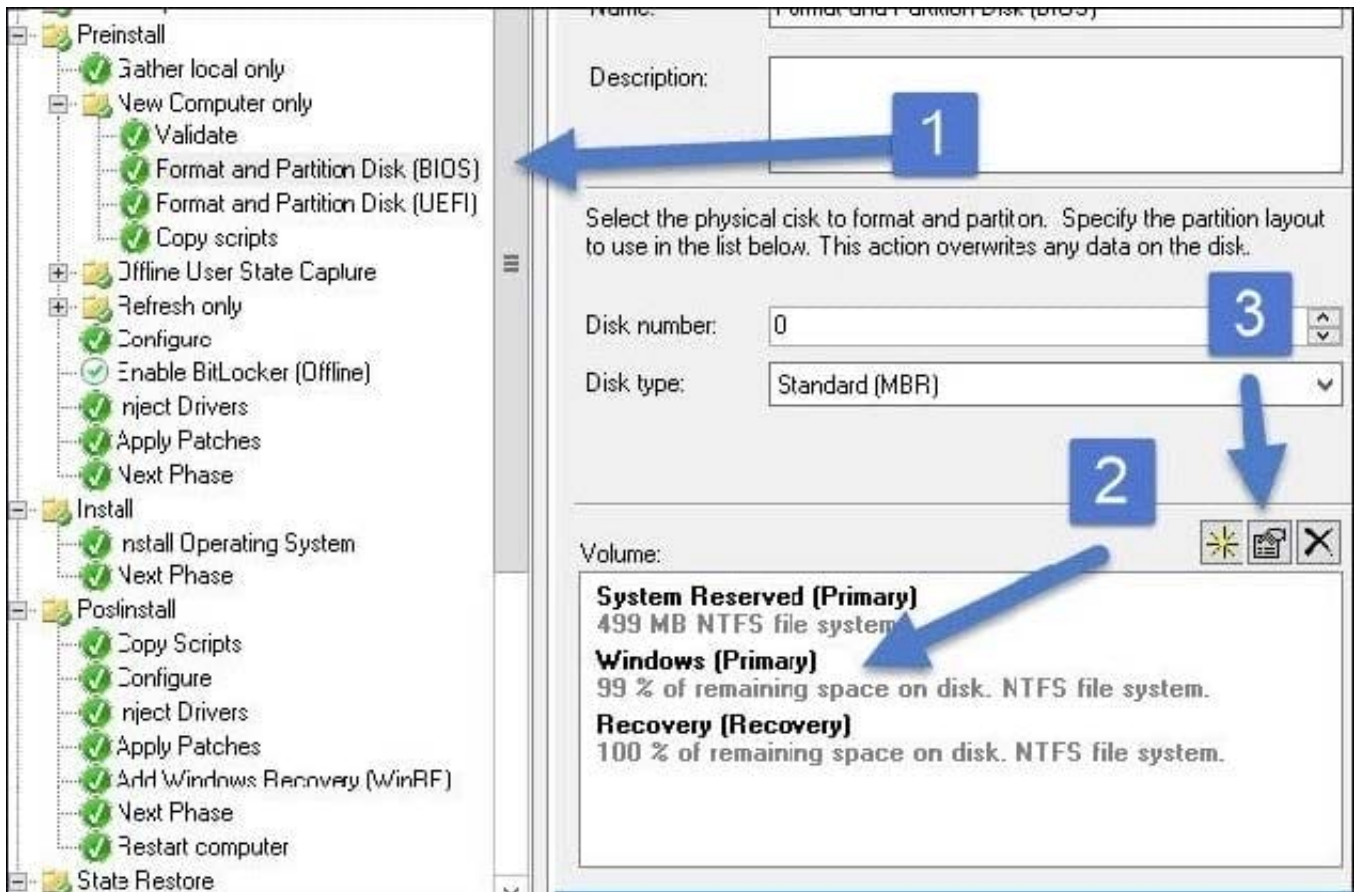
Create Extra Partition in MDT We will create a new task sequence for a machine that doesn't have an extra partition.

1.

On the Select Template page, click the drop-down and select Standard Client Task Sequence. Complete the remaining steps.

2.

Edit the task sequence and click the New Computer only step. Within that step, click Format and Partition Disk(BIOS) step and edit it.



Etc.

Reference:

<https://www.prajwaldesai.com/create-extra-partition-in-mdt/>

QUESTION 4

You have a Microsoft 365 tenant that uses Microsoft Intune.

You use the Company Portal app to access and install published apps to enrolled devices.

From the Microsoft Endpoint Manager admin center, you add a Microsoft Store app.

Which two App information types are visible in the Company Portal?

NOTE: Each correct selection is worth one point.

- A. Information URL
- B. Owner
- C. Privacy URL
- D. Developer



Correct Answer: AC

Information URL: The information URL will be visible to users in Company Portal.

Privacy URL: The privacy URL will be visible to users in Company Portal.

Incorrect answers:

Developer: This information will be visible to people signed into the admin center.

Owner: This name will be visible to people signed in to the admin center.

Reference:

<https://docs.microsoft.com/en-us/mem/intune/apps/store-apps-windows>

QUESTION 5

HOTSPOT

You implement the planned changes for Connection1 and Connection2.

How many VPN connections will there be for User1 when the user signs in to Device1 and Device2? To answer, select the appropriate options in the answer area.

NOTE: Each correct selection is worth one point.

Hot Area:



Device1:

	▼
1	
2	
3	
4	
5	

Device2:

	▼
1	
2	
3	
4	
5	

Correct Answer:



Device1:

	▼
1	
2	
3	
4	
5	

Device2:

	▼
1	
2	
3	
4	
5	

Box 1: 2 Device1 has VPN1 and VPN2.

Box 2: 3 Device2 has VPN1, VPN2 (group assignment), and VPN3

[Latest MD-101 Dumps](#)

[MD-101 Study Guide](#)

[MD-101 Exam Questions](#)