



# NS0-194<sup>Q&As</sup>

NetApp Certified Support Engineer

**Pass NetApp NS0-194 Exam with 100% Guarantee**

Free Download Real Questions & Answers **PDF** and **VCE** file from:

<https://www.geekcert.com/ns0-194.html>

100% Passing Guarantee  
100% Money Back Assurance

Following Questions and Answers are all new published by NetApp  
Official Exam Center

- ⚙️ **Instant Download** After Purchase
- ⚙️ **100% Money Back** Guarantee
- ⚙️ **365 Days** Free Update
- ⚙️ **800,000+** Satisfied Customers



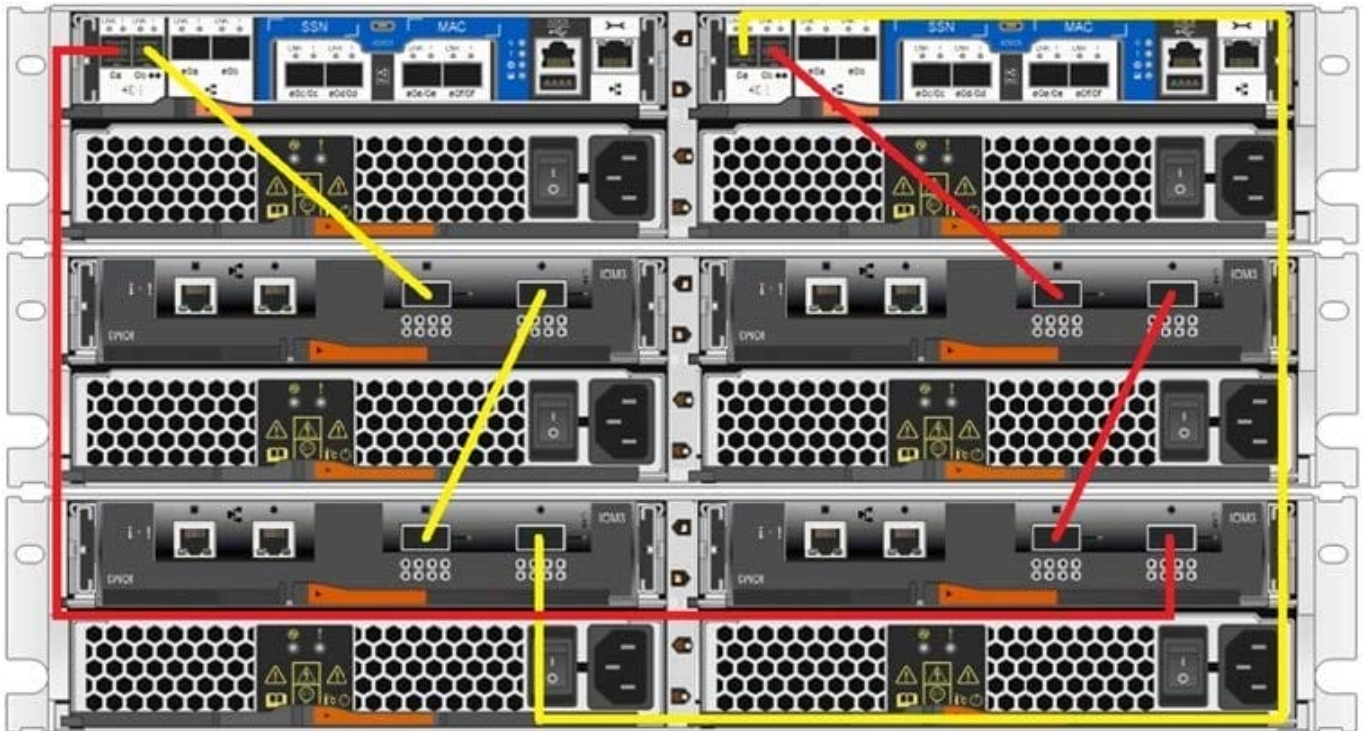


## QUESTION 1

You receive the error shown below on a FAS2750 HA pair.

Mon Jun 24 00:27:30 UTC [NetappA: scsi\_cmdblk\_strthr\_admin: scsi.cmd.checkCondition:error]: Unknown device 0a.00.99: Check Condition: CDB 0x12: Sense Data SCSI:hardware error - (0x4 - 0x44 0x0 0x0) (0).

The system is cabled as shown in the exhibit.



What should you do to clear the error?

- A. Replace the cable connected to controller A's 0a port.
- B. Replace the controller of controller B.
- C. Replace the controller of controller A.
- D. Re-cable the system per the FAS2750 installation guide.

Correct Answer: C Section: (none)

## QUESTION 2

A disaster causes a FlexGroup volume to be unrecoverable, but it was protected by a SnapMirror relationship. You solve the issue, and the source is operational. Now, you want to return to serving the data from the original source.

In this scenario, what do you do next?

- A. Initialize the SnapMirror relationship.



- B. Restore data from a backup copy.
- C. Perform a SnapMirror update.
- D. Delete the SnapMirror relationship.

Correct Answer: A Section: (none)

Reference: <https://docs.netapp.com/ontap-9/index.jsp?topic=%2Fcom.netapp.doc.pow-fg-mgmt%2FGUID576192B0-18B8-40D3-AA3E-FC34415DC4F7.html>

### QUESTION 3

Which CIFS server configuration determines the domain controllers that a CIFS server uses?

- A. site membership
- B. enabled SMB versions
- C. trusted domains
- D. discovery mode

Correct Answer: A Section: (none)

### QUESTION 4

What are two supported cabling methods for a NetApp HCI compute node? (Choose two.)

- A. 1-cable configuration
- B. 2-cable configuration
- C. 6-cable configuration
- D. 4-cable configuration

Correct Answer: BC Section: (none)

Reference: [https://library.netapp.com/ecm/ecm\\_download\\_file/ECMLP2856899](https://library.netapp.com/ecm/ecm_download_file/ECMLP2856899) (11)

### QUESTION 5

How many data-serving SVMs are supported with Cloud Volumes ONTAP that is running ONTAP 9.5?

- A. 128
- B. 1024
- C. 1



D. 10

Correct Answer: C Section: (none)

Reference: [https://docs.netapp.com/us-en/cloud-volumes-ontap/reference\\_limitations\\_95.html](https://docs.netapp.com/us-en/cloud-volumes-ontap/reference_limitations_95.html)

[Latest NS0-194 Dumps](#)

[NS0-194 PDF Dumps](#)

[NS0-194 Study Guide](#)